



MLS 7042717 Commercial

\$4,250,000

11919 Thiesse Road
Brainerd MN 56401

Status: Active

Description:

A rare offering in the world of hospitality and winemaking, Dennis Drummond Wine Co. presents an extraordinary opportunity to acquire an established winery, event destination, and acclaimed brand. The offering includes a sophisticated event center, on-site production facilities, and six internationally awarded wines that have helped define its reputation. Thoughtfully designed for memorable gatherings and seamless operations, the property also features a full-service restaurant with industrial kitchen, an elegant bridal suite, and a private apartment for owner or guest accommodations. Offered as a turnkey enterprise, this is a compelling opportunity to carry forward a celebrated legacy in wine, events, and exceptional hospitality. Transition assistance may be available to support a seamless ownership experience.

Additional Details:

Year Built	2017
Lot Acres	14.1
Lot Dimensions	30x145x270x464x401x369
School District	896
Taxes	\$11,070
Taxes with Assessments	\$11,070
Tax Year	2025

Additional Features:

Fuel: Array **Heat:** Forced Air **Sewer:** Septic System Compliant - Yes **Water:** Well

Driving Directions:

From downtown Brainerd head east on Oak St toward S 6th St, turn right onto MN-25 S, turn right onto Thiesse Rd



Listed By:
Northland Sotheby's International Realty

Affinity Real Estate Inc. participates in the Regional Multiple Listing Service of Minnesota, Inc Broker Reciprocity (sm) program, allowing us to display other broker's listings on our website. All properties are subject to prior sale, change or withdrawal.



Call Affinity Real Estate

218-237-3333

info@affinityrealestate.com



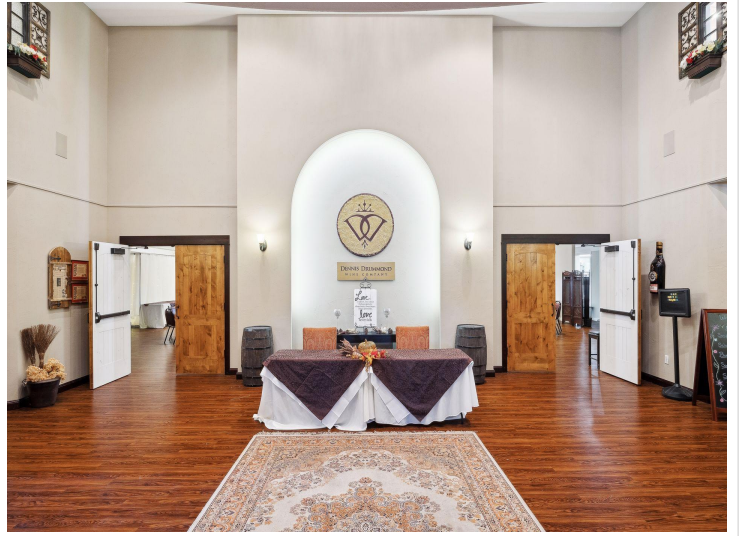
Affinity Real Estate - 600 Park Avenue South - Park Rapids MN 56470



website: www.AffinityRealEstate.com | email: info@affinityrealestate.com | office: 218-237-3333 | fax:218-237-3377



\$4,250,000
MLS 7042717 Commercial
11919 Thiesse Road
Brainerd MN 56401



website: www.AffinityRealEstate.com | email: info@affinityrealestate.com | office: 218-237-3333 | fax: 218-237-3377

Affinity
REAL ESTATE INC

\$4,250,000
MLS 7042717 Commercial
11919 Thiesse Road
Brainerd MN 56401



website: www.AffinityRealEstate.com | email: info@affinityrealestate.com | office: 218-237-3333 | fax:218-237-3377

Affinity
REAL ESTATE INC

\$4,250,000
MLS 7042717 Commercial
11919 Thiesse Road
Brainerd MN 56401



website: www.AffinityRealEstate.com | email: info@affinityrealestate.com | office: 218-237-3333 | fax:218-237-3377

Affinity
REAL ESTATE INC

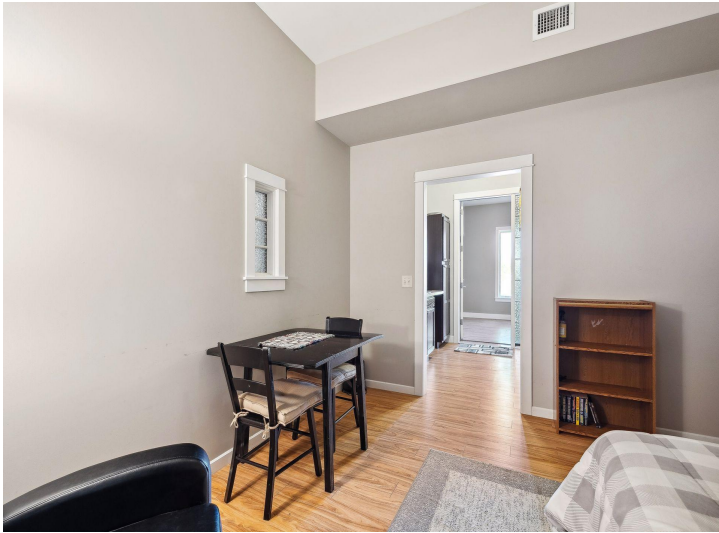
\$4,250,000
MLS 7042717 Commercial
11919 Thiesse Road
Brainerd MN 56401



website: www.AffinityRealEstate.com | email: info@affinityrealestate.com | office: 218-237-3333 | fax:218-237-3377

Affinity
REAL ESTATE INC

\$4,250,000
MLS 7042717 Commercial
11919 Thiesse Road
Brainerd MN 56401



website: www.AffinityRealEstate.com | email: info@affinityrealestate.com | office: 218-237-3333 | fax:218-237-3377

Affinity
REAL ESTATE INC

\$4,250,000
MLS 7042717 Commercial
11919 Thiesse Road
Brainerd MN 56401



website: www.AffinityRealEstate.com | email: info@affinityrealestate.com | office: 218-237-3333 | fax:218-237-3377



\$4,250,000
MLS 7042717 Commercial
11919 Thiesse Road
Brainerd MN 56401



website: www.AffinityRealEstate.com | email: info@affinityrealestate.com | office: 218-237-3333 | fax: 218-237-3377

Affinity
REAL ESTATE INC

\$4,250,000
MLS 7042717 Commercial
11919 Thiesse Road
Brainerd MN 56401



website: www.AffinityRealEstate.com | email: info@affinityrealestate.com | office: 218-237-3333 | fax: 218-237-3377

Affinity
REAL ESTATE INC

\$4,250,000
MLS 7042717 Commercial
11919 Thiesse Road
Brainerd MN 56401



website: www.AffinityRealEstate.com | email: info@affinityrealestate.com | office: 218-237-3333 | fax:218-237-3377



\$4,250,000
MLS 7042717 Commercial
11919 Thiesse Road
Brainerd MN 56401