



MLS 7042762 Land

\$44,900

2.32 Acres
Subdivided

1707 Hassman Hill Tract B Road
Pine River MN 56474

Status: Active

Description:

Tract B is a 2.32 acre level lot with pine trees covering the south two-thirds of the property and ready to have your special home built on it. See supplements for satellite view.

Additional Details:

Lot Acres	2.32
Lot Dimensions	233x423x301x410
School District	1065
Taxes	\$112
Taxes with Assessments	\$112
Tax Year	2025

Additional Features:

Driving Directions:

From Pine River, go south on HWY 371 to right (west) on Hassman Rd .3 mile to property.



Listed By:
RE/MAX Results - Nisswa

Affinity Real Estate Inc. participates in the Regional Multiple Listing Service of Minnesota, Inc Broker Reciprocity (sm) program, allowing us to display other broker's listings on our website. All properties are subject to prior sale, change or withdrawal.



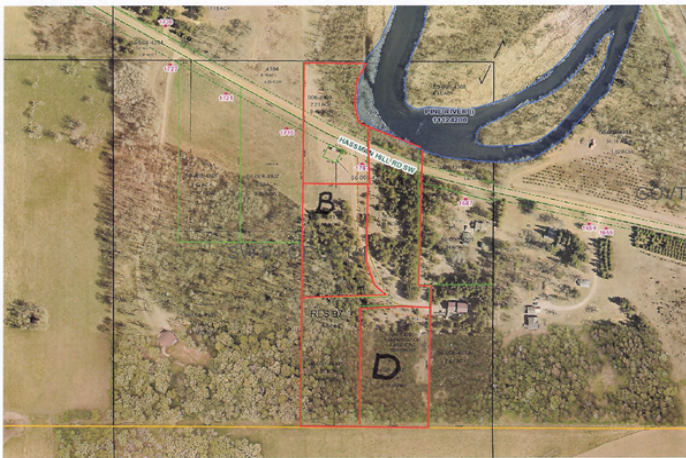
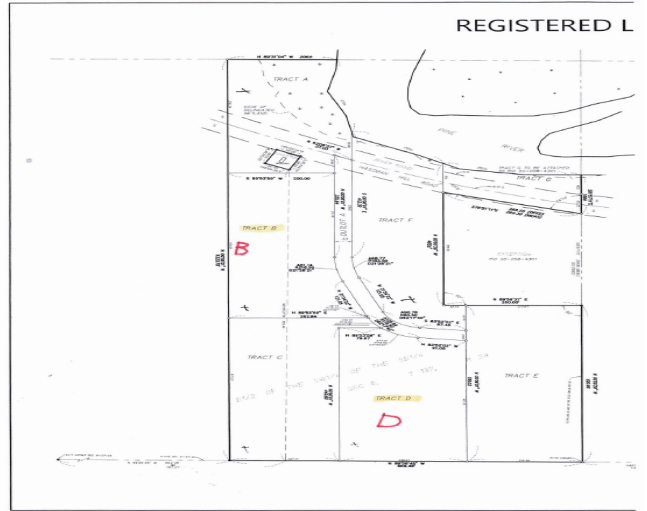
Call Affinity Real Estate

218-237-3333

info@affinityrealestate.com



Affinity Real Estate - 600 Park Avenue South - Park Rapids MN 56470



Hassman Rd TRACT D

These data are provided on an "AS-IS" basis, without warranty of any type, expressed or implied, including but not limited to any warranty as to their performance, MERCHANTABILITY, or fitness for any particular purpose.

This map is not a substitute for accurate field surveys or for locating actual property lines and any adjacent features.

Date: 1/11/2024

website: www.AffinityRealEstate.com | email: info@affinityrealestate.com | office: 218-237-3333 | fax:218-237-3377



\$44,900
 MLS 7042762 Land
 1707 Hassman Hill Tract B
 Road
 Pine River MN 56474

website: www.AffinityRealEstate.com | email: info@affinityrealestate.com | office: 218-237-3333 | fax:218-237-3377



\$44,900
MLS 7042762 Land
1707 Hassman Hill Tract B
Road
Pine River MN 56474