



MLS 7042951 Residential

**\$429,750**

2,570 sq ft  
5 bedrooms  
3 baths

3507 Birchmont Drive  
Bemidji MN 56601

Status: Active

**Description:**

Fantastic 5 bedroom home in a prime Birchmont Drive location! Just minutes from Cameron Park, Bemidji State University, Sanford Hospital, shopping, schools, and bike/walking paths, with views of Lake Bemidji. The exterior features maintenance-free LP SmartSide siding, new windows, and a paved circular driveway. Inside, enjoy a fully refreshed interior with new flooring, paint, and lighting throughout. The updated kitchen showcases custom knotty alder cabinetry, tile backsplash, HDX countertops, and updated appliances. Upstairs offers 3 bedrooms and 2 baths, including a primary suite with a private ¾ bath. The lower level includes 2 additional bedrooms and a second living space. Additional highlights include a new high-efficiency furnace, main floor laundry, half bath, heated tuck-under garage, and stamped concrete patio. City services, natural gas, and all sewer and water assessments paid. Move-in ready with a convenient in-town location.

**Additional Details:**

Year Built	1974
Lot Acres	0.62
Lot Dimensions	100x270
Garage Stalls	2
School District	31
Taxes	\$3,916
Taxes with Assessments	\$3,916
Tax Year	2025

**Additional Features:**

**Basement:** Block, Daylight/Lookout Windows, Egress Window(s), Finished, Full, Storage Space **Fuel:** Array **Garage:** 2 **Heat:** Forced Air, Fireplace(s) **Sewer:** City Sewer/Connected **Water:** City Water/Connected **Air Conditioning:** Central Air

**Driving Directions:**

From BSU take Birchmont DR N about 1 mile home is on (W) side of street



Listed By:  
218 Real Estate

Affinity Real Estate Inc. participates in the Regional Multiple Listing Service of Minnesota, Inc Broker Reciprocity (sm) program, allowing us to display other broker's listings on our website. All properties are subject to prior sale, change or withdrawal.



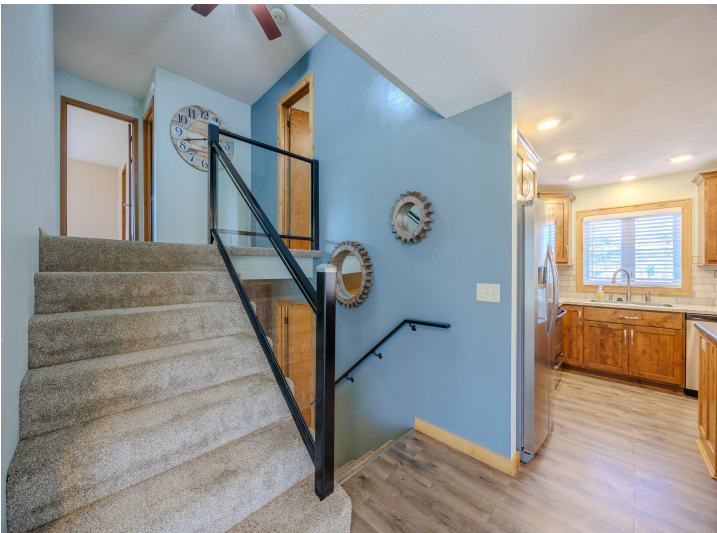
Call Affinity Real Estate

**218-237-3333**

[info@affinityrealestate.com](mailto:info@affinityrealestate.com)



Affinity Real Estate - 600 Park Avenue South - Park Rapids MN 56470



website: [www.AffinityRealEstate.com](http://www.AffinityRealEstate.com) | email: [info@affinityrealestate.com](mailto:info@affinityrealestate.com) | office: 218-237-3333 | fax:218-237-3377

**Affinity**  
REAL ESTATE INC

**\$429,750**  
MLS 7042951 Residential  
3507 Birchmont Drive  
Bemidji MN 56601



website: [www.AffinityRealEstate.com](http://www.AffinityRealEstate.com) | email: [info@affinityrealestate.com](mailto:info@affinityrealestate.com) | office: 218-237-3333 | fax: 218-237-3377



**\$429,750**  
MLS 7042951 Residential  
3507 Birchmont Drive  
Bemidji MN 56601



website: [www.AffinityRealEstate.com](http://www.AffinityRealEstate.com) | email: [info@affinityrealestate.com](mailto:info@affinityrealestate.com) | office: 218-237-3333 | fax:218-237-3377

**Affinity**  
REAL ESTATE INC

**\$429,750**  
MLS 7042951 Residential  
3507 Birchmont Drive  
Bemidji MN 56601



website: [www.AffinityRealEstate.com](http://www.AffinityRealEstate.com) | email: [info@affinityrealestate.com](mailto:info@affinityrealestate.com) | office: 218-237-3333 | fax:218-237-3377



**\$429,750**  
MLS 7042951 Residential  
3507 Birchmont Drive  
Bemidji MN 56601



website: [www.AffinityRealEstate.com](http://www.AffinityRealEstate.com) | email: [info@affinityrealestate.com](mailto:info@affinityrealestate.com) | office: 218-237-3333 | fax:218-237-3377



**\$429,750**  
MLS 7042951 Residential  
3507 Birchmont Drive  
Bemidji MN 56601



website: [www.AffinityRealEstate.com](http://www.AffinityRealEstate.com) | email: [info@affinityrealestate.com](mailto:info@affinityrealestate.com) | office: 218-237-3333 | fax:218-237-3377



**\$429,750**  
MLS 7042951 Residential  
3507 Birchmont Drive  
Bemidji MN 56601



website: [www.AffinityRealEstate.com](http://www.AffinityRealEstate.com) | email: [info@affinityrealestate.com](mailto:info@affinityrealestate.com) | office: 218-237-3333 | fax:218-237-3377

**Affinity**  
REAL ESTATE INC

**\$429,750**  
MLS 7042951 Residential  
3507 Birchmont Drive  
Bemidji MN 56601



website: [www.AffinityRealEstate.com](http://www.AffinityRealEstate.com) | email: [info@affinityrealestate.com](mailto:info@affinityrealestate.com) | office: 218-237-3333 | fax:218-237-3377



**\$429,750**  
MLS 7042951 Residential  
3507 Birchmont Drive  
Bemidji MN 56601



website: [www.AffinityRealEstate.com](http://www.AffinityRealEstate.com) | email: [info@affinityrealestate.com](mailto:info@affinityrealestate.com) | office: 218-237-3333 | fax: 218-237-3377

**Affinity**  
REAL ESTATE INC

**\$429,750**  
MLS 7042951 Residential  
3507 Birchmont Drive  
Bemidji MN 56601



website: [www.AffinityRealEstate.com](http://www.AffinityRealEstate.com) | email: [info@affinityrealestate.com](mailto:info@affinityrealestate.com) | office: 218-237-3333 | fax:218-237-3377



**\$429,750**  
MLS 7042951 Residential  
3507 Birchmont Drive  
Bemidji MN 56601



website: [www.AffinityRealEstate.com](http://www.AffinityRealEstate.com) | email: [info@affinityrealestate.com](mailto:info@affinityrealestate.com) | office: 218-237-3333 | fax:218-237-3377



**\$429,750**  
MLS 7042951 Residential  
3507 Birchmont Drive  
Bemidji MN 56601

website: [www.AffinityRealEstate.com](http://www.AffinityRealEstate.com) | email: [info@affinityrealestate.com](mailto:info@affinityrealestate.com) | office: 218-237-3333 | fax:218-237-3377



**\$429,750**  
MLS 7042951 Residential  
3507 Birchmont Drive  
Bemidji MN 56601