



MLS 7043633 Residential

\$349,900

1,468 sq ft
2 bedrooms
2 baths

291 Silo Heights Drive
Wadena MN 56482

Status: Active

Description:

This home is a must see! Inside, the home features beautiful cabinetry, granite countertops, hardwood floors, and a large open kitchen and living area. The sunroom adds additional living space and is a standout feature of the home. Wait until you see it! The primary suite includes a walk-in shower, and the convenience of one-level living provides both comfort and functionality. There is a heated, attached 2-stall garage, along with an attached utility garage offering additional heated storage and a finished bonus space currently used as an office and home gym. Outside, the home sits on a +/- 1.19 acre lot with golf course views. The front deck offers a great space to enjoy quiet mornings, while the back patio features a gazebo and wood-burning fireplace, great for those cooler summer nights. Recent updates include new siding, soffit, fascia, gutters, and shingles in 2025. This home is move-in ready.

Additional Details:

Year Built	2003
Lot Acres	1.19
Lot Dimensions	Irregular
Garage Stalls	3
School District	1053
Taxes	\$3,344
Taxes with Assessments	\$3,414
Tax Year	2025

Additional Features:

Basement: None **Fuel:** Array **Garage:** 3 **Heat:** Forced Air, Fireplace(s), In-Floor Heating **Sewer:** Mound Septic **Water:** Drilled **Air Conditioning:** Central Air

Driving Directions:

From Wadena take 71 North, turn right onto Leaf River Road, turn right onto Silo Heights Dr, Property is on the left.



Listed By:
Premier Realty Group

Affinity Real Estate Inc. participates in the Regional Multiple Listing Service of Minnesota, Inc Broker Reciprocity (sm) program, allowing us to display other broker's listings on our website. All properties are subject to prior sale, change or withdrawal.



Call Affinity Real Estate

218-237-3333

info@affinityrealestate.com



Affinity Real Estate - 600 Park Avenue South - Park Rapids MN 56470



website: www.AffinityRealEstate.com | email: info@affinityrealestate.com | office: 218-237-3333 | fax:218-237-3377

Affinity
REAL ESTATE INC

\$349,900
MLS 7043633 Residential
291 Silo Heights Drive
Wadena MN 56482



website: www.AffinityRealEstate.com | email: info@affinityrealestate.com | office: 218-237-3333 | fax: 218-237-3377

Affinity
REAL ESTATE INC

\$349,900
MLS 7043633 Residential
291 Silo Heights Drive
Wadena MN 56482



website: www.AffinityRealEstate.com | email: info@affinityrealestate.com | office: 218-237-3333 | fax: 218-237-3377

Affinity
REAL ESTATE INC

\$349,900
MLS 7043633 Residential
291 Silo Heights Drive
Wadena MN 56482



website: www.AffinityRealEstate.com | email: info@affinityrealestate.com | office: 218-237-3333 | fax:218-237-3377

Affinity
REAL ESTATE INC

\$349,900
MLS 7043633 Residential
291 Silo Heights Drive
Wadena MN 56482



website: www.AffinityRealEstate.com | email: info@affinityrealestate.com | office: 218-237-3333 | fax: 218-237-3377

Affinity
REAL ESTATE INC

\$349,900
MLS 7043633 Residential
291 Silo Heights Drive
Wadena MN 56482



website: www.AffinityRealEstate.com | email: info@affinityrealestate.com | office: 218-237-3333 | fax:218-237-3377

Affinity
REAL ESTATE INC

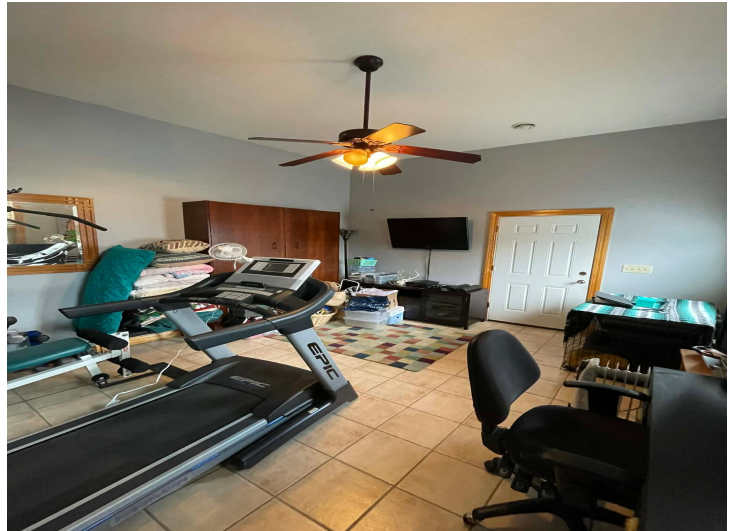
\$349,900
MLS 7043633 Residential
291 Silo Heights Drive
Wadena MN 56482



website: www.AffinityRealEstate.com | email: info@affinityrealestate.com | office: 218-237-3333 | fax:218-237-3377

Affinity
REAL ESTATE INC

\$349,900
MLS 7043633 Residential
291 Silo Heights Drive
Wadena MN 56482



website: www.AffinityRealEstate.com | email: info@affinityrealestate.com | office: 218-237-3333 | fax: 218-237-3377

Affinity
REAL ESTATE INC

\$349,900
MLS 7043633 Residential
291 Silo Heights Drive
Wadena MN 56482



website: www.AffinityRealEstate.com | email: info@affinityrealestate.com | office: 218-237-3333 | fax:218-237-3377

Affinity
REAL ESTATE INC

\$349,900
MLS 7043633 Residential
291 Silo Heights Drive
Wadena MN 56482



website: www.AffinityRealEstate.com | email: info@affinityrealestate.com | office: 218-237-3333 | fax:218-237-3377



\$349,900
MLS 7043633 Residential
291 Silo Heights Drive
Wadena MN 56482