



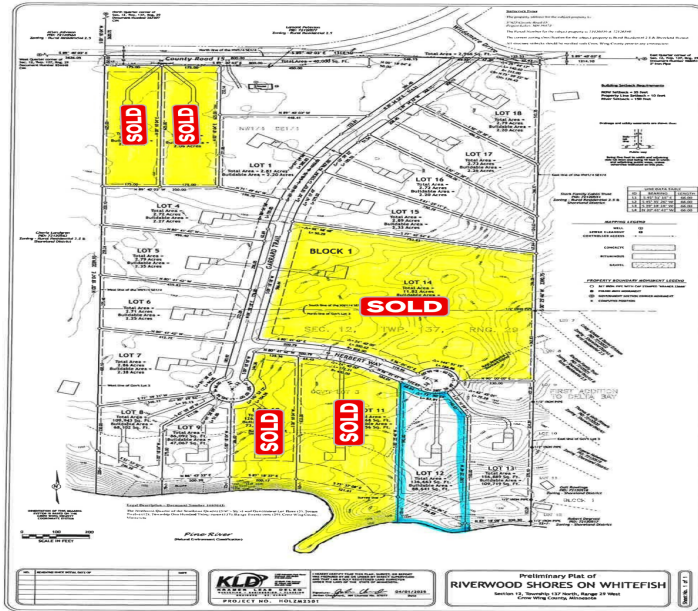
MLS 7043687 Land

\$695,000

3.14 Acres
Finished Lot(s)

Lot xx12 Wildamere Drive
Pine River MN 56474

Status: Coming Soon



Description:

It doesn't get better than this! Nature calls in this newly developed residential neighborhood, just minutes from the Whitefish Chain and all the recreation, dining, and charm the Lakes Area has to offer. This beautifully wooded 3.14-acre lot sits at the end of a quiet cul-de-sac and features almost 240 feet of shoreline along the Pine River. Offering both privacy and natural beauty, it provides an ideal setting for your new home—along with close and easy boating access to Upper Whitefish Lakes and the entire Whitefish Chain. Nearby communities including Pequot Lakes, Crosslake, and Pine River are all within close reach, offering additional amenities and year-round activities. An adjacent lot is also available (see MLS #7043638), presenting a unique opportunity for expanded space or future investment. Take a drive through Riverwood Shores on Whitefish and discover the potential of this exceptional property for yourself.

Additional Details:

Lot Acres	3.14
Lot Dimensions	592x224x550x240
School District	1065
Taxes	(unreported)
Taxes with Assessments	(unreported)
Tax Year	2025

Additional Features:

Driving Directions:

On CR-15 going East, turn right on Wildamere Drive (Heaths Resort), then right again on new road to lot. See development sign and lot number signs.



Listed By:
Dane Arthur Real Estate Agency-Crosslake

Affinity Real Estate Inc. participates in the Regional Multiple Listing Service of Minnesota, Inc Broker Reciprocity (sm) program, allowing us to display other broker's listings on our website. All properties are subject to prior sale, change or withdrawal.



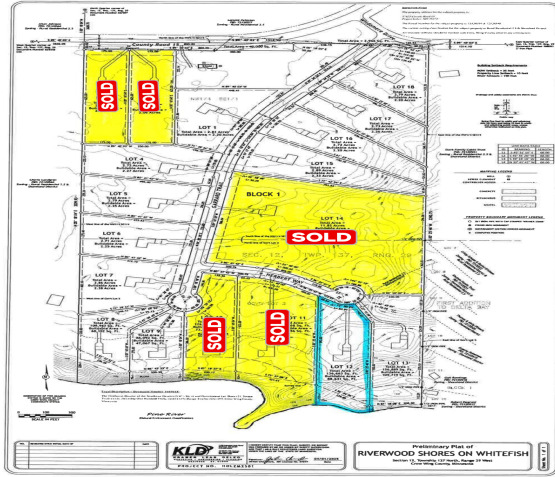
Call Affinity Real Estate

218-237-3333

info@affinityrealestate.com



Affinity Real Estate - 600 Park Avenue South - Park Rapids MN 56470



website: www.AffinityRealEstate.com | email: info@affinityrealestate.com | office: 218-237-3333 | fax:218-237-3377



\$695,000
 MLS 7043687 Land
 Lot xx12 Wildamere Drive
 Pine River MN 56474



website: www.AffinityRealEstate.com | email: info@affinityrealestate.com | office: 218-237-3333 | fax:218-237-3377



\$695,000
MLS 7043687 Land
Lot xx12 Wildamere Drive
Pine River MN 56474



website: www.AffinityRealEstate.com | email: info@affinityrealestate.com | office: 218-237-3333 | fax:218-237-3377



\$695,000
MLS 7043687 Land
Lot xx12 Wildamere Drive
Pine River MN 56474