



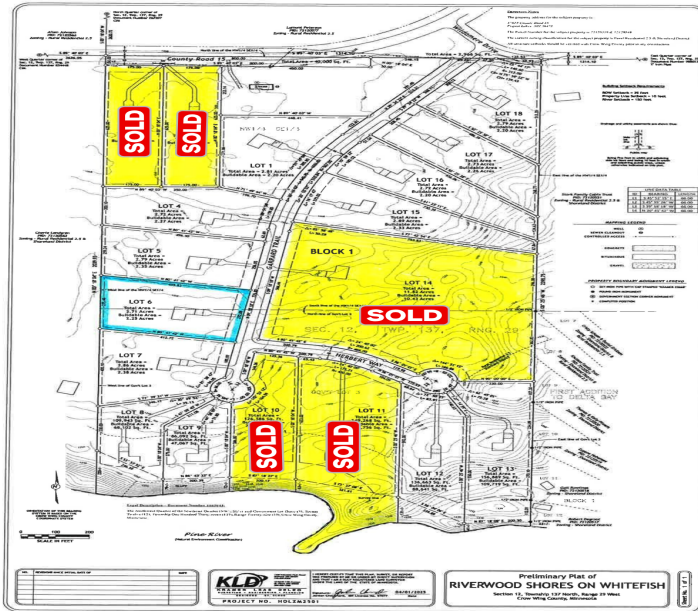
MLS 7043694 Land

\$89,000

2.71 Acres
Finished Lot(s)

Lot xx6 Wildamere Drive
Pine River MN 56474

Status: Coming Soon



Description:

Discover the perfect blend of privacy, natural beauty, and convenience in this newly developed residential neighborhood. Nestled among mature trees, this stunning wooded lot offers an ideal setting to build your dream home, with ample space to create your own peaceful retreat. Located just minutes from the Whitefish Chain public boat launch, you'll enjoy easy access to premier boating, fishing, and outdoor recreation. The surrounding Lakes Area is known for its vibrant mix of dining, shopping, and year-round activities, giving you the best of both relaxation and adventure. Nearby communities such as Pequot Lakes, Crosslake, and Pine River are all within a short drive, offering additional amenities and small-town charm. Whether you're looking to build now or invest for the future, additional lots are available—providing a unique opportunity to expand your space or secure multiple properties. Take a drive through Riverwood Shores on Whitefish and experience the beauty and potential of this exceptional property for yourself.

Additional Details:

Lot Acres	2.71
Lot Dimensions	456x272x413x275
School District	1065
Taxes	(unreported)
Taxes with Assessments	(unreported)
Tax Year	2025

Additional Features:

Driving Directions:

On CR-15 going East, turn right on Wildamere Drive (Heaths Resort), then right again on new road to lot. See development sign and lot number signs.



Listed By:
Dane Arthur Real Estate Agency-Crosslake

Affinity Real Estate Inc. participates in the Regional Multiple Listing Service of Minnesota, Inc Broker Reciprocity (sm) program, allowing us to display other broker's listings on our website. All properties are subject to prior sale, change or withdrawal.



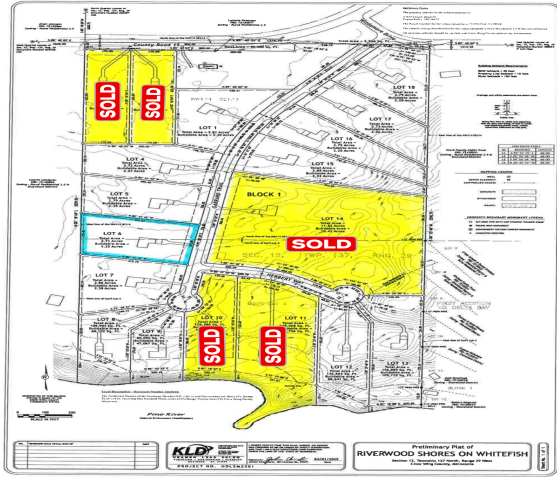
Call Affinity Real Estate

218-237-3333

info@affinityrealestate.com



Affinity Real Estate - 600 Park Avenue South - Park Rapids MN 56470



website: www.AffinityRealEstate.com | email: info@affinityrealestate.com | office: 218-237-3333 | fax: 218-237-3377



\$89,000
MLS 7043694 Land
Lot xx6 Wildamere Drive
Pine River MN 56474



website: www.AffinityRealEstate.com | email: info@affinityrealestate.com | office: 218-237-3333 | fax:218-237-3377



\$89,000
MLS 7043694 Land
Lot xx6 Wildamere Drive
Pine River MN 56474



website: www.AffinityRealEstate.com | email: info@affinityrealestate.com | office: 218-237-3333 | fax:218-237-3377



\$89,000
MLS 7043694 Land
Lot xx6 Wildamere Drive
Pine River MN 56474