

MLS 7043901 Land

\$120,000

10.04 Acres
Raw Land

Lot G Matson Road
Frazee MN 56544

Status: Pending

Description:

NO COVENANTS – 10.04 Acres | Your Dream Property Awaits. Discover the freedom and possibilities on this stunning 10.04-acre parcel with no covenants or restrictions. Whether you're looking to build your dream home, create a private getaway, start a hobby farm, or invest in land, this property offers endless potential.


Additional Details:

Lot Acres	10.04
Lot Dimensions	irr
School District	1106
Taxes	\$999
Taxes with Assessments	\$999
Tax Year	2025

Additional Features:

Driving Directions:

Hwy 10 East to Co Hwy 54, 2.6 miles turn right onto Matson Road. Watch for signs.

 Listed By:
REMAX Lakes Region

Affinity Real Estate Inc. participates in the Regional Multiple Listing Service of Minnesota, Inc Broker Reciprocity (sm) program, allowing us to display other broker's listings on our website. All properties are subject to prior sale, change or withdrawal.

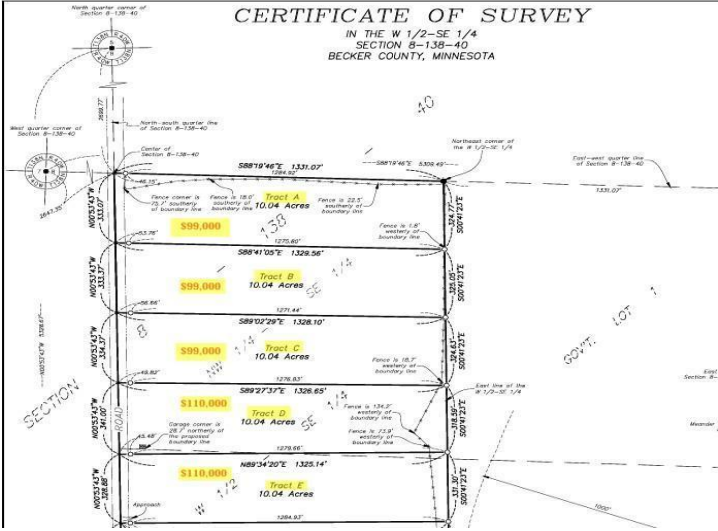


Call Affinity Real Estate
218-237-3333
info@affinityrealestate.com



Affinity Real Estate - 600 Park Avenue South - Park Rapids MN 56470

CERTIFICATE OF SURVEY
 IN THE W 1/2-SE 1/4
 SECTION 8-138-40
 BECKER COUNTY, MINNESOTA



website: www.AffinityRealEstate.com | email: info@affinityrealestate.com | office: 218-237-3333 | fax:218-237-3377



\$120,000
 MLS 7043901 Land
 Lot G Matson Road
 Frazee MN 56544