



MLS 7043924 Residential

\$825,000

4,427 sq ft
5 bedrooms
5 baths

50164 County 29
Bemidji MN 56601

Status: Active

Description:

Beautiful, spacious, custom built home nestled in the pines just south of Bemidji. Over 6 wooded acres and 110' of frontage on Lake Plantagenet. Feels secluded but it's conveniently located off a paved road. This listing consists of 3 parcels...the home is on the north two parcels and the adjoining lot to the south accesses the lake. The home features a great room with lots of windows, vaulted ceiling, and a two-sided fireplace (propane) with a spectacular faux stone chimney. The kitchen has quality Hickory raised panel door cabinets, there's some hardwood flooring throughout the house and pine v-joint paneling accentuating some walls and ceilings. The interior is thoughtfully laid out with main floor laundry and a nice flow to things. It has huge bedrooms (2 have ensuite full bathrooms!) and a finished walk-out basement with a large family/rec room. The driveway is paved and there's a detached 30x30 heated shop with office built in. The attached double garage is also heated.

The home has central A/C, a propane furnace and off peak electric plenum heat as well as slab heat to keep it's inhabitants comfortable in all seasons. With plenty of insulation and good quality windows, you feel like you're inside a well appointed vault...with great views. If space and privacy is what you need, this is the place for you! The home is also listed without the lake lot for \$625k on MLS# 7004459. (Note: the home was originally built with 3 bedrooms so the septic system is sized for 3 bedrooms.)

Additional Details:

Year Built	2005
Lot Acres	6.16
Lot Dimensions	344x420 & 75x200 & 110x1050(approx)
Garage Stalls	3
School District	1386
Taxes	\$5,524
Taxes with Assessments	\$5,524
Tax Year	2026

Additional Features:

Basement: Block, Finished, Full, Walkout **Fuel:** Array **Garage:** 3 **Heat:** Forced Air, In-Floor Heating **Sewer:** Private Sewer **Water:** 4-Inch Submersible, Private **Air Conditioning:** Central Air

Listed By:
Headwaters Realty Services LLC
50164 County 29, #50164 is on the left.
Jct on Beltrami Line Rd/N Plantagenet Rd SW,
Affinity Real Estate Inc. participates in the Regional Multiple Listing Service of Minnesota, Inc Broker Reciprocity (sm) program, allowing us to display other broker's listings on our website. All properties are subject to prior sale, change or withdrawal.



Call Affinity Real Estate

218-237-3333

info@affinityrealestate.com



Affinity Real Estate - 600 Park Avenue South - Park Rapids MN 56470



website: www.AffinityRealEstate.com | email: info@affinityrealestate.com | office: 218-237-3333 | fax:218-237-3377

Affinity
REAL ESTATE INC

\$825,000
MLS 7043924 Residential
50164 County 29
Bemidji MN 56601



website: www.AffinityRealEstate.com | email: info@affinityrealestate.com | office: 218-237-3333 | fax:218-237-3377



\$825,000
MLS 7043924 Residential
50164 County 29
Bemidji MN 56601



website: www.AffinityRealEstate.com | email: info@affinityrealestate.com | office: 218-237-3333 | fax: 218-237-3377

Affinity
REAL ESTATE INC

\$825,000
MLS 7043924 Residential
50164 County 29
Bemidji MN 56601



website: www.AffinityRealEstate.com | email: info@affinityrealestate.com | office: 218-237-3333 | fax:218-237-3377

Affinity
REAL ESTATE INC

\$825,000
MLS 7043924 Residential
50164 County 29
Bemidji MN 56601



website: www.AffinityRealEstate.com | email: info@affinityrealestate.com | office: 218-237-3333 | fax: 218-237-3377

Affinity
REAL ESTATE INC

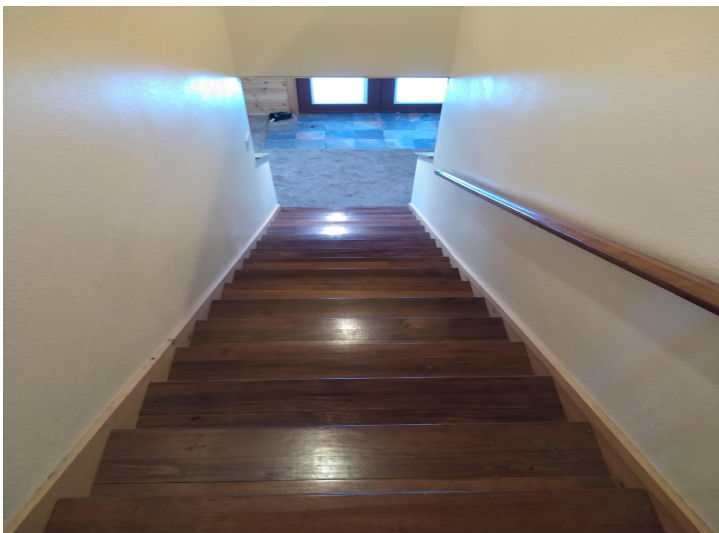
\$825,000
MLS 7043924 Residential
50164 County 29
Bemidji MN 56601



website: www.AffinityRealEstate.com | email: info@affinityrealestate.com | office: 218-237-3333 | fax: 218-237-3377

Affinity
REAL ESTATE INC

\$825,000
MLS 7043924 Residential
50164 County 29
Bemidji MN 56601



website: www.AffinityRealEstate.com | email: info@affinityrealestate.com | office: 218-237-3333 | fax:218-237-3377

Affinity
REAL ESTATE INC

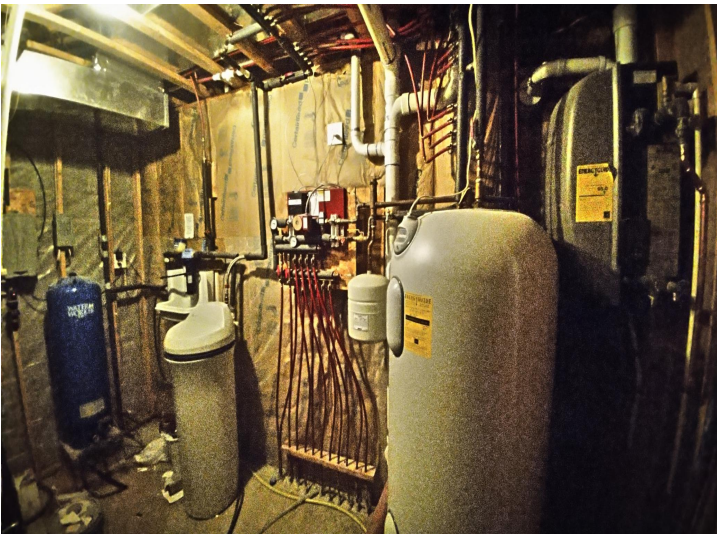
\$825,000
MLS 7043924 Residential
50164 County 29
Bemidji MN 56601



website: www.AffinityRealEstate.com | email: info@affinityrealestate.com | office: 218-237-3333 | fax:218-237-3377

Affinity
REAL ESTATE INC

\$825,000
MLS 7043924 Residential
50164 County 29
Bemidji MN 56601



website: www.AffinityRealEstate.com | email: info@affinityrealestate.com | office: 218-237-3333 | fax: 218-237-3377

Affinity
REAL ESTATE INC

\$825,000
MLS 7043924 Residential
50164 County 29
Bemidji MN 56601



website: www.AffinityRealEstate.com | email: info@affinityrealestate.com | office: 218-237-3333 | fax:218-237-3377



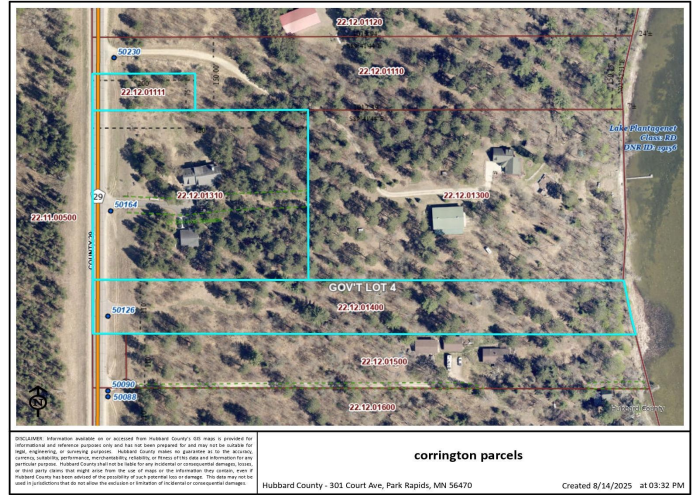
\$825,000
MLS 7043924 Residential
50164 County 29
Bemidji MN 56601



website: www.AffinityRealEstate.com | email: info@affinityrealestate.com | office: 218-237-3333 | fax:218-237-3377

Affinity
REAL ESTATE INC

\$825,000
MLS 7043924 Residential
50164 County 29
Bemidji MN 56601



website: www.AffinityRealEstate.com | email: info@affinityrealestate.com | office: 218-237-3333 | fax: 218-237-3377



\$825,000
 MLS 7043924 Residential
 50164 County 29
 Bemidji MN 56601