



MLS 7044229 Lake Land

\$20,000

Description:

Triple lot available in Dellwood Acres North of Breezy Point. Nice corner lot just off the highway. 0.66 Acres in total, this lot offers the ability to build your dreams. Optional association with Dellwood Acres HOA, would give you access to Lake Ossawinnamakee.

Additional Details:

Lot Acres	0.66
Lot Dimensions	206x140
School District	186
Taxes	\$150
Taxes with Assessments	\$150
Tax Year	2025

Additional Features:

Driving Directions:

From Breezy Point Gates, left on County Road 11 to left on East Street, left on 1st Avenue to lots will be on the right.



Listed By:
Exit Realty Hometown Advantage

Affinity Real Estate Inc. participates in the Regional Multiple Listing Service of Minnesota, Inc Broker Reciprocity (sm) program, allowing us to display other broker's listings on our website. All properties are subject to prior sale, change or withdrawal.



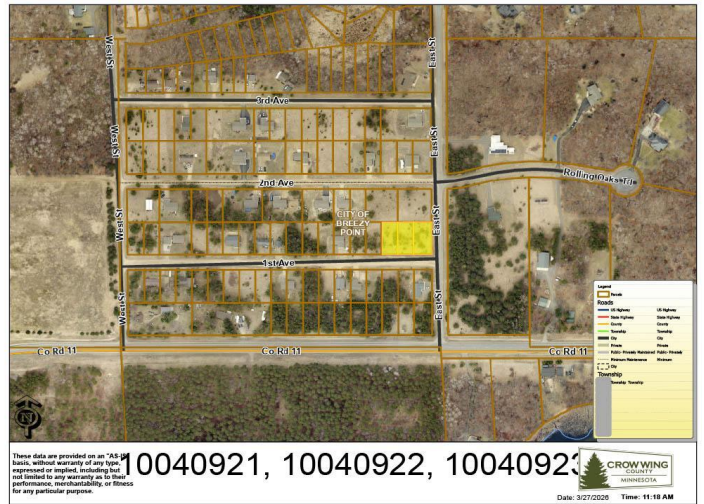
Call Affinity Real Estate

218-237-3333

info@affinityrealestate.com



Affinity Real Estate - 600 Park Avenue South - Park Rapids MN 56470



website: www.AffinityRealEstate.com | email: info@affinityrealestate.com | office: 218-237-3333 | fax:218-237-3377



\$20,000
MLS 7044229 Lake Land
TBD East St
Breezy Point MN 56472