



MLS 7044343 Land

**\$37,000**

0.22 Acres  
Subdivided

TBD Lot 5 Beartooth Avenue  
Bemidji MN 56601

Status: Active

**Description:**

Welcome to the community, Mountain View Meadows located in the city limits of Bemidji, south end of town. City water and sewer available. Purchase lot #5 or pick from others. Look forward to an equipped play area for children, soccer or snowboarding, biking or hiking paths, there will be plenty to enjoy. Drive through and preview this lovely neighborhood and build your dream home. Call for details.

**Additional Details:**

|                        |                |
|------------------------|----------------|
| Lot Acres              | 0.22           |
| Lot Dimensions         | 70x120x100x105 |
| School District        | 1386           |
| Taxes                  | \$296          |
| Taxes with Assessments | \$296          |
| Tax Year               | 2025           |

**Additional Features:**

**Driving Directions:**

South on Washington Ave S to Shedhorn St SW. Right on Shedhorn St SW to Beartooth Ave SW. Lot on the right.



Listed By:  
Better Homes and Gardens Real Estate First Cho

Affinity Real Estate Inc. participates in the Regional Multiple Listing Service of Minnesota, Inc Broker Reciprocity (sm) program, allowing us to display other broker's listings on our website. All properties are subject to prior sale, change or withdrawal.



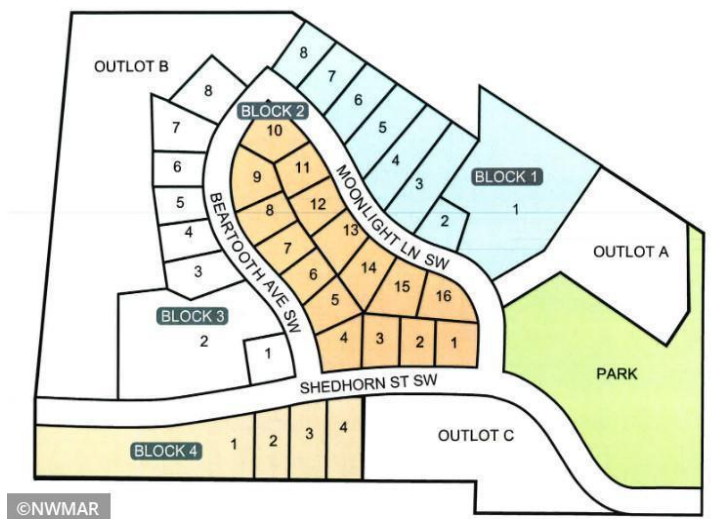
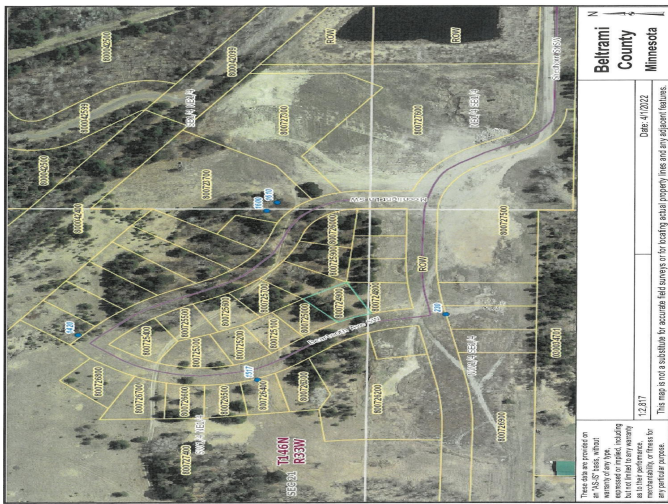
**Call Affinity Real Estate**

**218-237-3333**

**info@affinityrealestate.com**



**Affinity Real Estate - 600 Park Avenue South - Park Rapids MN 56470**



website: [www.AffinityRealEstate.com](http://www.AffinityRealEstate.com) | email: [info@affinityrealestate.com](mailto:info@affinityrealestate.com) | office: 218-237-3333 | fax:218-237-3377



**\$37,000**  
 MLS 7044343 Land  
 TBD Lot 5 Beartooth Avenue  
 Bemidji MN 56601