



MLS 7045236 Residential

**\$339,000**

1,530 sq ft  
4 bedrooms  
2 baths

22768 Brill Avenue  
Park Rapids MN 56470

Status: Coming Soon

**Description:**

Set on 3.88 acres, this extensively remodeled home offers modern updates in a quiet country setting. The renovation covers all major components, including insulation, wiring, plumbing, mechanical, and a brand new septic system, giving you a truly move in ready home. The main level includes 2 bedrooms, a full bath, a spacious living room, and an open kitchen and dining area with main floor laundry. Upstairs, two additional bedrooms and a half bath provide flexible space for guests or family. Exterior improvements include new LP SmartSide siding, a steel roof, all new windows, and a covered deck that extends the living space outdoors. The 28x40 steel garage offers plenty of room for storage, vehicles, and hobbies. Located just 7 miles from Park Rapids and 5 miles from Osage, this property delivers quiet rural living with quick access to town.

**Additional Details:**

Year Built	1910
Lot Acres	3.88
Lot Dimensions	438.86 x 507.83 x 269.06 x 480
Garage Stalls	2
School District	309
Taxes	\$632
Taxes with Assessments	\$632
Tax Year	2026

**Additional Features:**

**Basement:** Crawl Space, Full **Fuel:** Propane **Garage:** 2 **Heat:** Forced Air **Sewer:** Septic System Compliant - Yes, Tank with Drainage Field  
**Water:** Private, Well **Air Conditioning:** Central Air

**Driving Directions:**

From Park Rapids go 6 miles West on Hwy 34 to Brill Avenue. Make a left on Brill Avenue and go 1.2 miles to property on right.



Listed By:  
Keller Williams Realty Professionals

Affinity Real Estate Inc. participates in the Regional Multiple Listing Service of Minnesota, Inc Broker Reciprocity (sm) program, allowing us to display other broker's listings on our website. All properties are subject to prior sale, change or withdrawal.



Call Affinity Real Estate

**218-237-3333**

[info@affinityrealestate.com](mailto:info@affinityrealestate.com)



Affinity Real Estate - 600 Park Avenue South - Park Rapids MN 56470



website: [www.AffinityRealEstate.com](http://www.AffinityRealEstate.com) | email: [info@affinityrealestate.com](mailto:info@affinityrealestate.com) | office: 218-237-3333 | fax:218-237-3377

**Affinity**  
REAL ESTATE INC

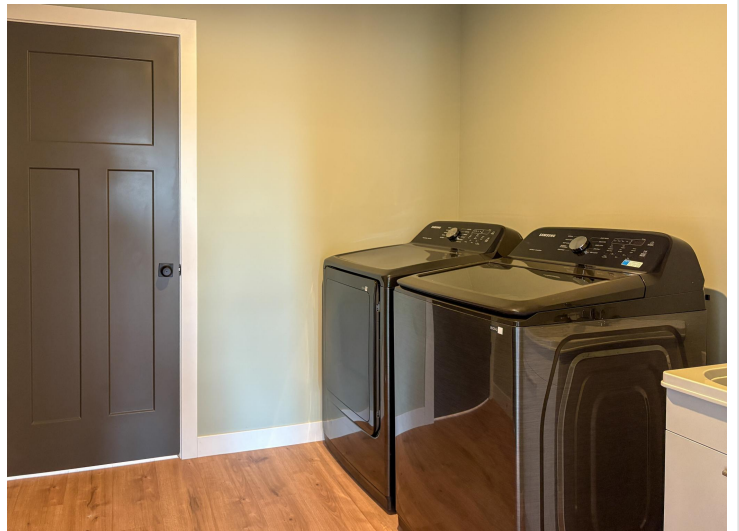
**\$339,000**  
MLS 7045236 Residential  
22768 Brill Avenue  
Park Rapids MN 56470



website: [www.AffinityRealEstate.com](http://www.AffinityRealEstate.com) | email: [info@affinityrealestate.com](mailto:info@affinityrealestate.com) | office: 218-237-3333 | fax: 218-237-3377

**Affinity**  
REAL ESTATE INC

**\$339,000**  
MLS 7045236 Residential  
22768 Brill Avenue  
Park Rapids MN 56470



website: [www.AffinityRealEstate.com](http://www.AffinityRealEstate.com) | email: [info@affinityrealestate.com](mailto:info@affinityrealestate.com) | office: 218-237-3333 | fax: 218-237-3377

**Affinity**  
REAL ESTATE INC

**\$339,000**  
MLS 7045236 Residential  
22768 Brill Avenue  
Park Rapids MN 56470



website: [www.AffinityRealEstate.com](http://www.AffinityRealEstate.com) | email: [info@affinityrealestate.com](mailto:info@affinityrealestate.com) | office: 218-237-3333 | fax:218-237-3377



**\$339,000**  
MLS 7045236 Residential  
22768 Brill Avenue  
Park Rapids MN 56470



website: [www.AffinityRealEstate.com](http://www.AffinityRealEstate.com) | email: [info@affinityrealestate.com](mailto:info@affinityrealestate.com) | office: 218-237-3333 | fax: 218-237-3377

**Affinity**  
REAL ESTATE INC

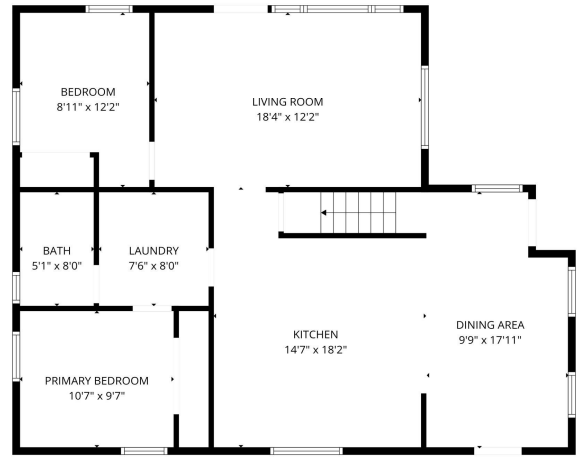
**\$339,000**  
MLS 7045236 Residential  
22768 Brill Avenue  
Park Rapids MN 56470



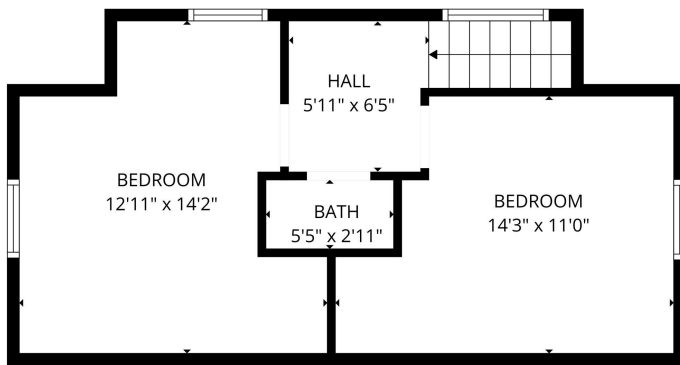
website: [www.AffinityRealEstate.com](http://www.AffinityRealEstate.com) | email: [info@affinityrealestate.com](mailto:info@affinityrealestate.com) | office: 218-237-3333 | fax:218-237-3377

**Affinity**  
REAL ESTATE INC

**\$339,000**  
MLS 7045236 Residential  
22768 Brill Avenue  
Park Rapids MN 56470



FLOOR PLAN CREATED BY CUBICASA APP. MEASUREMENTS DEEMED HIGHLY RELIABLE BUT NOT GUARANTEED.



FLOOR PLAN CREATED BY CUBICASA APP. MEASUREMENTS DEEMED HIGHLY RELIABLE BUT NOT GUARANTEED.

website: [www.AffinityRealEstate.com](http://www.AffinityRealEstate.com) | email: [info@affinityrealestate.com](mailto:info@affinityrealestate.com) | office: 218-237-3333 | fax: 218-237-3377



**\$339,000**  
 MLS 7045236 Residential  
 22768 Brill Avenue  
 Park Rapids MN 56470