



MLS 7045531 Residential

\$285,000

1,512 sq ft
3 bedrooms
2 baths

2337 Webb Forest Court
Hackensack MN 56452

Status: Active

Description:

Enjoy easy one-level living in this charming 3 bedroom, 2 bathroom patio home located in Hackensack. The welcoming front entry leads into a functional kitchen that opens seamlessly to the living room, creating a comfortable and inviting space for everyday living and entertaining. The living room features vaulted tongue-and-groove ceilings that add warmth and character, along with beautiful backyard views and access to the patio—perfect for relaxing or hosting guests.

The spacious primary suite offers a private retreat with a walk-in closet and attached bathroom. An attached insulated two-stall garage provides convenience and extra storage. Outside, the home boasts great curb appeal with attractive log-look vinyl siding for that classic Northwoods feel with low maintenance.

Located less than a mile from the public access to Webb Lake, you can enjoy boating, fishing, and lake life without the cost and upkeep of lakefront property.

Additional Details:


Year Built	2005
Lot Acres	1.95
Lot Dimensions	185x382x355x294
Garage Stalls	2
School District	113
Taxes	\$20
Taxes with Assessments	\$86
Tax Year	2026

Additional Features:

Fuel: Propane **Heat:** Forced Air

Driving Directions:

From MN-371 heading N. into Hackensack turn right onto County Rd 5 NW for 5.7 miles. Turn right onto 24th Ave NW and left onto Webb Forest CT NW for .2 miles to property.



Listed By:
Realty ONE Group Choice

Affinity Real Estate Inc. participates in the Regional Multiple Listing Service of Minnesota, Inc Broker Reciprocity (sm) program, allowing us to display other broker's listings on our website. All properties are subject to prior sale, change or withdrawal.



Call Affinity Real Estate

218-237-3333

info@affinityrealestate.com



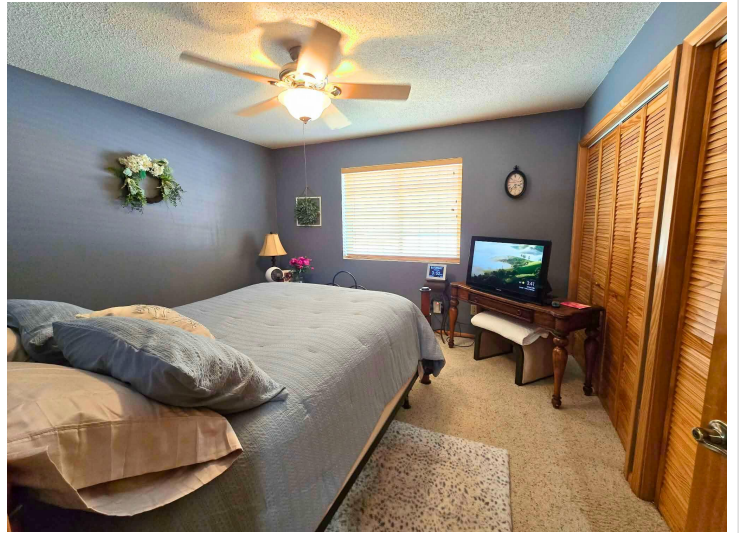
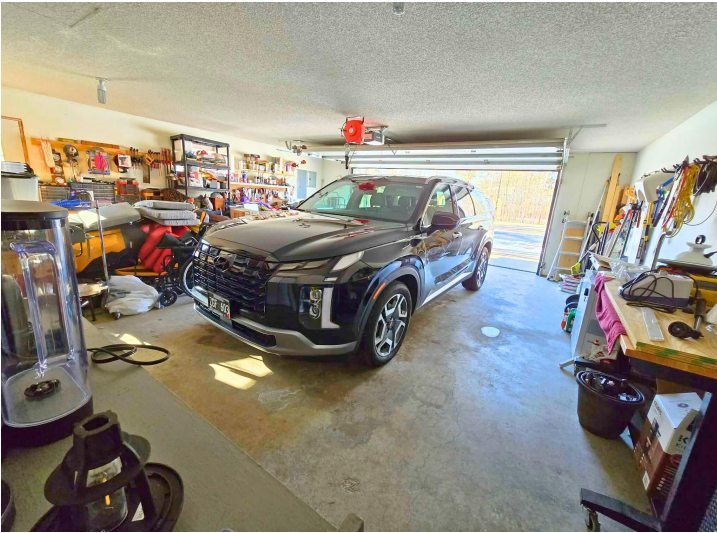
Affinity Real Estate - 600 Park Avenue South - Park Rapids MN 56470



website: www.AffinityRealEstate.com | email: info@affinityrealestate.com | office: 218-237-3333 | fax:218-237-3377

Affinity
REAL ESTATE INC

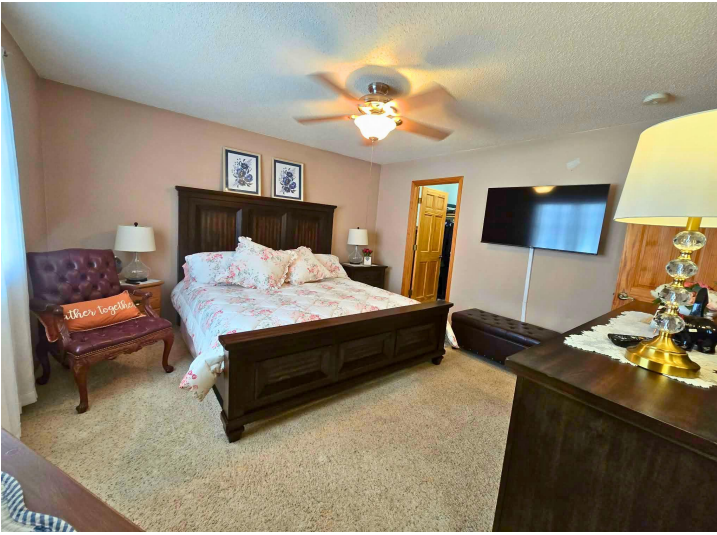
\$285,000
MLS 7045531 Residential
2337 Webb Forest Court
Hackensack MN 56452



website: www.AffinityRealEstate.com | email: info@affinityrealestate.com | office: 218-237-3333 | fax:218-237-3377

Affinity
REAL ESTATE INC

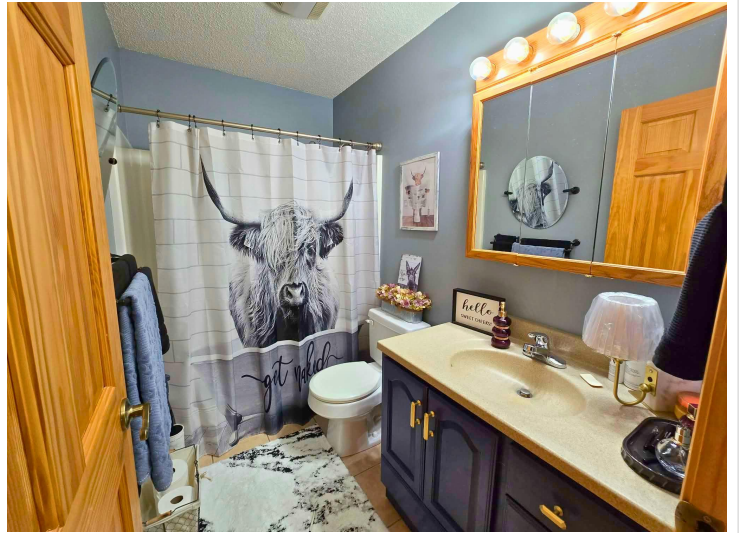
\$285,000
MLS 7045531 Residential
2337 Webb Forest Court
Hackensack MN 56452



website: www.AffinityRealEstate.com | email: info@affinityrealestate.com | office: 218-237-3333 | fax:218-237-3377



\$285,000
MLS 7045531 Residential
2337 Webb Forest Court
Hackensack MN 56452



website: www.AffinityRealEstate.com | email: info@affinityrealestate.com | office: 218-237-3333 | fax:218-237-3377

Affinity
REAL ESTATE INC

\$285,000
MLS 7045531 Residential
2337 Webb Forest Court
Hackensack MN 56452