



MLS 7045578 Residential

\$575,000

1,142 sq ft
1 bedrooms
2 baths

53397 Grouse About Trail
Park Rapids MN 56470

Status: Active

Description:

Experience the best of lakeside living on Boot Lake with this beautifully designed, year-round cabin set on 1.79 acres and 173 feet of pristine, natural sand shoreline—perfect for swimming, relaxing, and making lasting memories. Thoughtfully crafted with warm, inviting décor, this turnkey retreat features a custom kitchen with quality cabinetry, a spacious family room anchored by a stunning stone gas fireplace, and a main-level bedroom complemented by a stylish ¾ bath with a large walk-in tiled shower. A charming log staircase leads to a cozy flex room. Step outside to enjoy the expansive lakeside patio and convenient outdoor walk-in shower, perfect after a day on the water. With a gradual walk for easy access, dock included, nearby recreational trails, and just minutes from Itasca State Park, this exceptional property offers the perfect blend of comfort, recreation, and natural beauty.

Additional Details:

Year Built	2005
Lot Acres	1.79
Lot Dimensions	173 x 431 x 103 x 583
School District	1384
Taxes	\$2,230
Taxes with Assessments	\$2,230
Tax Year	2026

Additional Features:

Fuel: Array **Heat:** Forced Air, Fireplace(s)

Driving Directions:

From Park Rapids, take Highway 71 N 11 miles to CR 41 and turn L. Continue 6 miles to CR 46 and turn R and proceed 1.6 miles and turn R on Grouse About Trail. Proceed .3 miles and turn L and continue to 53397 on the L.



Listed By:
Affinity Real Estate Inc.

Affinity Real Estate Inc. participates in the Regional Multiple Listing Service of Minnesota, Inc Broker Reciprocity (sm) program, allowing us to display other broker's listings on our website. All properties are subject to prior sale, change or withdrawal.



Call Affinity Real Estate

218-237-3333

info@affinityrealestate.com



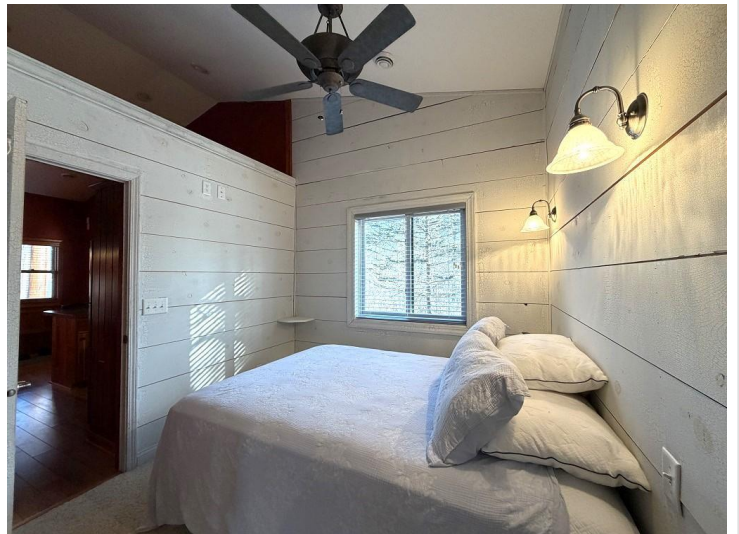
Affinity Real Estate - 600 Park Avenue South - Park Rapids MN 56470



website: www.AffinityRealEstate.com | email: info@affinityrealestate.com | office: 218-237-3333 | fax: 218-237-3377

Affinity
REAL ESTATE INC

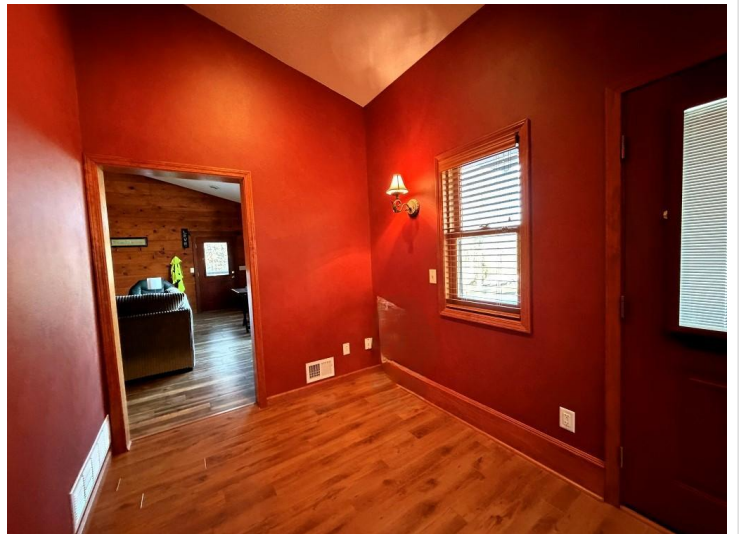
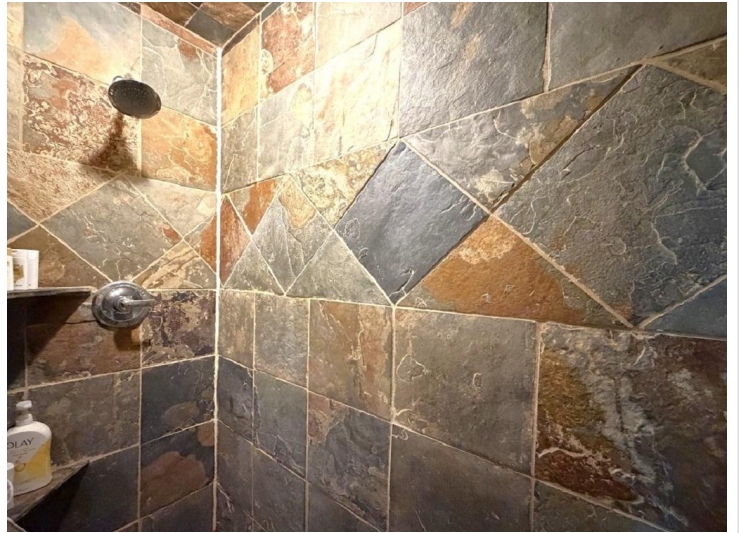
\$575,000
MLS 7045578 Residential
53397 Grouse About Trail
Park Rapids MN 56470



website: www.AffinityRealEstate.com | email: info@affinityrealestate.com | office: 218-237-3333 | fax:218-237-3377

Affinity
REAL ESTATE INC

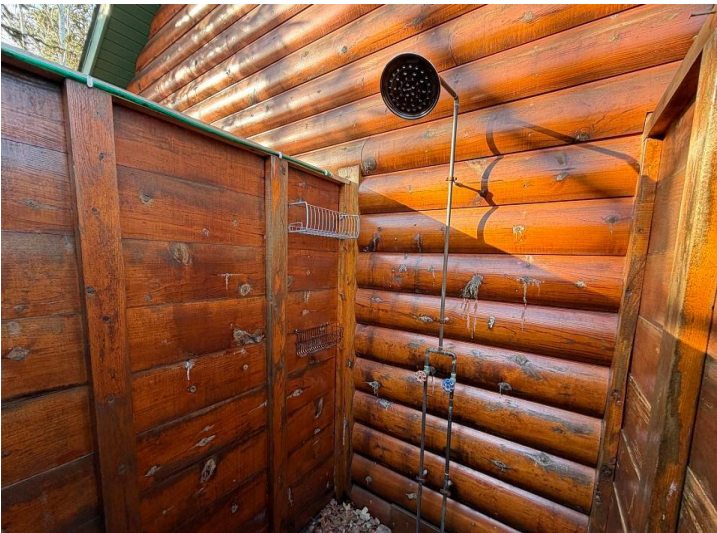
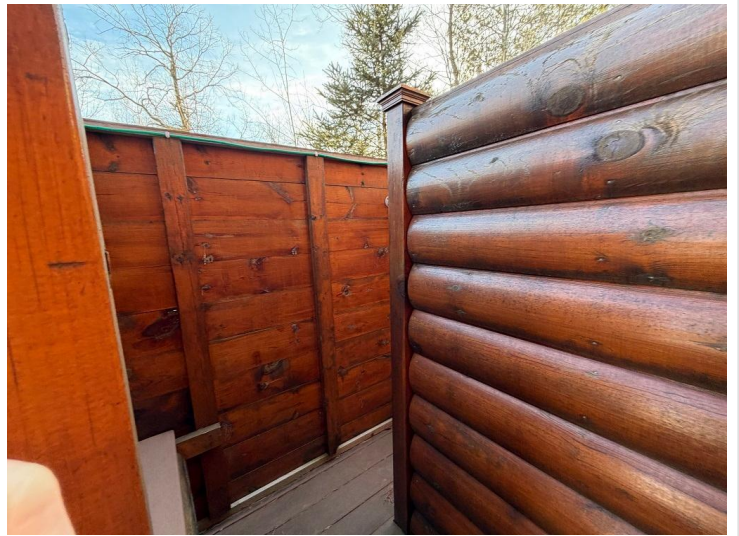
\$575,000
MLS 7045578 Residential
53397 Grouse About Trail
Park Rapids MN 56470



website: www.AffinityRealEstate.com | email: info@affinityrealestate.com | office: 218-237-3333 | fax:218-237-3377



\$575,000
MLS 7045578 Residential
53397 Grouse About Trail
Park Rapids MN 56470



website: www.AffinityRealEstate.com | email: info@affinityrealestate.com | office: 218-237-3333 | fax:218-237-3377



\$575,000
MLS 7045578 Residential
53397 Grouse About Trail
Park Rapids MN 56470



website: www.AffinityRealEstate.com | email: info@affinityrealestate.com | office: 218-237-3333 | fax:218-237-3377

Affinity
REAL ESTATE INC

\$575,000
MLS 7045578 Residential
53397 Grouse About Trail
Park Rapids MN 56470



These data are provided on an "AS-IS" basis, without warranty of any type, expressed or implied, including but not limited to any warranty as to their performance, merchantability, or fitness for any particular purpose.

53397 Grouse About Trail

Becker County

1.2.257

Date: 3/30/2026

website: www.AffinityRealEstate.com | email: info@affinityrealestate.com | office: 218-237-3333 | fax:218-237-3377



\$575,000
 MLS 7045578 Residential
 53397 Grouse About Trail
 Park Rapids MN 56470