



MLS 7045601 Residential

\$664,900

3,728 sq ft
5 bedrooms
4 baths

22173 Erdahl Court
Tenstrike MN 56683

Status: Active



Description:

Perched above the shimmering shores of Gull Lake, this exceptional custom home offers the rare combination of elevated panoramic views and hard sand-bottom lakeshore—creating the ultimate Northwoods retreat. Set on a beautifully private lot with a paved drive. This property welcomes you home with timeless craftsmanship and thoughtful design at every turn.

Inside, you'll love the airy feel of 9ft ceilings, rich HW floors, elegant arched drywall accents, and a stunning tray ceiling that adds warmth & architectural character. The great room is a showstopper, featuring custom built-ins surrounding a beautiful fireplace—the perfect focal point for cozy evenings or entertaining guests while taking in lake views.

The kitchen is equally impressive with gorgeous cherry cabinetry, solid surface countertops, abundant workspace, and seamless flow into the main living areas. Every detail was designed for both comfort and quality.

You will find 3 bedrooms on the main floor and 3 additional rooms with egress window in the basement.


Built to last, the home features an insulated concrete poured foundation for efficiency, durability, and peace of mind.

You will appreciate the breezeway that leads to the 3+ stall garage, where the first oversized stall has been transformed into the bonus space—complete with its own kitchen and full bathroom. Ideal for hobbies, entertaining, an additional flex space for your needs, or can still be used as a garage stall.

Outside, enjoy spectacular sunsets from the maintenance free 20x20 deck, crystal-clear shoreline, and a hard sand lake bottom that makes lake days effortless. Whether you're looking for a full-time residence or luxury getaway, this Gull Lake property delivers comfort, quality, and unforgettable waterfront living.

Additional Details:

Year Built 2014
Lot Acres 1.42
Lot Dimensions 191x389x152x357
Garage Stalls 3

School District	1414
 Listed By: Real Broker, LLC \$5,502 Taxes with Assessments \$5,502 Affinity Real Estate Inc. participates in the Regional Multiple Listing Service of Minnesota, Inc Broker Reciprocity (sm) program, allowing us to display other broker's listings on our website. All properties are subject to change or withdrawal.	



Call Affinity Real Estate
218-237-3333
info@affinityrealestate.com



Basement: Egress Window(s), Full, Concrete **Fuel:** Array **Garage:** 3 **Heat:** Dual Fuel/Off Peak, Forced Air, Fireplace(s), Heat Pump, Wood Stove
Sewer: Private Sewer, Tank with Drainage Field **Water:** Private Well **Air Conditioning:** Central Air, Heat Pump

Driving Directions:

From Rapid City 10 Miles North on Hwy 74 West on G.D. 1001 7.5 miles Right on Erdahl Ct



website: www.AffinityRealEstate.com | email: info@affinityrealestate.com | office: 218-237-3333 | fax:218-237-3377

Affinity
REAL ESTATE INC

\$664,900
MLS 7045601 Residential
22173 Erdahl Court
Tenstrike MN 56683



website: www.AffinityRealEstate.com | email: info@affinityrealestate.com | office: 218-237-3333 | fax:218-237-3377



\$664,900
MLS 7045601 Residential
22173 Erdahl Court
Tenstrike MN 56683



website: www.AffinityRealEstate.com | email: info@affinityrealestate.com | office: 218-237-3333 | fax: 218-237-3377

Affinity
REAL ESTATE INC

\$664,900
MLS 7045601 Residential
22173 Erdahl Court
Tenstrike MN 56683



website: www.AffinityRealEstate.com | email: info@affinityrealestate.com | office: 218-237-3333 | fax:218-237-3377

Affinity
REAL ESTATE INC

\$664,900
MLS 7045601 Residential
22173 Erdahl Court
Tenstrike MN 56683



website: www.AffinityRealEstate.com | email: info@affinityrealestate.com | office: 218-237-3333 | fax: 218-237-3377

Affinity
REAL ESTATE INC

\$664,900
MLS 7045601 Residential
22173 Erdahl Court
Tenstrike MN 56683



website: www.AffinityRealEstate.com | email: info@affinityrealestate.com | office: 218-237-3333 | fax: 218-237-3377

Affinity
REAL ESTATE INC

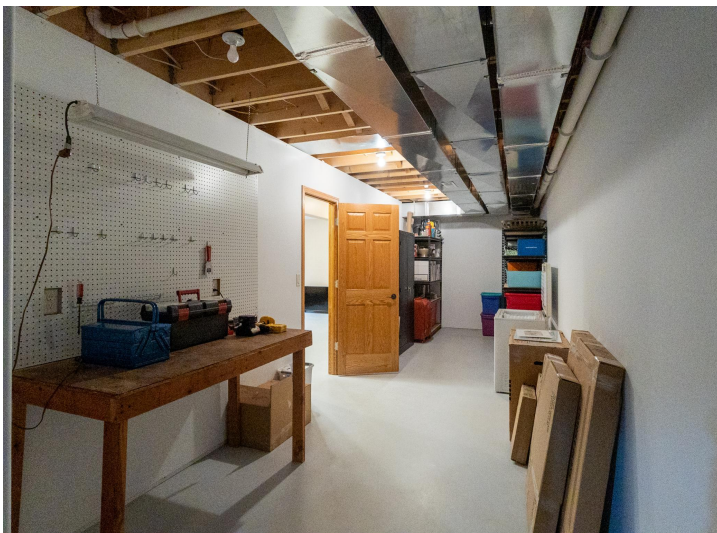
\$664,900
MLS 7045601 Residential
22173 Erdahl Court
Tenstrike MN 56683



website: www.AffinityRealEstate.com | email: info@affinityrealestate.com | office: 218-237-3333 | fax:218-237-3377

Affinity
REAL ESTATE INC

\$664,900
MLS 7045601 Residential
22173 Erdahl Court
Tenstrike MN 56683



website: www.AffinityRealEstate.com | email: info@affinityrealestate.com | office: 218-237-3333 | fax:218-237-3377



\$664,900
MLS 7045601 Residential
22173 Erdahl Court
Tenstrike MN 56683



website: www.AffinityRealEstate.com | email: info@affinityrealestate.com | office: 218-237-3333 | fax:218-237-3377

Affinity
REAL ESTATE INC

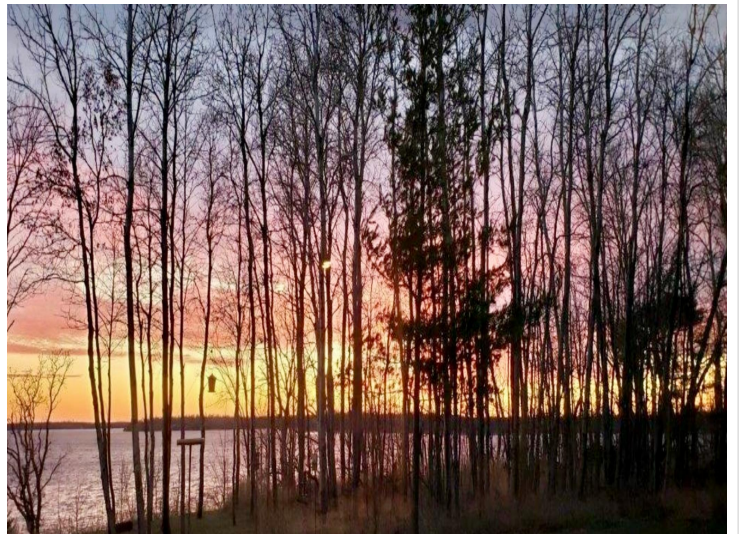
\$664,900
MLS 7045601 Residential
22173 Erdahl Court
Tenstrike MN 56683



website: www.AffinityRealEstate.com | email: info@affinityrealestate.com | office: 218-237-3333 | fax:218-237-3377

Affinity
REAL ESTATE INC

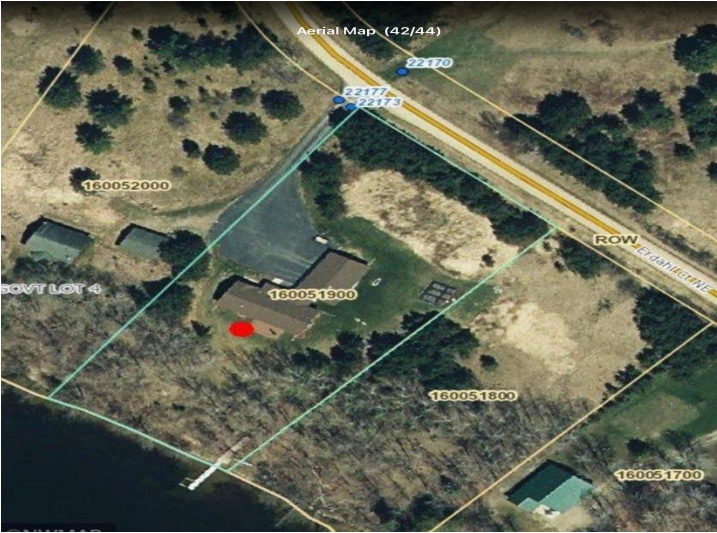
\$664,900
MLS 7045601 Residential
22173 Erdahl Court
Tenstrike MN 56683



website: www.AffinityRealEstate.com | email: info@affinityrealestate.com | office: 218-237-3333 | fax:218-237-3377



\$664,900
MLS 7045601 Residential
22173 Erdahl Court
Tenstrike MN 56683



website: www.AffinityRealEstate.com | email: info@affinityrealestate.com | office: 218-237-3333 | fax: 218-237-3377

Affinity
REAL ESTATE INC

\$664,900
MLS 7045601 Residential
22173 Erdahl Court
Tenstrike MN 56683

website: www.AffinityRealEstate.com | email: info@affinityrealestate.com | office: 218-237-3333 | fax:218-237-3377



\$664,900
MLS 7045601 Residential
22173 Erdahl Court
Tenstrike MN 56683