



MLS 7045641 Residential

\$575,000

2,197 sq ft
3 bedrooms
2 baths

20801 County 50
Park Rapids MN 56470

Status: Coming Soon

Description:

Brand-new construction on 6.4 acres surrounded by state land! This beautifully designed 3-bedroom, 2-bath home offers convenient one-level living with comfortable in-floor heat, custom alder cabinetry, and abundant storage throughout. The spacious bonus room above the oversized garage provides endless possibilities - use it as a game room, home office, guest space, or a dedicated area for the kids' toys. The primary suite features a walk-in closet and private bathroom, while the oversized garage offers plenty of room for vehicles, ATVs, snowmobiles, lake gear, and a workshop. Enjoy peaceful mornings on the covered front porch and relax in the evenings on the wraparound patio, all while taking in the privacy and natural beauty of the surrounding state land. Conveniently located near Little Sand Lake access, this property is ideal for boating, fishing, trail riding, wildlife watching, and enjoying everything Minnesota's outdoors has to offer.

Additional Details:

Year Built	2026
Lot Acres	6.39
Lot Dimensions	988x651x752
Garage Stalls	3
School District	309
Taxes	\$198
Taxes with Assessments	\$198
Tax Year	2026

Additional Features:

Basement: None **Fuel:** Electric, Propane **Garage:** 3 **Heat:** Baseboard, Boiler, Ductless Mini-Split, In-Floor Heating, Radiant, Zoned **Sewer:** Mound Septic, Private Sewer, Septic System Compliant - Yes **Water:** Drilled, Private, Well **Air Conditioning:** Ductless Mini-Split

Driving Directions:

From Park Rapids, go east on Hwy 34 to Hwy 226 on (Dorset Corner) on the left. Take a right onto County 50 and the property is on the right.



Listed By:
Keller Williams Realty Professionals

Affinity Real Estate Inc. participates in the Regional Multiple Listing Service of Minnesota, Inc Broker Reciprocity (sm) program, allowing us to display other broker's listings on our website. All properties are subject to prior sale, change or withdrawal.



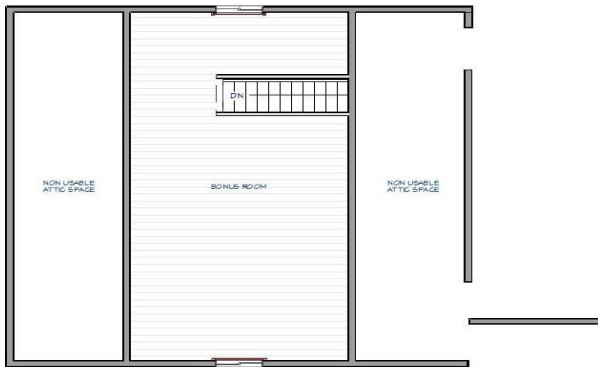
Call Affinity Real Estate

218-237-3333

info@affinityrealestate.com



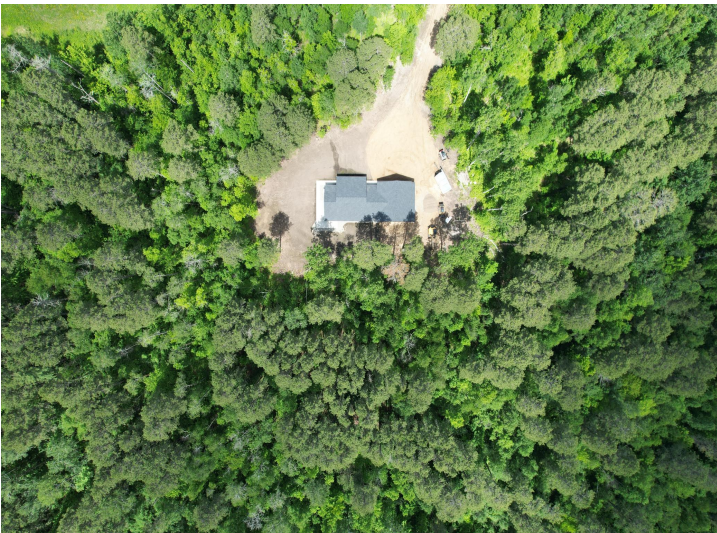
Affinity Real Estate - 600 Park Avenue South - Park Rapids MN 56470



website: www.AffinityRealEstate.com | email: info@affinityrealestate.com | office: 218-237-3333 | fax:218-237-3377



\$575,000
 MLS 7045641 Residential
 20801 County 50
 Park Rapids MN 56470



website: www.AffinityRealEstate.com | email: info@affinityrealestate.com | office: 218-237-3333 | fax:218-237-3377



\$575,000
MLS 7045641 Residential
20801 County 50
Park Rapids MN 56470



website: www.AffinityRealEstate.com | email: info@affinityrealestate.com | office: 218-237-3333 | fax:218-237-3377



\$575,000
MLS 7045641 Residential
20801 County 50
Park Rapids MN 56470