



MLS 7045874 Residential

\$136,500

2,040 sq ft
2 bedrooms
1 baths

801 Irvine Avenue
Bemidji MN 56601

Status: Active



Description:

This 1910 home sits on a large corner lot and offers a great opportunity to restore, renovate, and make it your own. The main level features tall ceilings, original hardwood floors, trim, and solid wood doors, blending historic character with flexible living space.

The home includes an updated bathroom and a spacious kitchen ready for redesign. Upstairs, the second floor has been gutted to the studs, providing a blank slate to create additional space to fit your vision. Bedrooms, creative studio, or home office just to name a few. The windows and gabled roofline invite natural light into the space whether its sun, or the moon and stars.


Highlights:

- Original hardwood floors, trim, and hardware
- Tall ceilings and classic details
- Flexible main-level layout
- Updated bathroom
- Large kitchen ready for renovation
- Second floor ready for custom build-out

A great opportunity for investors or buyers looking to bring new life to a classic home.

Additional Details:

Year Built	1910
Lot Acres	0.321
Lot Dimensions	100x140
Garage Stalls	1
School District	1386
Taxes	\$1,805
Taxes with Assessments	\$1,996

 Listed By: 2026 Realty Experts, LLC

Additional Features:
Affinity Real Estate Inc. participates in the Regional Multiple Listing Service of Minnesota, Inc Broker Reciprocity (RSM) Program, allowing us to display and connect listings on our website. All properties are subject to prior sale, change or withdrawal.

Driving Directions:



Call Affinity Real Estate

218-237-3333

info@affinityrealestate.com

Boiler, Hot Water, Sewer, City Sewer/Connected



Affinity Real Estate - 600 Park Avenue South - Park Rapids MN 56470

Take Anne Street east to Irvine Ave, go south about 3 miles to 8th St. Home is on the west side of the road, corner lot.



website: www.AffinityRealEstate.com | email: info@affinityrealestate.com | office: 218-237-3333 | fax: 218-237-3377

Affinity
REAL ESTATE INC

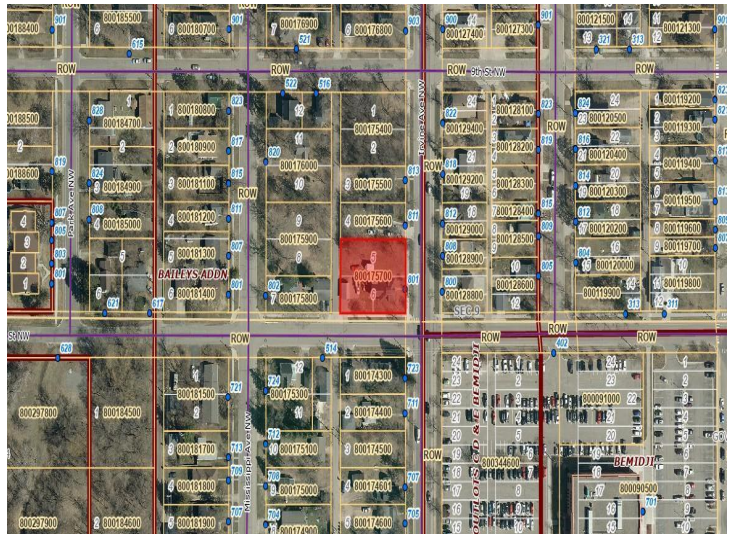
\$136,500
MLS 7045874 Residential
801 Irvine Avenue
Bemidji MN 56601



website: www.AffinityRealEstate.com | email: info@affinityrealestate.com | office: 218-237-3333 | fax:218-237-3377

Affinity
REAL ESTATE INC

\$136,500
MLS 7045874 Residential
801 Irvine Avenue
Bemidji MN 56601



website: www.AffinityRealEstate.com | email: info@affinityrealestate.com | office: 218-237-3333 | fax:218-237-3377



\$136,500
MLS 7045874 Residential
801 Irvine Avenue
Bemidji MN 56601