



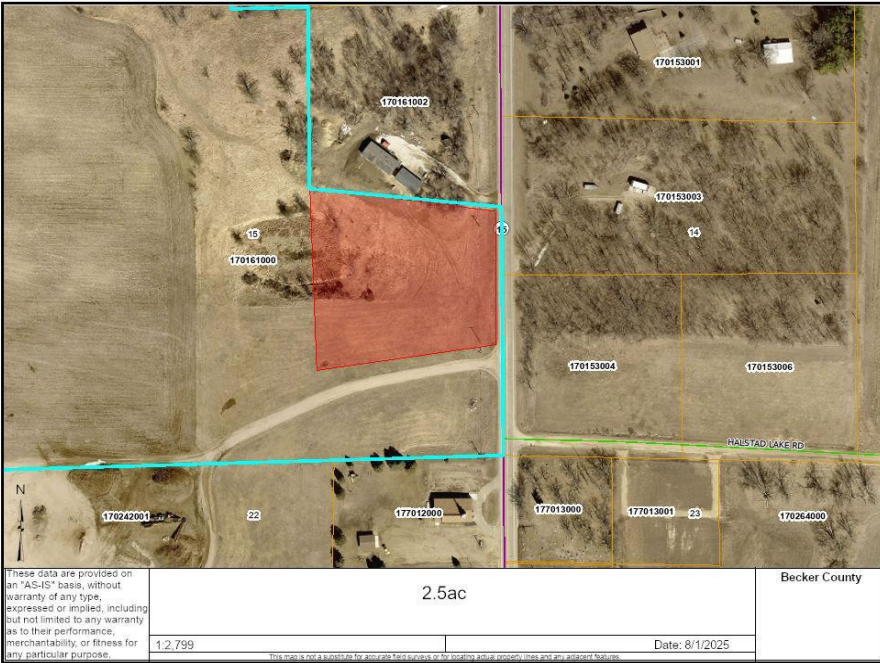
MLS 7045903 Land

\$65,000

2.5 Acres
Raw Land

TBD County Highway 15
Detroit Lakes MN 56501

Status: Active



These data are provided on an "AS-IS" basis, without warranty of any type, expressed or implied, including but not limited to any warranty as to their performance, merchantability, or fitness for any particular purpose.

2.5ac		Becker County
1.2.799		Date: 8/1/2025

Description:

Land! 2.5 acres! Located just North of Lake Eunice on County Road 15. Close to Lake Maud and Lake Melissa. A nice location to build a home, shouse, or personal storage shed in the heart of lakes country. Situated between Cormorant Village & Shoreham as well as Detroit Lakes. This is a split from parcel 170161000. No commercial! Covenants apply!

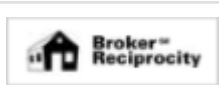
Additional Details:

Lot Acres	2.5
Lot Dimensions	2.5 ac
School District	1299
Taxes	\$458
Taxes with Assessments	\$458
Tax Year	2025

Additional Features:

Driving Directions:

From Highway 10 take County Rd 15 South



Listed By:
Counselor Realty Detroit Lakes

Affinity Real Estate Inc. participates in the Regional Multiple Listing Service of Minnesota, Inc Broker Reciprocity (sm) program, allowing us to display other broker's listings on our website. All properties are subject to prior sale, change or withdrawal.



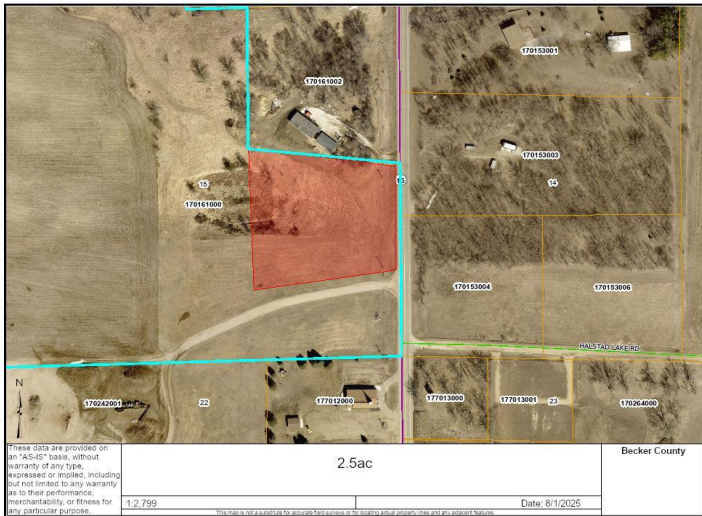
Call Affinity Real Estate

218-237-3333

info@affinityrealestate.com



Affinity Real Estate - 600 Park Avenue South - Park Rapids MN 56470



website: www.AffinityRealEstate.com | email: info@affinityrealestate.com | office: 218-237-3333 | fax:218-237-3377



\$65,000
 MLS 7045903 Land
 TBD County Highway 15
 Detroit Lakes MN 56501