



MLS 7045938 Land

\$11,400

0.44 Acres
Other

30XXX Rainier Drive
Breezy Point MN 56472

Status: Active

Description:

Don't miss this nearly half-acre in-town lot full of potential. Nicely wooded and set in the heart of the lakes area, this property is ready for your building dreams, with electricity available at the road. Located on a paved, city-maintained roadway in Breezy Point, you'll be just a short golf cart or car ride from restaurants, golf courses, trails, lakes, and Breezy Point Resort. Enjoy convenient access to shopping, grocery stores, and entertainment just minutes away. Come check out your potential new homesite In beautiful Crow Wing County, Minnesota !!!

Please check with the City of Breezy Point for the latest land use zoning requirements regarding your future building plans or camping use. Schedule your showing today!

Additional Details:

Lot Acres	0.44
Lot Dimensions	130 x 150 x 130 x 150
School District	909
Taxes	\$144
Taxes with Assessments	\$144
Tax Year	2025

Additional Features:

Driving Directions:

From MN-371 Take the County Rd 11 exit toward Pequot Lakes/Breezy Pt. At the traffic circle, take the 1st exit onto Co Rd 11. Turn left onto Rainier Dr. Destination will be on the right.



Listed By:
Timber Ghost Realty, LLC

Affinity Real Estate Inc. participates in the Regional Multiple Listing Service of Minnesota, Inc Broker Reciprocity (sm) program, allowing us to display other broker's listings on our website. All properties are subject to prior sale, change or withdrawal.



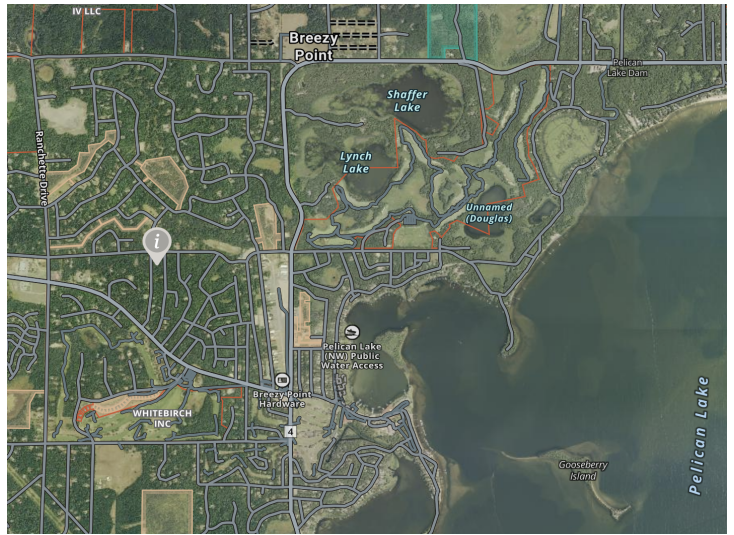
Call Affinity Real Estate

218-237-3333

info@affinityrealestate.com



Affinity Real Estate - 600 Park Avenue South - Park Rapids MN 56470



website: www.AffinityRealEstate.com | email: info@affinityrealestate.com | office: 218-237-3333 | fax:218-237-3372



\$11,400
MLS 7045938 Land
30XXX Rainier Drive
Breezy Point MN 56472