



MLS 7045940 Residential

\$262,500

1,920 sq ft
3 bedrooms
2 baths

324 25th Street
Bemidji MN 56601

Status: Active



Description:

Welcome to a practical split-level home offering 3+ bedrooms, 2 baths, and plenty of space for a great option for a homeowner or investor. The main level features new flooring throughout and a bright south facing living area with vaulted ceilings, along with a functional kitchen and dining area opening to a deck with a roll out awning overlooking the fenced backyard. The large primary bedroom includes multiple closets, providing ample storage. While the lower level adds valuable living space for a family room, a dedicated office (could be a 4th bedroom), two additional bedrooms, and a full bathroom, also with new flooring. Additional highlights include a 2-car attached garage and a private fully fenced yard with mature trees for shade and a storage shed, perfect for those green thumbs or play toys. The home is conveniently located, offering strong potential as a rental investment or a comfortable primary residence.

Additional Details:

Year Built	1995
Lot Acres	0.23
Lot Dimensions	78x128
Garage Stalls	2
School District	1386
Taxes	\$2,754
Taxes with Assessments	\$2,754
Tax Year	2025

Additional Features:

Basement: Block, Daylight/Lookout Windows, Egress Window(s), Finished, Full **Fuel:** Array **Garage:** 2 **Heat:** Forced Air **Sewer:** City Sewer/Connected **Water:** City Water/Connected **Air Conditioning:** Central Air

Driving Directions:

In Bemidji, from Paul Bunyan Dr, go north on Irvine Ave, take a right at 25th - first residence on the right side after the Dental Building.



Listed By:
RE/MAX Results - Nisswa

Affinity Real Estate Inc. participates in the Regional Multiple Listing Service of Minnesota, Inc Broker Reciprocity (sm) program, allowing us to display other broker's listings on our website. All properties are subject to prior sale, change or withdrawal.



Call Affinity Real Estate

218-237-3333

info@affinityrealestate.com



Affinity Real Estate - 600 Park Avenue South - Park Rapids MN 56470



website: www.AffinityRealEstate.com | email: info@affinityrealestate.com | office: 218-237-3333 | fax:218-237-3377

Affinity
REAL ESTATE INC

\$262,500
MLS 7045940 Residential
324 25th Street
Bemidji MN 56601



website: www.AffinityRealEstate.com | email: info@affinityrealestate.com | office: 218-237-3333 | fax: 218-237-3377

Affinity
REAL ESTATE INC

\$262,500
MLS 7045940 Residential
324 25th Street
Bemidji MN 56601



website: www.AffinityRealEstate.com | email: info@affinityrealestate.com | office: 218-237-3333 | fax:218-237-3377

Affinity
REAL ESTATE INC

\$262,500
MLS 7045940 Residential
324 25th Street
Bemidji MN 56601



website: www.AffinityRealEstate.com | email: info@affinityrealestate.com | office: 218-237-3333 | fax: 218-237-3377

Affinity
REAL ESTATE INC

\$262,500
MLS 7045940 Residential
324 25th Street
Bemidji MN 56601

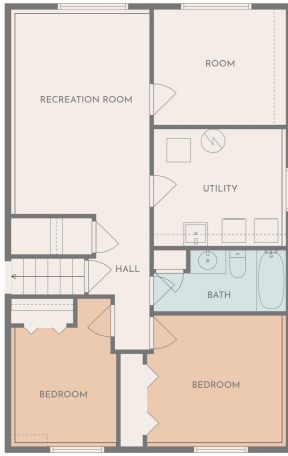


FLOOR PLAN CREATED BY CUBICASA APP. MEASUREMENTS DEEMED HIGHLY RELIABLE BUT NOT GUARANTEED.

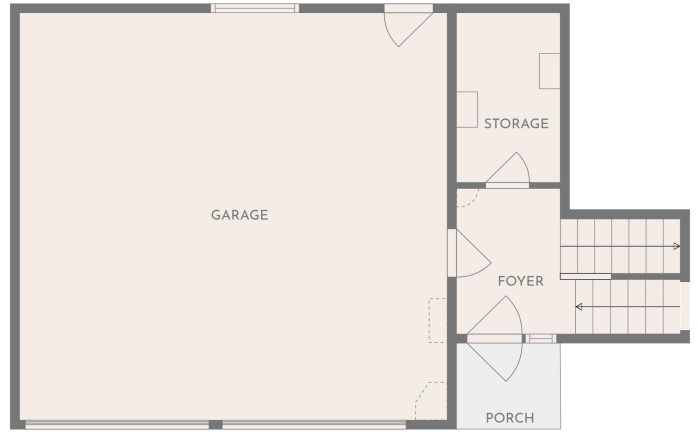
website: www.AffinityRealEstate.com | email: info@affinityrealestate.com | office: 218-237-3333 | fax: 218-237-3377



\$262,500
MLS 7045940 Residential
324 25th Street
Bemidji MN 56601



FLOOR PLAN CREATED BY CUBICASA APP. MEASUREMENTS DEEMED HIGHLY RELIABLE BUT NOT GUARANTEED.



FLOOR PLAN CREATED BY CUBICASA APP. MEASUREMENTS DEEMED HIGHLY RELIABLE BUT NOT GUARANTEED.



FLOOR PLAN CREATED BY CUBICASA APP. MEASUREMENTS DEEMED HIGHLY RELIABLE BUT NOT GUARANTEED.

website: www.AffinityRealEstate.com | email: info@affinityrealestate.com | office: 218-237-3333 | fax:218-237-3377



\$262,500
 MLS 7045940 Residential
 324 25th Street
 Bemidji MN 56601