



MLS 7046240 Residential

\$1,175,000

2,338 sq ft
3 bedrooms
3 baths

36805 Sunrise Lane
Ponsford MN 56575

Status: Active

Description:

Nestled in the heart of Minnesota on a level lot, sits this 3-bedroom 3-bathroom custom built home on prestigious Bad Medicine Lake. Bad Medicine Lake is nothing short of a gem for those seeking serene and pristine escape. Known for its clarity, this lake reaches depth between 80'-100'. Making it ideal for scuba diving, adventurers and leisure seekers alike. Inside the home you are immediately greeted by the vaulted ceilings and floor to ceiling windows taking in that gorgeous lake view. Main floor has two bedrooms and full bathroom. With main floor laundry for added convenience. Kitchen has stainless steel appliances, custom cabinetry, granite large center island and quartz counter tops. Upstairs in the loft is additional sleeping space with its own private bathroom and walk-in closet.

Cozy up on those cold winter nights with in-floor heat throughout or the gas burning fireplace.

An attached garage as well as a detached two stall garage for any extra toys, along with its own heated workshop for all your project needs and its own bathroom.

Above the garage you will find additional living space with flex room. Whether you need extra room for guests or your own private retreat.

This lake property has it all and is sure to impress. Whether you seek the thrill of a good catch, the tranquility of a quiet swim, or simply the beauty of a lakeside afternoon this property stands as a stunning example of lake life's finest.

Additional Details:

Year Built	2009
Lot Acres	1.7
Lot Dimensions	581'x 176.'x 175'x 660'
Garage Stalls	3
School District	1697
Taxes	\$5,950
Taxes with Assessments	\$6,010
Tax Year	2025

Additional Features:

Fuel: Array **Heat:** Forced Air, Fireplace(s), Heat Pump, In-Floor Heating

Driving Directions:

From Highway 37, go 1.6 miles and turn left onto Co hwy 37. Go 14 miles and turn right onto Sunrise Ln. Property on your left in 0.1 miles.
Listed By: Jack Chivers Realty
Affinity Real Estate Inc. participates in the Regional Multiple Listing Service of Minnesota, Inc Broker Reciprocity (sm) program, allowing us to display other broker's listings on our website. All properties are subject to prior sale, change or withdrawal.



Call Affinity Real Estate

218-237-3333

info@affinityrealestate.com



Affinity Real Estate - 600 Park Avenue South - Park Rapids MN 56470



website: www.AffinityRealEstate.com | email: info@affinityrealestate.com | office: 218-237-3333 | fax:218-237-3377



\$1,175,000
MLS 7046240 Residential
36805 Sunrise Lane
Ponsford MN 56575



website: www.AffinityRealEstate.com | email: info@affinityrealestate.com | office: 218-237-3333 | fax: 218-237-3377

Affinity
REAL ESTATE INC

\$1,175,000
MLS 7046240 Residential
36805 Sunrise Lane
Ponsford MN 56575



website: www.AffinityRealEstate.com | email: info@affinityrealestate.com | office: 218-237-3333 | fax: 218-237-3377

Affinity
REAL ESTATE INC

\$1,175,000
MLS 7046240 Residential
36805 Sunrise Lane
Ponsford MN 56575



website: www.AffinityRealEstate.com | email: info@affinityrealestate.com | office: 218-237-3333 | fax: 218-237-3377

Affinity
REAL ESTATE INC

\$1,175,000
MLS 7046240 Residential
36805 Sunrise Lane
Ponsford MN 56575



website: www.AffinityRealEstate.com | email: info@affinityrealestate.com | office: 218-237-3333 | fax: 218-237-3377

Affinity
REAL ESTATE INC

\$1,175,000
MLS 7046240 Residential
36805 Sunrise Lane
Ponsford MN 56575



website: www.AffinityRealEstate.com | email: info@affinityrealestate.com | office: 218-237-3333 | fax:218-237-3377

Affinity
REAL ESTATE INC

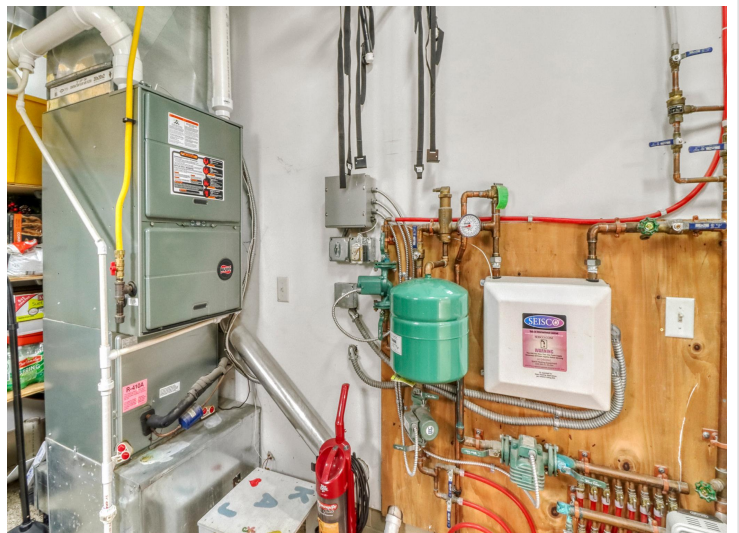
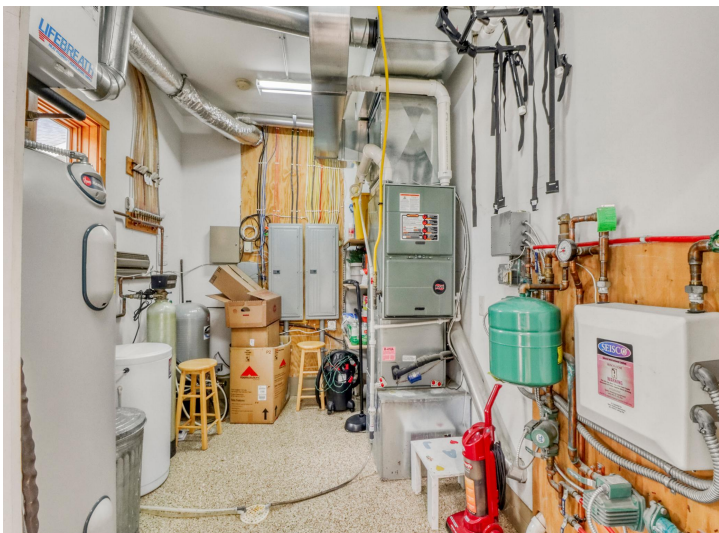
\$1,175,000
MLS 7046240 Residential
36805 Sunrise Lane
Ponsford MN 56575



website: www.AffinityRealEstate.com | email: info@affinityrealestate.com | office: 218-237-3333 | fax:218-237-3377

Affinity
REAL ESTATE INC

\$1,175,000
MLS 7046240 Residential
36805 Sunrise Lane
Ponsford MN 56575



website: www.AffinityRealEstate.com | email: info@affinityrealestate.com | office: 218-237-3333 | fax:218-237-3377

Affinity
REAL ESTATE INC

\$1,175,000
MLS 7046240 Residential
36805 Sunrise Lane
Ponsford MN 56575



website: www.AffinityRealEstate.com | email: info@affinityrealestate.com | office: 218-237-3333 | fax: 218-237-3377



\$1,175,000
MLS 7046240 Residential
36805 Sunrise Lane
Ponsford MN 56575



website: www.AffinityRealEstate.com | email: info@affinityrealestate.com | office: 218-237-3333 | fax:218-237-3377

Affinity
REAL ESTATE INC

\$1,175,000
MLS 7046240 Residential
36805 Sunrise Lane
Ponsford MN 56575



website: www.AffinityRealEstate.com | email: info@affinityrealestate.com | office: 218-237-3333 | fax:218-237-3377

Affinity
REAL ESTATE INC

\$1,175,000
MLS 7046240 Residential
36805 Sunrise Lane
Ponsford MN 56575



website: www.AffinityRealEstate.com | email: info@affinityrealestate.com | office: 218-237-3333 | fax:218-237-3377



\$1,175,000
MLS 7046240 Residential
36805 Sunrise Lane
Ponsford MN 56575



Bad Medicine Lake Home
 1:1,128
 Date: 4/2/2026
 These data are provided on an "AS-IS" basis, without warranty of any type, expressed or implied, including but not limited to any warranty as to their performance, merchantability, or fitness for any particular purpose.

website: www.AffinityRealEstate.com | email: info@affinityrealestate.com | office: 218-237-3333 | fax: 218-237-3377



\$1,175,000
 MLS 7046240 Residential
 36805 Sunrise Lane
 Ponsford MN 56575



website: www.AffinityRealEstate.com | email: info@affinityrealestate.com | office: 218-237-3333 | fax:218-237-3377



\$1,175,000
MLS 7046240 Residential
36805 Sunrise Lane
Ponsford MN 56575