



MLS 7046334 Residential Income

\$220,000

Description:

Cash flow in the country! This fully occupied triplex in Motley offers a strong start—or addition—to any real estate portfolio. The property features a brand-new roof and three well-maintained units, each with separately metered gas and electric paid by the tenants, giving you immediate, worry-free income from day one. There's also an opportunity for an owner-occupant buyer, with units available that allow you to move in with a low down payment and live for little to no cost while building long-term equity Two 1 bed units rented at \$750, the 4 bedroom unit rented for \$1250.

The property has 2 garage units included with the apartments rent, and 1 garage + 3 additional storage units for additional income! Storage leases in place for \$240/MO on 3 of the 4 additional storage units, with one vacant storage unit to be leased. Collecting almost \$3,100 in total monthly income.

Additional Details:

Year Built	1918
Lot Acres	0.172
Lot Dimensions	100x150
Garage Stalls	3
School District	1062
Taxes	\$2,752
Taxes with Assessments	\$2,752
Tax Year	2025

Additional Features:

Basement: Full **Fuel:** Array **Garage:** 3 **Heat:** Forced Air **Sewer:** City Sewer/Connected **Water:** City Water/Connected

Driving Directions:

From Motley go south on US 10



Listed By:
Keller Williams Classic Rlty NW

Affinity Real Estate Inc. participates in the Regional Multiple Listing Service of Minnesota, Inc Broker Reciprocity (sm) program, allowing us to display other broker's listings on our website. All properties are subject to prior sale, change or withdrawal.



Call Affinity Real Estate

218-237-3333

info@affinityrealestate.com



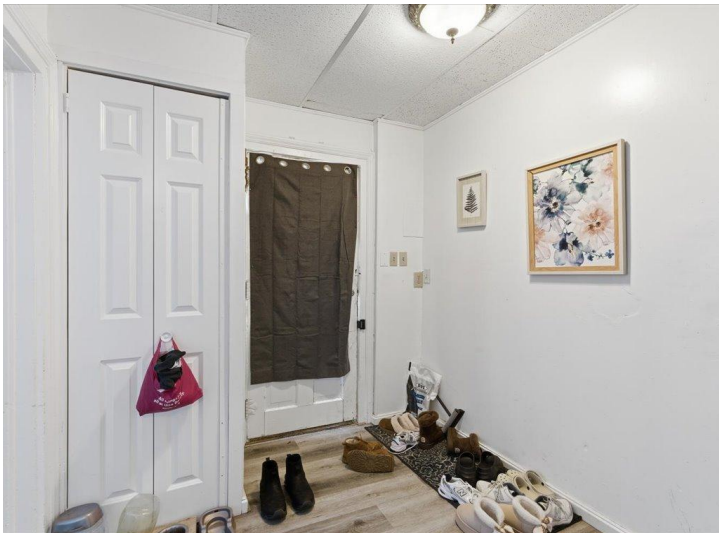
Affinity Real Estate - 600 Park Avenue South - Park Rapids MN 56470



website: www.AffinityRealEstate.com | email: info@affinityrealestate.com | office: 218-237-3333 | fax:218-237-3377



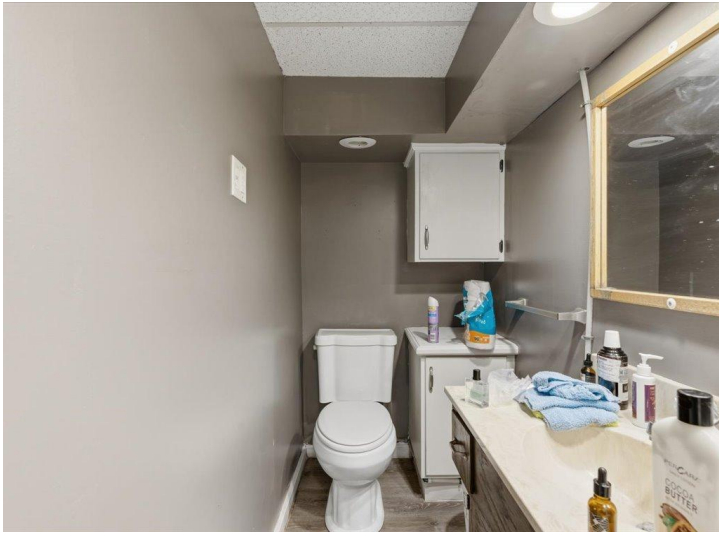
\$220,000
MLS 7046334 Residential
Income
297 US 10
Motley MN 56466



website: www.AffinityRealEstate.com | email: info@affinityrealestate.com | office: 218-237-3333 | fax:218-237-3377



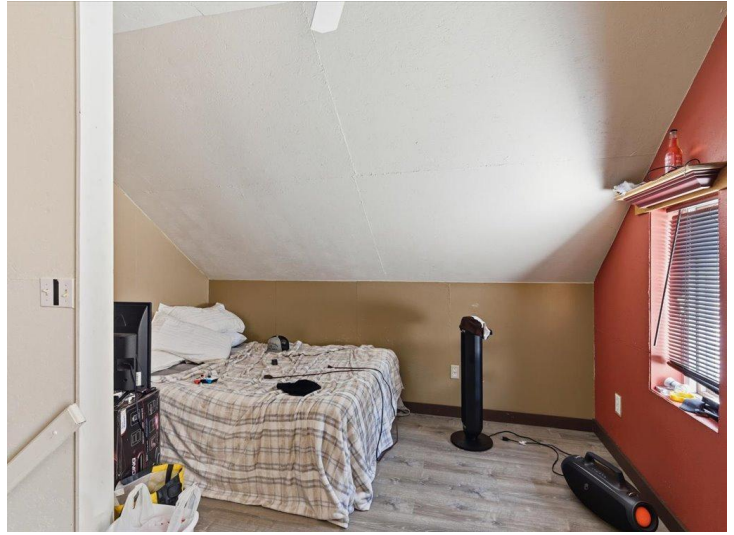
\$220,000
MLS 7046334 Residential
Income
297 US 10
Motley MN 56466



website: www.AffinityRealEstate.com | email: info@affinityrealestate.com | office: 218-237-3333 | fax:218-237-3377

Affinity
REAL ESTATE INC

\$220,000
MLS 7046334 Residential
Income
297 US 10
Motley MN 56466



website: www.AffinityRealEstate.com | email: info@affinityrealestate.com | office: 218-237-3333 | fax:218-237-3377



\$220,000
MLS 7046334 Residential
Income
297 US 10
Motley MN 56466



website: www.AffinityRealEstate.com | email: info@affinityrealestate.com | office: 218-237-3333 | fax:218-237-3377

Affinity
REAL ESTATE INC

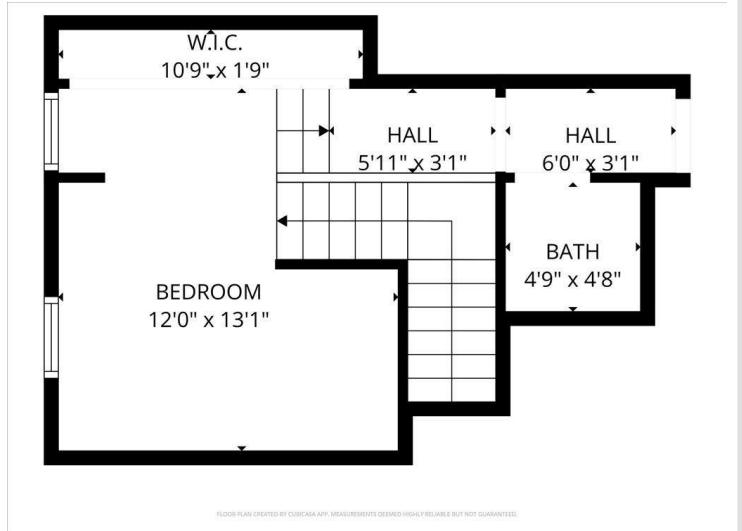
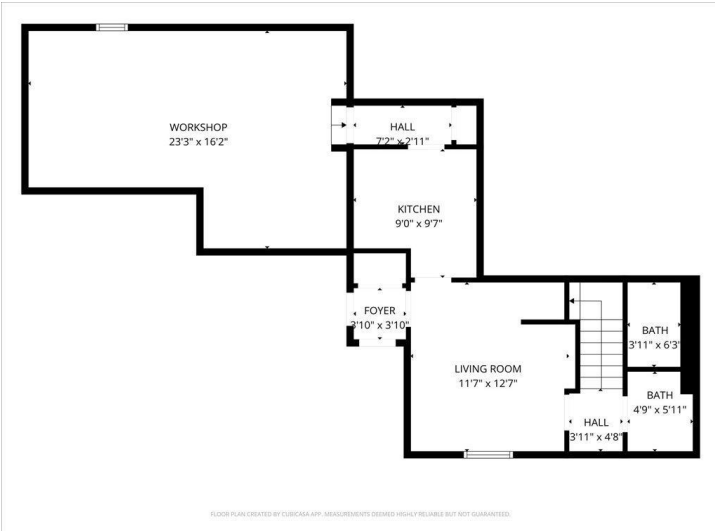
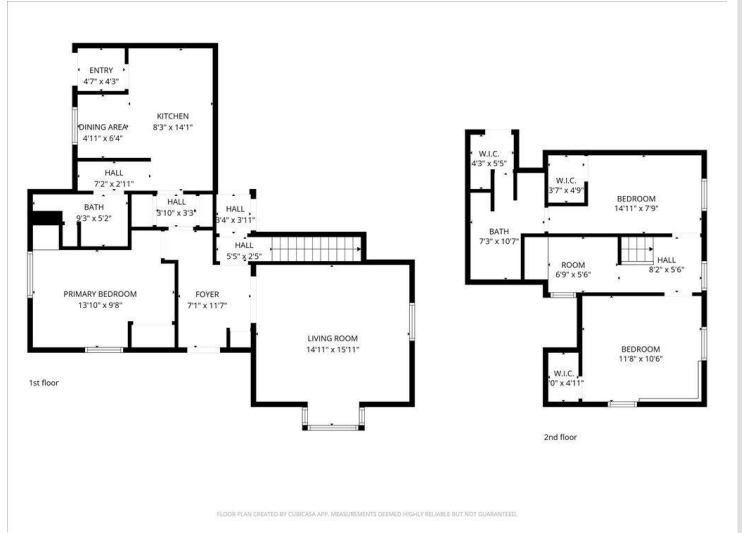
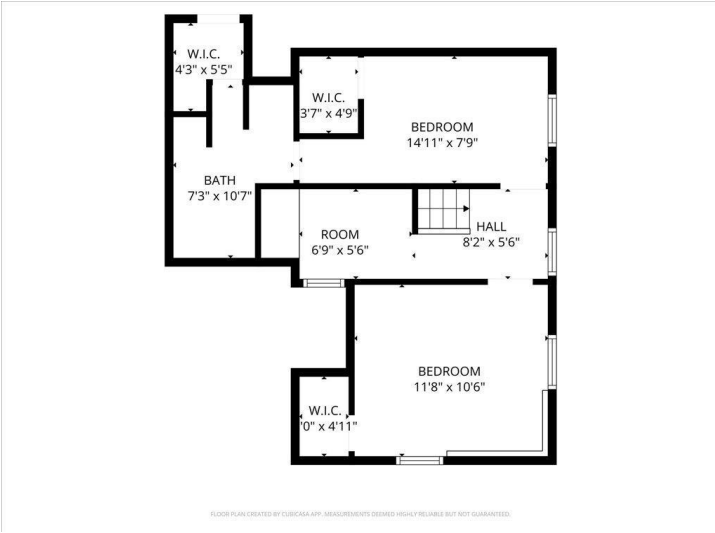
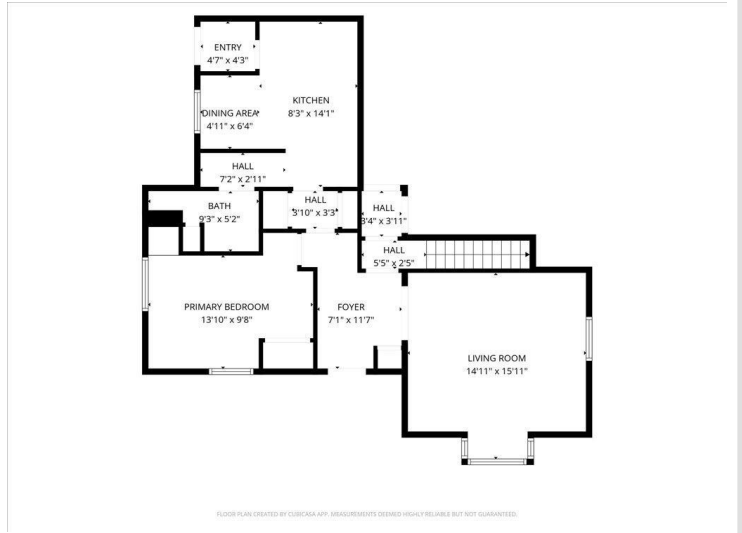
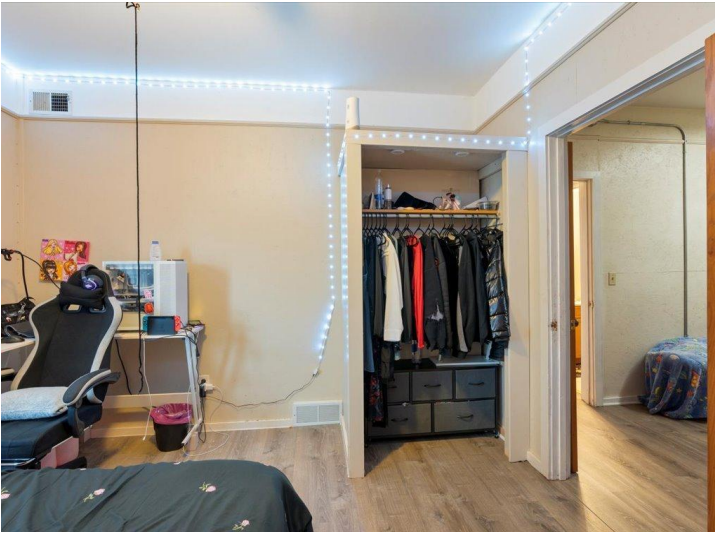
\$220,000
MLS 7046334 Residential
Income
297 US 10
Motley MN 56466



website: www.AffinityRealEstate.com | email: info@affinityrealestate.com | office: 218-237-3333 | fax:218-237-3377



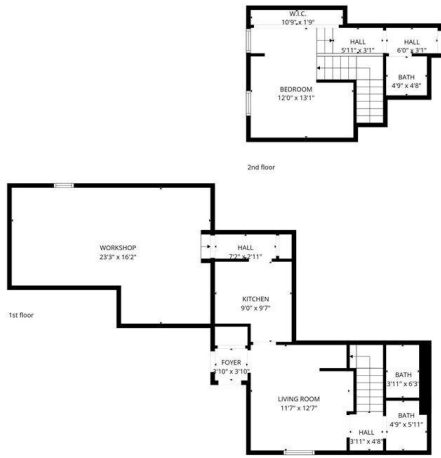
\$220,000
MLS 7046334 Residential
Income
297 US 10
Motley MN 56466



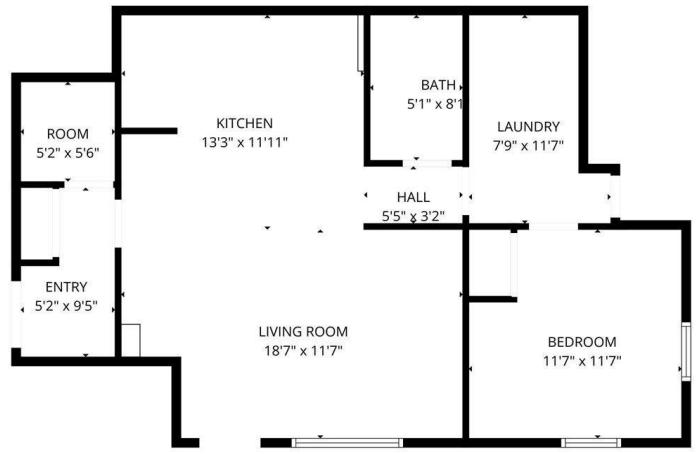
website: www.AffinityRealEstate.com | email: info@affinityrealestate.com | office: 218-237-3333 | fax: 218-237-3377



\$220,000
 MLS 7046334 Residential
 Income
 297 US 10
 Motley MN 56466



FLOOR PLAN CREATED BY CUBICSCAPE APP. MEASUREMENTS DEEMED HIGHLY RELIABLE BUT NOT GUARANTEED.



FLOOR PLAN CREATED BY CUBICSCAPE APP. MEASUREMENTS DEEMED HIGHLY RELIABLE BUT NOT GUARANTEED.

website: www.AffinityRealEstate.com | email: info@affinityrealestate.com | office: 218-237-3333 | fax:218-237-3377



\$220,000
 MLS 7046334 Residential
 Income
 297 US 10
 Motley MN 56466