



MLS 7046529 Residential

\$175,000

1,042 sq ft
2 bedrooms
1 baths

410 Saint Charles Avenue
Fergus Falls MN 56537

Status: Active

Description:

Charming, turn-key 2-bedroom, 1-bath home offering comfort, convenience, and room to grow! This cozy residence features main floor laundry for easy living and a functional layout perfect for everyday life. Enjoy a spacious backyard on a quiet street—ideal for relaxing, entertaining, or gardening. Step out onto the large back deck complete with a sun shade, perfect for summer gatherings, or unwind on the inviting front patio with your morning coffee. Additional highlights include a single attached garage, a handy storage shed for all your extras, and a full basement ready for your finishing touches—offering great potential to expand your living space. A wonderful opportunity for first-time buyers, downsizers, or anyone looking for a move-in-ready home in a peaceful setting!

Additional Details:

Year Built	1955
Lot Acres	0.224
Lot Dimensions	65 x 150
Garage Stalls	1
School District	1944
Taxes	\$1,608
Taxes with Assessments	\$1,608
Tax Year	2025

Additional Features:

Basement: Full, Concrete, Storage Space, Sump Pump, Unfinished **Fuel:** Array **Garage:** 1 **Heat:** Forced Air **Sewer:** City Sewer/Connected
Water: City Water/Connected **Air Conditioning:** Central Air

Driving Directions:

From Pebble Lake Road/E Vernon Ave. Turn south onto S Sheridan St travel to E St Charles Ave and turn right. Home will be on your left.



Listed By:
Trilogy Real Estate

Affinity Real Estate Inc. participates in the Regional Multiple Listing Service of Minnesota, Inc Broker Reciprocity (sm) program, allowing us to display other broker's listings on our website. All properties are subject to prior sale, change or withdrawal.



Call Affinity Real Estate

218-237-3333

info@affinityrealestate.com



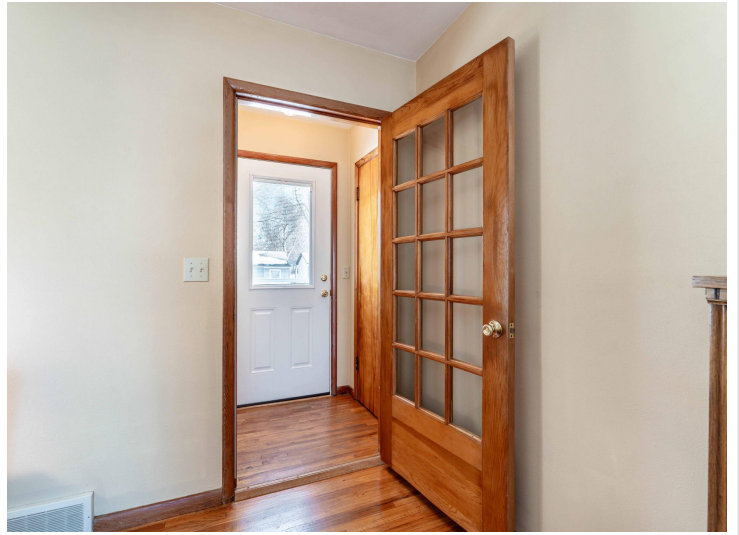
Affinity Real Estate - 600 Park Avenue South - Park Rapids MN 56470



website: www.AffinityRealEstate.com | email: info@affinityrealestate.com | office: 218-237-3333 | fax:218-237-3377

Affinity
REAL ESTATE INC

\$175,000
MLS 7046529 Residential
410 Saint Charles Avenue
Fergus Falls MN 56537



website: www.AffinityRealEstate.com | email: info@affinityrealestate.com | office: 218-237-3333 | fax:218-237-3377

Affinity
REAL ESTATE INC

\$175,000
MLS 7046529 Residential
410 Saint Charles Avenue
Fergus Falls MN 56537



website: www.AffinityRealEstate.com | email: info@affinityrealestate.com | office: 218-237-3333 | fax:218-237-3377



\$175,000
MLS 7046529 Residential
410 Saint Charles Avenue
Fergus Falls MN 56537



website: www.AffinityRealEstate.com | email: info@affinityrealestate.com | office: 218-237-3333 | fax:218-237-3377

Affinity
REAL ESTATE INC

\$175,000
MLS 7046529 Residential
410 Saint Charles Avenue
Fergus Falls MN 56537



website: www.AffinityRealEstate.com | email: info@affinityrealestate.com | office: 218-237-3333 | fax: 218-237-3377

Affinity
REAL ESTATE INC

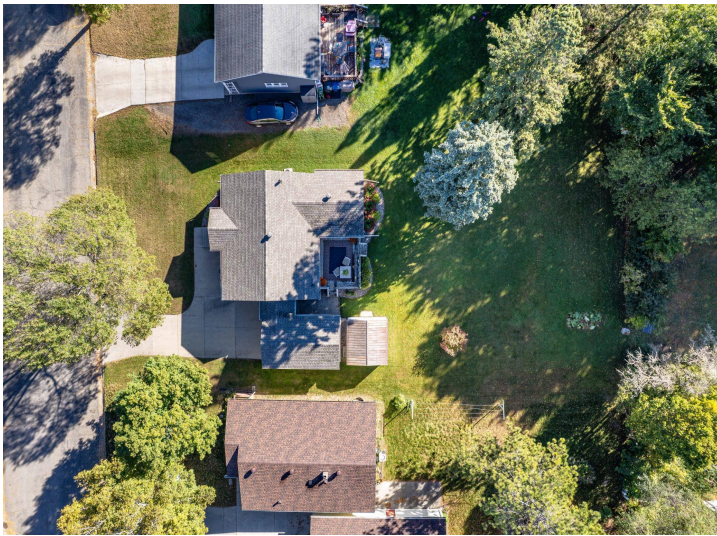
\$175,000
MLS 7046529 Residential
410 Saint Charles Avenue
Fergus Falls MN 56537



website: www.AffinityRealEstate.com | email: info@affinityrealestate.com | office: 218-237-3333 | fax:218-237-3377



\$175,000
MLS 7046529 Residential
410 Saint Charles Avenue
Fergus Falls MN 56537



website: www.AffinityRealEstate.com | email: info@affinityrealestate.com | office: 218-237-3333 | fax:218-237-3377



\$175,000
MLS 7046529 Residential
410 Saint Charles Avenue
Fergus Falls MN 56537



website: www.AffinityRealEstate.com | email: info@affinityrealestate.com | office: 218-237-3333 | fax:218-237-3377



\$175,000
MLS 7046529 Residential
410 Saint Charles Avenue
Fergus Falls MN 56537



website: www.AffinityRealEstate.com | email: info@affinityrealestate.com | office: 218-237-3333 | fax:218-237-3377



\$175,000
MLS 7046529 Residential
410 Saint Charles Avenue
Fergus Falls MN 56537



website: www.AffinityRealEstate.com | email: info@affinityrealestate.com | office: 218-237-3333 | fax:218-237-3377



\$175,000
MLS 7046529 Residential
410 Saint Charles Avenue
Fergus Falls MN 56537