



MLS 7046614 Residential

\$299,900

1,568 sq ft
1 bedrooms
2 baths

38922 County 45
LaPorte MN 56461

Status: Active

Description:

Escape to privacy and space with this country home set on 37+ acres of beautifully maintained land. The spacious main level offers comfortable living, highlighted by a main-level primary bedroom suite for added convenience. Enjoy miles of mowed trails winding through a stunning mix of mature oak and pine forest—perfect for hunting, hiking, or simply taking in the peaceful surroundings. Located on a quiet paved road just minutes from LaPorte and an easy 20-minute drive to Bemidji or Walker, this property offers the best of rural living with access to nearby amenities. The unfinished walkout basement includes a roughed-in 3/4 bath and is set up for two additional bedrooms and a family room, the septic is sized for a 3 bedroom home, providing an excellent opportunity to finish the space how you want and build instant equity. Ready for a home AND acreage? This just may be your next place!

Additional Details:

Year Built	1999
Lot Acres	37.9
Lot Dimensions	1320 x 1320 x irr
School District	306
Taxes	\$2,233
Taxes with Assessments	\$2,478
Tax Year	2025

Additional Features:

Basement: Block, Unfinished, Walkout **Fuel:** Electric, Propane **Heat:** Forced Air **Sewer:** Mound Septic, Private Sewer **Water:** 4-Inch Submersible, Drilled, Private, Well **Air Conditioning:** Central Air

Driving Directions:

From LaPorte take 200 east, left on 45, to property on your right.



Listed By:
Bill Hansen Realty/Longville

Affinity Real Estate Inc. participates in the Regional Multiple Listing Service of Minnesota, Inc Broker Reciprocity (sm) program, allowing us to display other broker's listings on our website. All properties are subject to prior sale, change or withdrawal.



Call Affinity Real Estate

218-237-3333

info@affinityrealestate.com



Affinity Real Estate - 600 Park Avenue South - Park Rapids MN 56470



website: www.AffinityRealEstate.com | email: info@affinityrealestate.com | office: 218-237-3333 | fax:218-237-3377



\$299,900
MLS 7046614 Residential
38922 County 45
Laporte MN 56461



website: www.AffinityRealEstate.com | email: info@affinityrealestate.com | office: 218-237-3333 | fax:218-237-3377



\$299,900
MLS 7046614 Residential
38922 County 45
Laporte MN 56461



website: www.AffinityRealEstate.com | email: info@affinityrealestate.com | office: 218-237-3333 | fax:218-237-3377

Affinity
REAL ESTATE INC

\$299,900
MLS 7046614 Residential
38922 County 45
Laporte MN 56461



website: www.AffinityRealEstate.com | email: info@affinityrealestate.com | office: 218-237-3333 | fax:218-237-3377

Affinity
REAL ESTATE INC

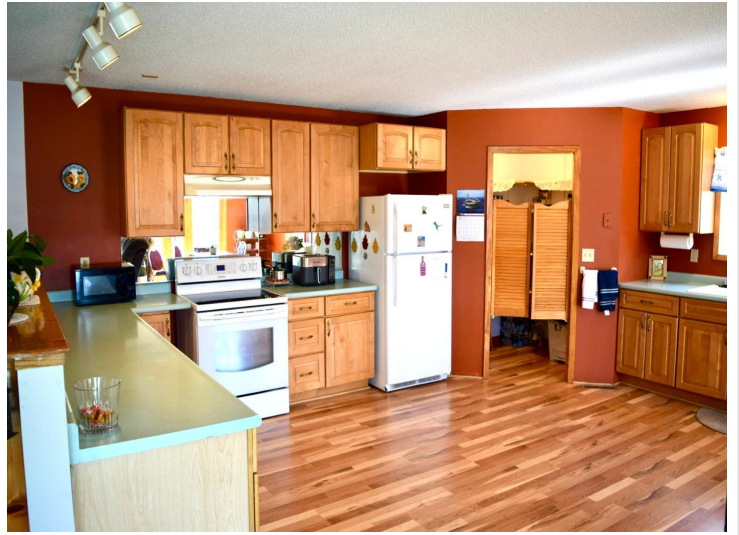
\$299,900
MLS 7046614 Residential
38922 County 45
Laporte MN 56461



website: www.AffinityRealEstate.com | email: info@affinityrealestate.com | office: 218-237-3333 | fax:218-237-3377

Affinity
REAL ESTATE INC

\$299,900
MLS 7046614 Residential
38922 County 45
Laporte MN 56461



website: www.AffinityRealEstate.com | email: info@affinityrealestate.com | office: 218-237-3333 | fax:218-237-3377



\$299,900
MLS 7046614 Residential
38922 County 45
Laporte MN 56461