



MLS 7046862 Residential

**\$499,900**

1,744 sq ft  
3 bedrooms  
2 baths

35817 Moraine Drive  
Cushing MN 56443

Status: Active

**Description:**

This beautifully updated three-bedroom cabin with loft on Big Lake in Cushing offers the perfect lakeside escape - less than two hours from the Twin Cities metro. Designed for both relaxation and entertaining, the open-concept main living area features a stunning wall of windows that frame serene lake views, filling the space with natural light. A cozy wood-burning fireplace anchors the living room, while the updated kitchen blends modern convenience with classic cabin charm. Throughout the home, you'll find quintessential Minnesota cabin finishes, including warm plank ceilings with exposed beams and rich wood accents that create an inviting, up-north feel. Updates include new furnace, main-level flooring, dishwasher, stove, microwave, bathroom vanity, and fans/light fixtures - all in 2023. New gutters in 2025. Outdoor living is just as impressive, with a full-length lakeside deck, a walkout-level patio, and a spacious family room below—all perfectly positioned to take in the peaceful surroundings and water views. The landscaped yard gently slopes down to the shoreline, offering easy lake access while maintaining privacy. A detached two-stall garage and expansive, level front yard provides ample space for storage, recreation, and guests. Dock included!! Whether you're looking for a weekend retreat or a year-round getaway, this move-in-ready property is ideal for enjoying everything Minnesota's four seasons have to offer.

**Additional Details:**

Year Built	1975
Lot Acres	0.48
Lot Dimensions	100x183x115x216
Garage Stalls	2
School District	2268
Taxes	\$5,114
Taxes with Assessments	\$5,172
Tax Year	2026

**Additional Features:**

**Fuel:** Array **Heat:** Baseboard, Forced Air, Fireplace(s)

**Driving Directions:**

From Highway 10 in Cushing go west on 260th Street/Todd County Drive  
Listed By:  
Edina Realty, Inc.



Affinity Real Estate Inc. participates in the Regional Multiple Listing Service of Minnesota, Inc Broker Reciprocity (sm) program, allowing us to display other broker's listings on our website. All properties are subject to prior sale, change or withdrawal.



Call Affinity Real Estate  
35817 Moraine Drive and follow to the property on the

**218-237-3333**

[info@affinityrealestate.com](mailto:info@affinityrealestate.com)



Affinity Real Estate - 600 Park Avenue South - Park Rapids MN 56470



website: [www.AffinityRealEstate.com](http://www.AffinityRealEstate.com) | email: [info@affinityrealestate.com](mailto:info@affinityrealestate.com) | office: 218-237-3333 | fax:218-237-3377



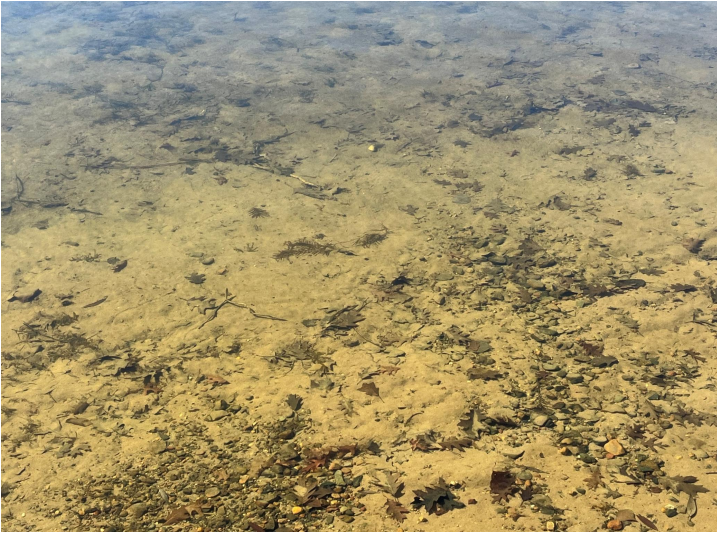
**\$499,900**  
MLS 7046862 Residential  
35817 Moraine Drive  
Cushing MN 56443



website: [www.AffinityRealEstate.com](http://www.AffinityRealEstate.com) | email: [info@affinityrealestate.com](mailto:info@affinityrealestate.com) | office: 218-237-3333 | fax: 218-237-3377

**Affinity**  
REAL ESTATE INC

**\$499,900**  
MLS 7046862 Residential  
35817 Moraine Drive  
Cushing MN 56443



website: [www.AffinityRealEstate.com](http://www.AffinityRealEstate.com) | email: [info@affinityrealestate.com](mailto:info@affinityrealestate.com) | office: 218-237-3333 | fax:218-237-3377

**Affinity**  
REAL ESTATE INC

**\$499,900**  
MLS 7046862 Residential  
35817 Moraine Drive  
Cushing MN 56443



website: [www.AffinityRealEstate.com](http://www.AffinityRealEstate.com) | email: [info@affinityrealestate.com](mailto:info@affinityrealestate.com) | office: 218-237-3333 | fax:218-237-3377



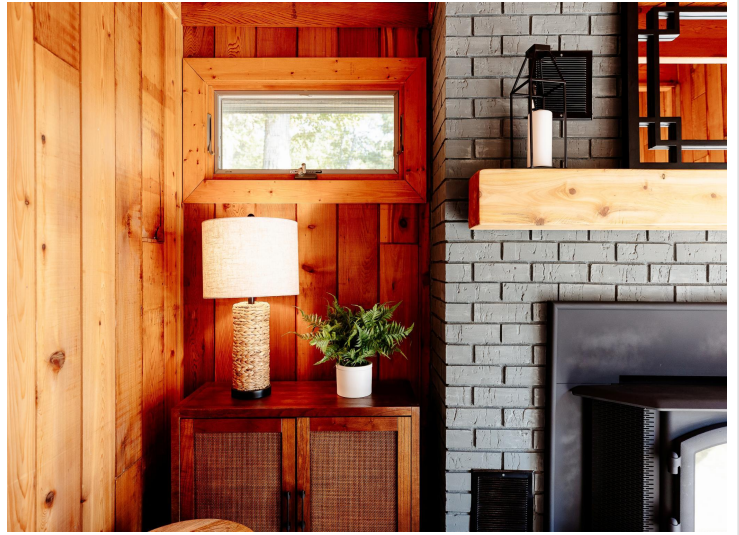
**\$499,900**  
MLS 7046862 Residential  
35817 Moraine Drive  
Cushing MN 56443



website: [www.AffinityRealEstate.com](http://www.AffinityRealEstate.com) | email: [info@affinityrealestate.com](mailto:info@affinityrealestate.com) | office: 218-237-3333 | fax: 218-237-3377

**Affinity**  
REAL ESTATE INC

**\$499,900**  
MLS 7046862 Residential  
35817 Moraine Drive  
Cushing MN 56443



website: [www.AffinityRealEstate.com](http://www.AffinityRealEstate.com) | email: [info@affinityrealestate.com](mailto:info@affinityrealestate.com) | office: 218-237-3333 | fax: 218-237-3377

**Affinity**  
REAL ESTATE INC

**\$499,900**  
MLS 7046862 Residential  
35817 Moraine Drive  
Cushing MN 56443



website: [www.AffinityRealEstate.com](http://www.AffinityRealEstate.com) | email: [info@affinityrealestate.com](mailto:info@affinityrealestate.com) | office: 218-237-3333 | fax: 218-237-3377

**Affinity**  
REAL ESTATE INC

**\$499,900**  
MLS 7046862 Residential  
35817 Moraine Drive  
Cushing MN 56443



website: [www.AffinityRealEstate.com](http://www.AffinityRealEstate.com) | email: [info@affinityrealestate.com](mailto:info@affinityrealestate.com) | office: 218-237-3333 | fax:218-237-3377

**Affinity**  
REAL ESTATE INC

**\$499,900**  
MLS 7046862 Residential  
35817 Moraine Drive  
Cushing MN 56443



website: [www.AffinityRealEstate.com](http://www.AffinityRealEstate.com) | email: [info@affinityrealestate.com](mailto:info@affinityrealestate.com) | office: 218-237-3333 | fax:218-237-3377

**Affinity**  
REAL ESTATE INC

**\$499,900**  
MLS 7046862 Residential  
35817 Moraine Drive  
Cushing MN 56443



website: [www.AffinityRealEstate.com](http://www.AffinityRealEstate.com) | email: [info@affinityrealestate.com](mailto:info@affinityrealestate.com) | office: 218-237-3333 | fax:218-237-3377

**Affinity**  
REAL ESTATE INC

**\$499,900**  
MLS 7046862 Residential  
35817 Moraine Drive  
Cushing MN 56443



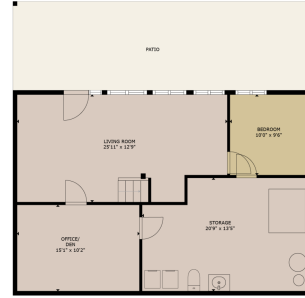


FLOOR 2

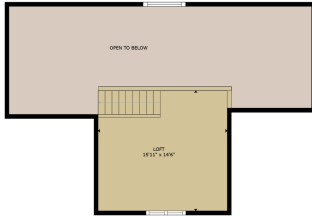
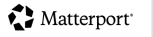
GROSS INTERNAL AREA  
 FLOOR 1: 865 sq. ft. FLOOR 2: 762 sq. ft.  
 FLOOR 3: 852 sq. ft. TOTAL: 2,479 sq. ft.  
 EXCLUDED AREA: BALCONY: 192 sq. ft.  
 SIZES AND DIMENSIONS ARE APPROXIMATE, ACTUAL MAY VARY.



FLOOR 1



GROSS INTERNAL AREA  
 FLOOR 1: 865 sq. ft. FLOOR 2: 762 sq. ft.  
 FLOOR 3: 852 sq. ft. TOTAL: 2,479 sq. ft.  
 EXCLUDED AREA: BALCONY: 192 sq. ft.  
 SIZES AND DIMENSIONS ARE APPROXIMATE, ACTUAL MAY VARY.



FLOOR 3

GROSS INTERNAL AREA  
 FLOOR 1: 865 sq. ft. FLOOR 2: 762 sq. ft.  
 FLOOR 3: 852 sq. ft. TOTAL: 2,479 sq. ft.  
 EXCLUDED AREA: BALCONY: 192 sq. ft.  
 SIZES AND DIMENSIONS ARE APPROXIMATE, ACTUAL MAY VARY.



website: [www.AffinityRealEstate.com](http://www.AffinityRealEstate.com) | email: [info@affinityrealestate.com](mailto:info@affinityrealestate.com) | office: 218-237-3333 | fax: 218-237-3377



**\$499,900**  
 MLS 7046862 Residential  
 35817 Moraine Drive  
 Cushing MN 56443