



MLS 7046929 Residential

\$249,900

1,124 sq ft
2 bedrooms
1 baths

207 Lana Court
Fergus Falls MN 56537

Status: Active

Description:

Enjoy effortless single level living in this updated 2 bedroom slab-on-grade home on the desirable west side of Fergus Falls. Perfectly located with quick interstate access and close to restaurants and shopping, this home combines convenience with comfort. Step inside to open living spaces with vaulted ceilings, an eat-in kitchen that flows into the dining room, and sliding doors leading to a private patio that is ideal for morning coffee or evening relaxation. Recently updated with new kitchen appliances, fresh paint, and new flooring throughout, this home is move-in ready. Enjoy the efficiency of in floor heat in the winter and mini-split cooling in the summer, plus the practicality of an attached double stall garage. A modern, low-maintenance lifestyle awaits. Schedule your showing today.

Additional Details:

| | |
|------------------------|---------|
| Year Built | 2002 |
| Lot Acres | 0.1 |
| Lot Dimensions | 65x67 |
| Garage Stalls | 2 |
| School District | 1944 |
| Taxes | \$2,298 |
| Taxes with Assessments | \$2,298 |
| Tax Year | 2025 |

Additional Features:

Basement: None **Fuel:** Array **Garage:** 2 **Heat:** Boiler, Ductless Mini-Split, In-Floor Heating **Sewer:** City Sewer/Connected **Water:** City Water/Connected **Air Conditioning:** Ductless Mini-Split

Driving Directions:

Head W at the 1st cross street onto W Lincoln Ave and turn S onto Tower Rd S. Turn W onto Ottertail Dr and finally, head N onto Lana Ct.



Listed By:
Keller Williams Realty Professionals

Affinity Real Estate Inc. participates in the Regional Multiple Listing Service of Minnesota, Inc Broker Reciprocity (sm) program, allowing us to display other broker's listings on our website. All properties are subject to prior sale, change or withdrawal.



Call Affinity Real Estate

218-237-3333

info@affinityrealestate.com



Affinity Real Estate - 600 Park Avenue South - Park Rapids MN 56470



website: www.AffinityRealEstate.com | email: info@affinityrealestate.com | office: 218-237-3333 | fax: 218-237-3377

Affinity
REAL ESTATE INC

\$249,900
MLS 7046929 Residential
207 Lana Court
Fergus Falls MN 56537



website: www.AffinityRealEstate.com | email: info@affinityrealestate.com | office: 218-237-3333 | fax:218-237-3377

Affinity
REAL ESTATE INC

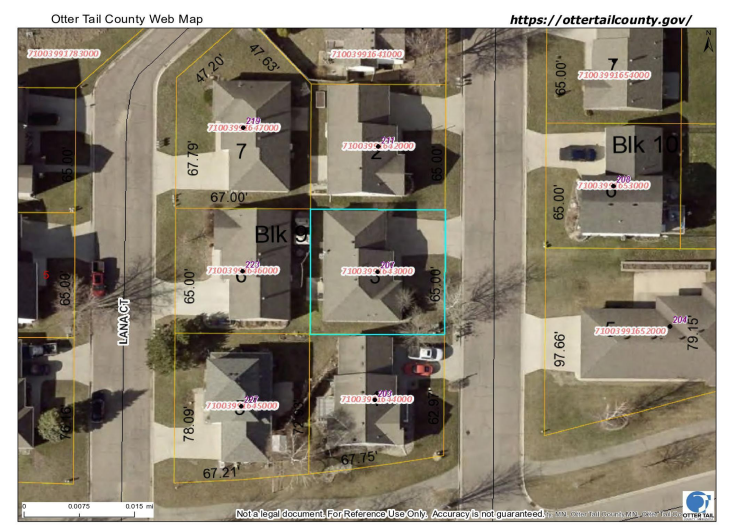
\$249,900
MLS 7046929 Residential
207 Lana Court
Fergus Falls MN 56537



website: www.AffinityRealEstate.com | email: info@affinityrealestate.com | office: 218-237-3333 | fax:218-237-3377

Affinity
REAL ESTATE INC

\$249,900
MLS 7046929 Residential
207 Lana Court
Fergus Falls MN 56537



website: www.AffinityRealEstate.com | email: info@affinityrealestate.com | office: 218-237-3333 | fax:218-237-3377



\$249,900
MLS 7046929 Residential
207 Lana Court
Fergus Falls MN 56537