



MLS 7047024 Residential

**\$459,900**

728 sq ft  
2 bedrooms  
1 baths

31410 Wilderness Bay Drive  
Park Rapids MN 56470

Status: Coming Soon

**Description:**

Little Mantrap Lake Cabin – First Time Offered | \$459,900. Start your spring with your own lake retreat on beautiful Little Mantrap Lake. This cozy 2-bedroom cabin sits on a stunning 1.97-acre lot with 239 feet of shoreline and a sandy beach—perfect for relaxing, swimming, and enjoying the water. The cabin features a full bathroom, stackable washer and dryer, and electric heat, making it comfortable for year-round use. It's move-in ready, whether you're looking for a weekend getaway or a full-time escape. A detached, insulated garage offers ample space for your pontoon, recreational gear, and more. Little Mantrap Lake is well known for its excellent fishing, clear water, and quiet back bays—ideal for exploring by boat or kayak. The property is also just minutes from Itasca State Park and nearby recreational trails, giving you access to hiking, biking, and outdoor adventure year-round. Don't miss this rare opportunity—first time on the market!

**Additional Details:**

Year Built	1999
Lot Acres	1.97
Lot Dimensions	239 x 228.50 x 239 x 320.60
Garage Stalls	3
School District	1384
Taxes	\$2,611
Taxes with Assessments	\$2,856
Tax Year	2025

**Additional Features:**

**Fuel:** Array **Heat:** Space Heater

**Driving Directions:**

From Highway 34/71 intersection in Park Rapids, head N on 71 14.3 miles and turn Left on CR 42 Boot Lake Drive. Continue .9 miles and turn R on Wilderness Bay Road and stay on main road 1.9 miles and property will be on your right.



Listed By:  
Affinity Real Estate Inc.

Affinity Real Estate Inc. participates in the Regional Multiple Listing Service of Minnesota, Inc Broker Reciprocity (sm) program, allowing us to display other broker's listings on our website. All properties are subject to prior sale, change or withdrawal.



**Call Affinity Real Estate**

**218-237-3333**

**info@affinityrealestate.com**



**Affinity Real Estate - 600 Park Avenue South - Park Rapids MN 56470**



website: [www.AffinityRealEstate.com](http://www.AffinityRealEstate.com) | email: [info@affinityrealestate.com](mailto:info@affinityrealestate.com) | office: 218-237-3333 | fax: 218-237-3377

**Affinity**  
REAL ESTATE INC

**\$459,900**  
MLS 7047024 Residential  
31410 Wilderness Bay Drive  
Park Rapids MN 56470



website: [www.AffinityRealEstate.com](http://www.AffinityRealEstate.com) | email: [info@affinityrealestate.com](mailto:info@affinityrealestate.com) | office: 218-237-3333 | fax: 218-237-3377

**Affinity**  
REAL ESTATE INC

**\$459,900**  
MLS 7047024 Residential  
31410 Wilderness Bay Drive  
Park Rapids MN 56470



website: [www.AffinityRealEstate.com](http://www.AffinityRealEstate.com) | email: [info@affinityrealestate.com](mailto:info@affinityrealestate.com) | office: 218-237-3333 | fax:218-237-3377

**Affinity**  
REAL ESTATE INC

**\$459,900**  
MLS 7047024 Residential  
31410 Wilderness Bay Drive  
Park Rapids MN 56470



website: [www.AffinityRealEstate.com](http://www.AffinityRealEstate.com) | email: [info@affinityrealestate.com](mailto:info@affinityrealestate.com) | office: 218-237-3333 | fax:218-237-3377



**\$459,900**  
MLS 7047024 Residential  
31410 Wilderness Bay Drive  
Park Rapids MN 56470



website: [www.AffinityRealEstate.com](http://www.AffinityRealEstate.com) | email: [info@affinityrealestate.com](mailto:info@affinityrealestate.com) | office: 218-237-3333 | fax:218-237-3377



**\$459,900**  
MLS 7047024 Residential  
31410 Wilderness Bay Drive  
Park Rapids MN 56470



website: [www.AffinityRealEstate.com](http://www.AffinityRealEstate.com) | email: [info@affinityrealestate.com](mailto:info@affinityrealestate.com) | office: 218-237-3333 | fax:218-237-3377



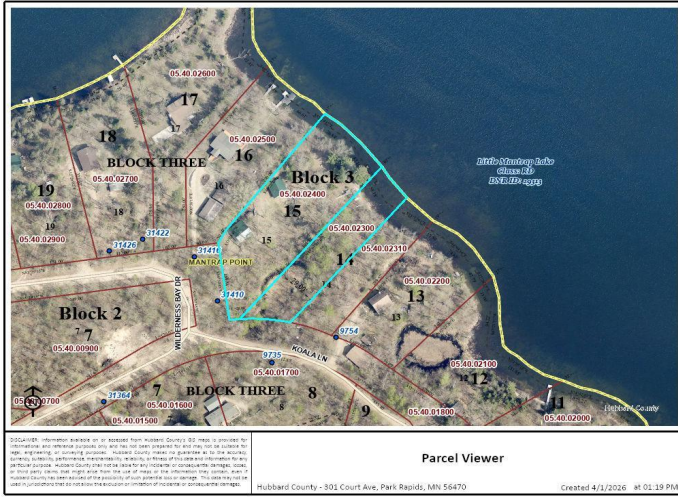
**\$459,900**  
MLS 7047024 Residential  
31410 Wilderness Bay Drive  
Park Rapids MN 56470



website: [www.AffinityRealEstate.com](http://www.AffinityRealEstate.com) | email: [info@affinityrealestate.com](mailto:info@affinityrealestate.com) | office: 218-237-3333 | fax:218-237-3377



**\$459,900**  
MLS 7047024 Residential  
31410 Wilderness Bay Drive  
Park Rapids MN 56470



website: [www.AffinityRealEstate.com](http://www.AffinityRealEstate.com) | email: [info@affinityrealestate.com](mailto:info@affinityrealestate.com) | office: 218-237-3333 | fax:218-237-3377



**\$459,900**  
 MLS 7047024 Residential  
 31410 Wilderness Bay Drive  
 Park Rapids MN 56470