



MLS 7047190 Residential

\$479,000

1,429 sq ft
3 bedrooms
2 baths

34473 County Highway 143
Bluffton MN 56518

Status: Active

Description:

Escape to the perfect blend of productivity and peaceful country living with this exceptional rural property spanning nearly 80 acres of prime land. A versatile mix of tillable ground, pasture, and excellent hunting habitat creates endless opportunities for farming, livestock, and recreation.

The well-equipped farmstead features three outbuildings, including a newly designed calving barn, a spacious machine shed, and a brand new corral with head chute—designed for efficient cattle handling. A newly installed well setup provides reliable water access for livestock.

Inside, the home offers a balance of rustic charm and modern updates. The beautifully renovated kitchen showcases stainless steel appliances and handcrafted hickory cabinetry, creating a warm and functional centerpiece. The main floor includes a convenient primary bedroom, laundry hookups, and an updated tiled bathroom. Upstairs, you'll find two additional bedrooms and a quarter bath, offering comfortable space for family or guests.

Whether you're expanding a cattle operation, starting a horse property, or simply seeking privacy and wide-open space, this property is ready to meet your needs.

Additional Details:

| | |
|------------------------|-----------|
| Year Built | 1925 |
| Lot Acres | 74.97 |
| Lot Dimensions | 2408x1337 |
| Garage Stalls | 2 |
| School District | 1053 |
| Taxes | \$828 |
| Taxes with Assessments | \$828 |
| Tax Year | 2025 |

Additional Features:

Basement: Unfinished **Fuel:** Array **Garage:** 2 **Heat:** Boiler **Sewer:** Private Sewer **Water:** Well **Air Conditioning:** Window Unit(s)

Driving Directions:

West of Bluffton on US Hwy 10 to CO RD 143; South on 143 to property.



Listed By:
Centennial Realty

Affinity Real Estate Inc. participates in the Regional Multiple Listing Service of Minnesota, Inc Broker Reciprocity (sm) program, allowing us to display other broker's listings on our website. All properties are subject to prior sale, change or withdrawal.



Call Affinity Real Estate

218-237-3333

info@affinityrealestate.com



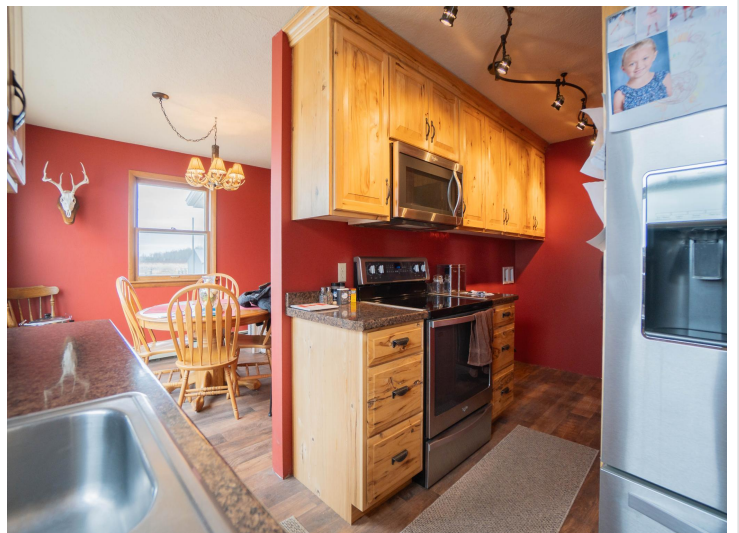
Affinity Real Estate - 600 Park Avenue South - Park Rapids MN 56470



website: www.AffinityRealEstate.com | email: info@affinityrealestate.com | office: 218-237-3333 | fax:218-237-3377

Affinity
REAL ESTATE INC

\$479,000
MLS 7047190 Residential
34473 County Highway 143
Bluffton MN 56518



website: www.AffinityRealEstate.com | email: info@affinityrealestate.com | office: 218-237-3333 | fax:218-237-3377



\$479,000
MLS 7047190 Residential
34473 County Highway 143
Bluffton MN 56518



website: www.AffinityRealEstate.com | email: info@affinityrealestate.com | office: 218-237-3333 | fax: 218-237-3377

Affinity
REAL ESTATE INC

\$479,000
MLS 7047190 Residential
34473 County Highway 143
Bluffton MN 56518



website: www.AffinityRealEstate.com | email: info@affinityrealestate.com | office: 218-237-3333 | fax:218-237-3377

Affinity
REAL ESTATE INC

\$479,000
MLS 7047190 Residential
34473 County Highway 143
Bluffton MN 56518



website: www.AffinityRealEstate.com | email: info@affinityrealestate.com | office: 218-237-3333 | fax:218-237-3377

Affinity
REAL ESTATE INC

\$479,000
MLS 7047190 Residential
34473 County Highway 143
Bluffton MN 56518



website: www.AffinityRealEstate.com | email: info@affinityrealestate.com | office: 218-237-3333 | fax:218-237-3377

Affinity
REAL ESTATE INC

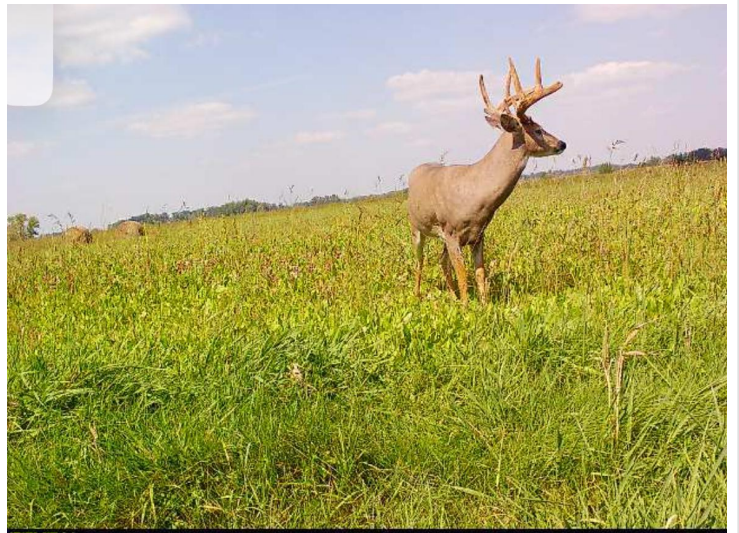
\$479,000
MLS 7047190 Residential
34473 County Highway 143
Bluffton MN 56518



website: www.AffinityRealEstate.com | email: info@affinityrealestate.com | office: 218-237-3333 | fax:218-237-3377



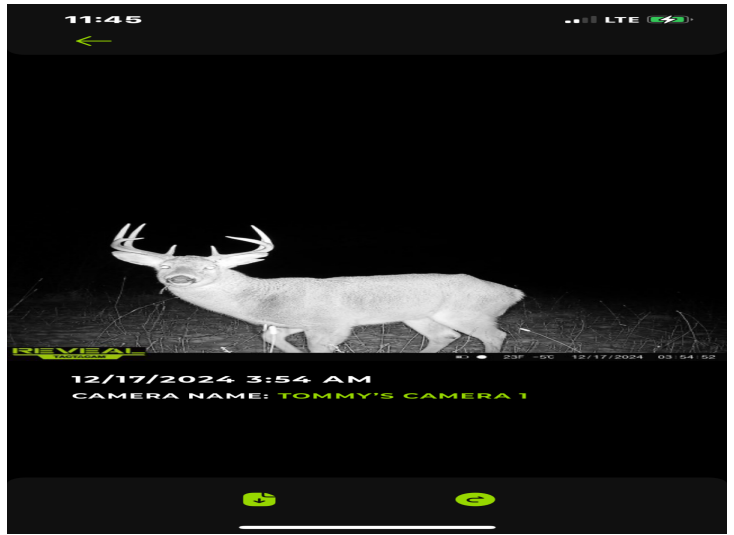
\$479,000
MLS 7047190 Residential
34473 County Highway 143
Bluffton MN 56518



website: www.AffinityRealEstate.com | email: info@affinityrealestate.com | office: 218-237-3333 | fax:218-237-3377

Affinity
REAL ESTATE INC

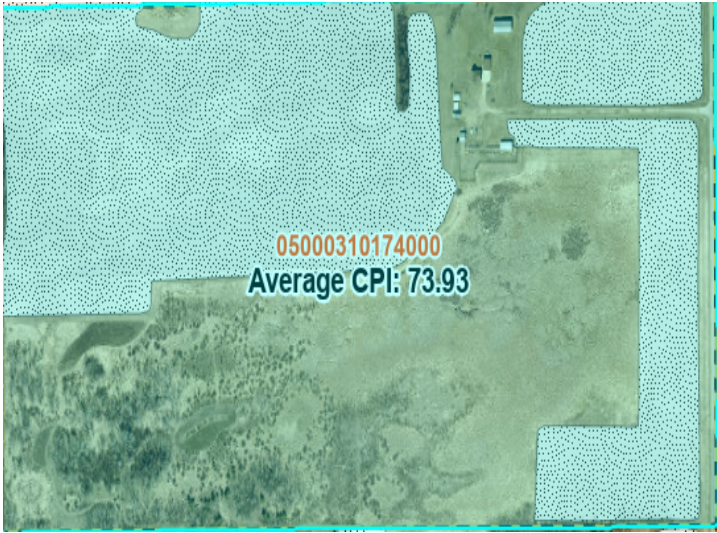
\$479,000
MLS 7047190 Residential
34473 County Highway 143
Bluffton MN 56518



website: www.AffinityRealEstate.com | email: info@affinityrealestate.com | office: 218-237-3333 | fax:218-237-3377



\$479,000
MLS 7047190 Residential
34473 County Highway 143
Bluffton MN 56518



website: www.AffinityRealEstate.com | email: info@affinityrealestate.com | office: 218-237-3333 | fax:218-237-3377



\$479,000
MLS 7047190 Residential
34473 County Highway 143
Bluffton MN 56518