



MLS 7047258 Land

**\$44,900**

2.01 Acres  
Finished Lot(s)

21 Lainey Lane  
Erskine MN 56535

Status: Active



**Description:**

Discover this beautiful 2 acre residential lot located right next to Union Lake and its public access. With 20 lots available, this is a rare chance to build your dream home, shop, shed, or barndominium in a peaceful, lake-adjacent setting. These fully developed and platted lots already have electricity and high-speed internet brought to the addition. Each spacious parcel offers plenty of room for a private well and septic system, giving you the freedom to create your ideal country retreat.

Enjoy the perfect blend of rural charm and lakeside convenience — just minutes from Union Lake’s public landing, boating, fishing, and recreation, while still offering the privacy of larger acreage. Ready for your vision. Don’t miss this exceptional opportunity!

**Additional Details:**

Lot Acres	2.01
Lot Dimensions	87369
School District	1196
Taxes	\$500
Taxes with Assessments	\$500
Tax Year	2025

**Additional Features:**

**Driving Directions:**

From Polk County Hwy 41 go South on Polk County Hwy 42. Subdivision is on the West side of the road. West side of Union Lake.



Listed By:  
Tru North Realty

Affinity Real Estate Inc. participates in the Regional Multiple Listing Service of Minnesota, Inc Broker Reciprocity (sm) program, allowing us to display other broker’s listings on our website. All properties are subject to prior sale, change or withdrawal.



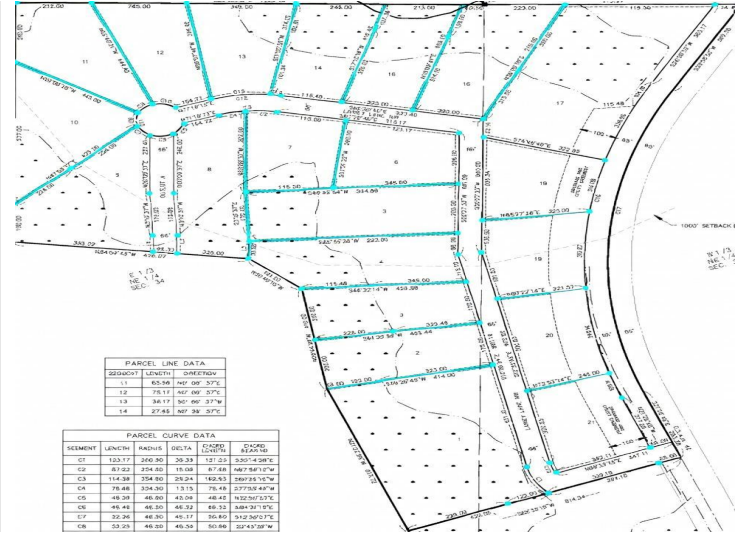
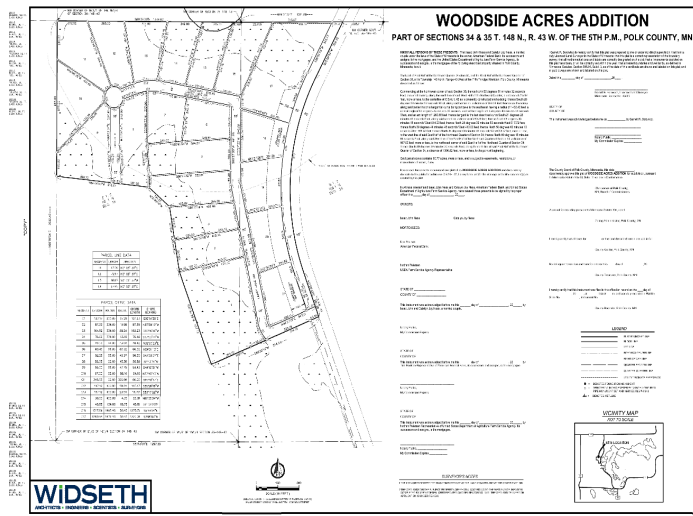
Call Affinity Real Estate

**218-237-3333**

[info@affinityrealestate.com](mailto:info@affinityrealestate.com)



Affinity Real Estate - 600 Park Avenue South - Park Rapids MN 56470



website: [www.AffinityRealEstate.com](http://www.AffinityRealEstate.com) | email: [info@affinityrealestate.com](mailto:info@affinityrealestate.com) | office: 218-237-3333 | fax: 218-237-3377



**\$44,900**  
MLS 7047258 Land  
21 Lainey Lane  
Erskine MN 56535