



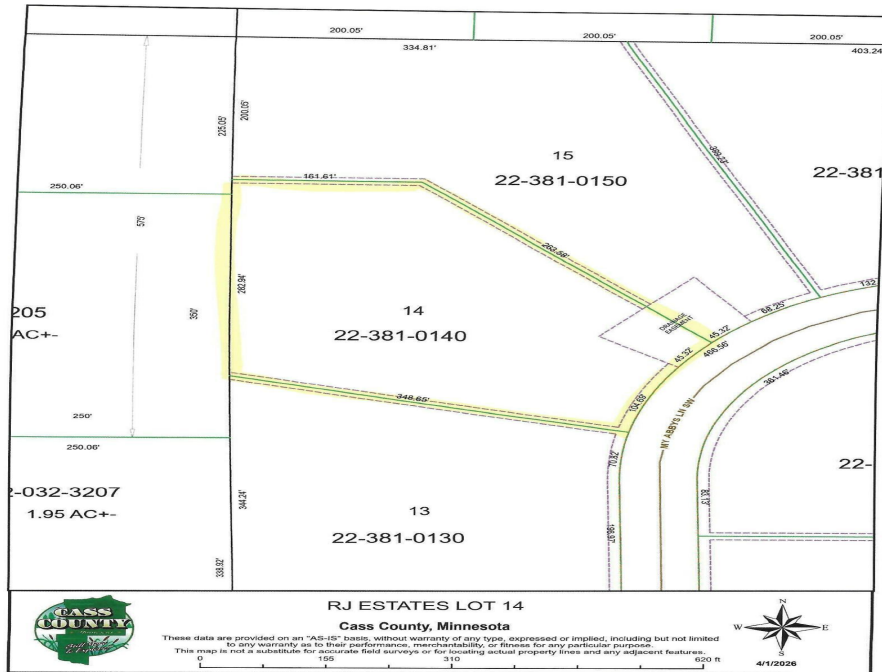
MLS 7047426 Land

**\$69,900**

2.29 Acres  
Finished Lot(s)

TBD Lot 14 My Abbys Way Lane  
Pequot Lakes MN 56472

Status: Active



**Description:**

New residential neighborhood in the heart of the Nisswa and Pequot Lakes area. Nicely wooded 2.25+ acre lots are designed to offer peace and privacy in a rural setting and a great location for your new home. New streets are now paved and ditches hydroseeded, quiet streets without through traffic. Drive through anytime! Crow Wing Power and TDS Fiber Optics, available at street. Parcels other than those in MLS may be available at this time. Close to Gull Lake, Pillsbury State forest, Pelican lake, championship golf and all the lakes area has to offer. See covenants and plat in supplements.

**Additional Details:**

Lot Acres	2.29
Lot Dimensions	150x263x161x283x348
School District	909
Taxes	\$122
Taxes with Assessments	\$122
Tax Year	2026

**Additional Features:**

**Driving Directions:**

From Nisswa, North on Hwy 371 to Left on Co Rd 29 (Wilderness Rd) to Right on Co Rd 78 (17th Ave) to Left on 72nd St SW, first left on Smiley Way to sign.



Listed By:  
Kurilla Real Estate LTD

Affinity Real Estate Inc. participates in the Regional Multiple Listing Service of Minnesota, Inc Broker Reciprocity (sm) program, allowing us to display other broker's listings on our website. All properties are subject to prior sale, change or withdrawal.



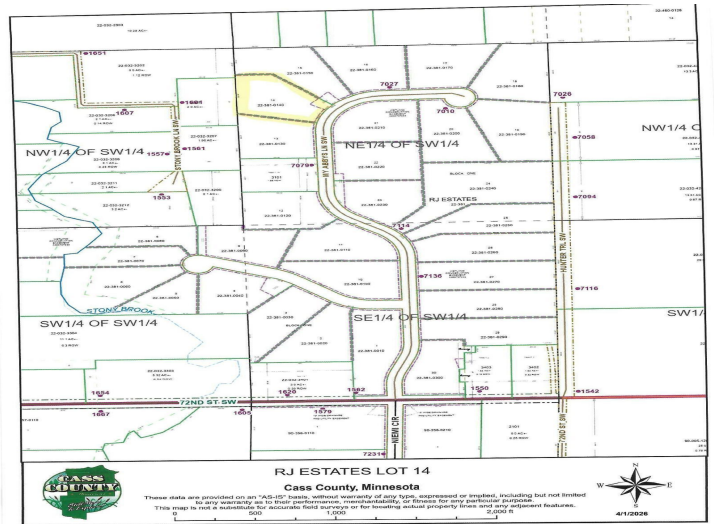
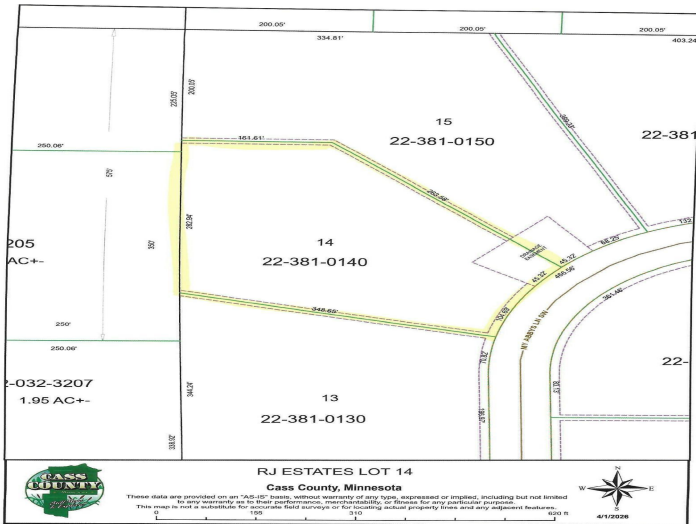
Call Affinity Real Estate

**218-237-3333**

[info@affinityrealestate.com](mailto:info@affinityrealestate.com)



Affinity Real Estate - 600 Park Avenue South - Park Rapids MN 56470



website: [www.AffinityRealEstate.com](http://www.AffinityRealEstate.com) | email: [info@affinityrealestate.com](mailto:info@affinityrealestate.com) | office: 218-237-3333 | fax: 218-237-3377



**\$69,900**  
MLS 7047426 Land  
TBD Lot 14 My Abbys Way  
Lane  
Pequot Lakes MN 56472