



MLS 7047916 Land

\$179,000

1.01 Acres
Raw Land

Lot 2 Industrial Park Road
Baxter MN 56425

Status: Active



Description:

Prime commercial sites with excellent exposure to the Hwy 371/210 intersection. These sites provide high traffic counts, excellent visibility, easy access and more. Great opportunity to build an office-service complex or to relocate your business along a major commercial corridor in a neighborhood with numerous big-box retailers, medical services and more.

Additional Details:

Lot Acres	1.01
Lot Dimensions	151x293x151x288
School District	896
Taxes	\$1,060
Taxes with Assessments	\$2,048
Tax Year	2026

Additional Features:

Driving Directions:

From the Baxter Hwy 371/210 intersection - South on Hwy 371 - East on College Road - North on Industrial Park Road - When the road turns to the East, the sites are on the North



Listed By:
Close-Converse Commercial Prop

Affinity Real Estate Inc. participates in the Regional Multiple Listing Service of Minnesota, Inc Broker Reciprocity (sm) program, allowing us to display other broker's listings on our website. All properties are subject to prior sale, change or withdrawal.



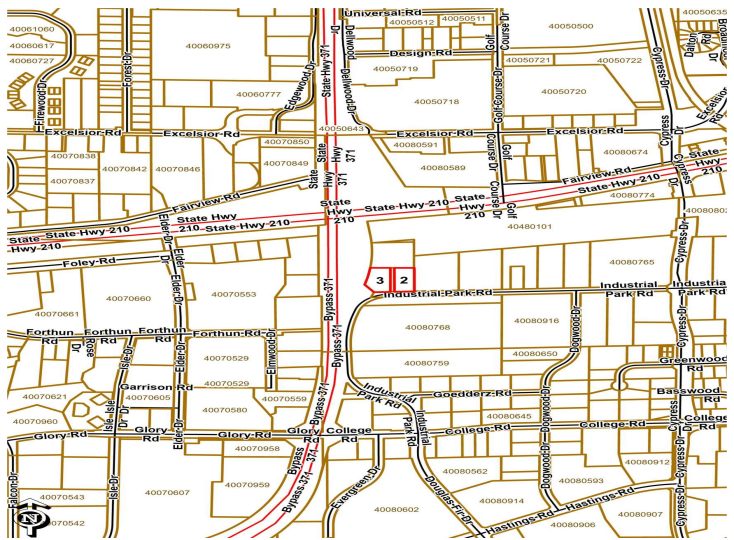
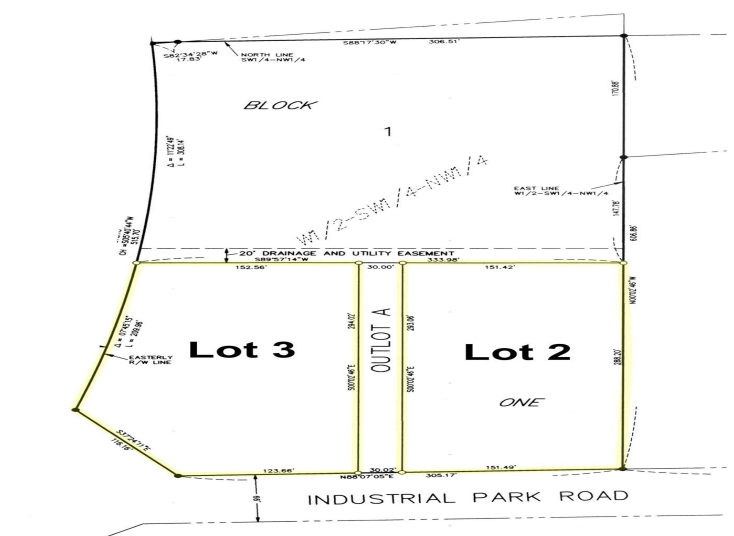
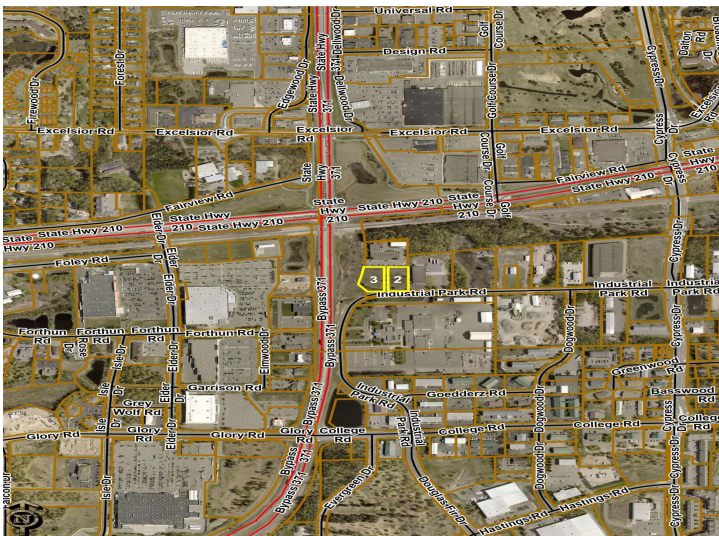
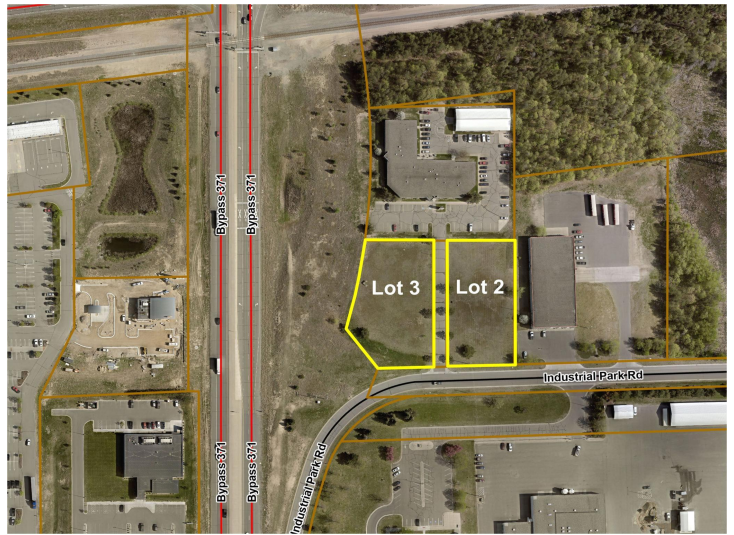
Call Affinity Real Estate

218-237-3333

info@affinityrealestate.com



Affinity Real Estate - 600 Park Avenue South - Park Rapids MN 56470



website: www.AffinityRealEstate.com | email: info@affinityrealestate.com | office: 218-237-3333 | fax: 218-237-3377



\$179,000
 MLS 7047916 Land
 Lot 2 Industrial Park Road
 Baxter MN 56425