



MLS 7048058 Land

\$139,900

236.19 Acres

Other

xxx U S Hwy 169

Aitkin MN 56469

Status: Active

Description:

This expansive and affordable 236+ acre hunting and recreational property north of Aitkin offers prime Hwy 169 frontage with easy access - just pull in, set camp, and start exploring! The SOO Line Trail runs through the corner, linking you to endless ATV and snowmobile trails. Ride south to Palisade, north to Hill City, or challenge yourself at McGregor's Axtell Technical Riding Area. Hunters take note - this land is ideal for deer, bear, turkey, and grouse, with additional access to thousands of acres of state and county land. Love to fish? Several lakes are just minutes away. Whether you're after a weekend retreat or a year-round basecamp, this large piece of affordable hunting/recreational property has everything you need for outdoor adventure. Don't wait - schedule your showing today!

Additional Details:

| | |
|------------------------|-----------|
| Lot Acres | 236.19 |
| Lot Dimensions | see legal |
| School District | 2275 |
| Taxes | \$486 |
| Taxes with Assessments | \$486 |
| Tax Year | 2026 |

Additional Features:

Driving Directions:

US Hwy 169 N out of Aitkin approx 20 miles. Property on your left (West side of Hwy) where SOO line crossed highway. Just south of where County Rd 18 goes to the East.



Listed By:
Edina Realty, Inc.

Affinity Real Estate Inc. participates in the Regional Multiple Listing Service of Minnesota, Inc Broker Reciprocity (sm) program, allowing us to display other broker's listings on our website. All properties are subject to prior sale, change or withdrawal.



Call Affinity Real Estate

218-237-3333

info@affinityrealestate.com



Affinity Real Estate - 600 Park Avenue South - Park Rapids MN 56470



website: www.AffinityRealEstate.com | email: info@affinityrealestate.com | office: 218-237-3333 | fax:218-237-3377



\$139,900
MLS 7048058 Land
xxx U S Hwy 169
Aitkin MN 56469



website: www.AffinityRealEstate.com | email: info@affinityrealestate.com | office: 218-237-3333 | fax:218-237-3377



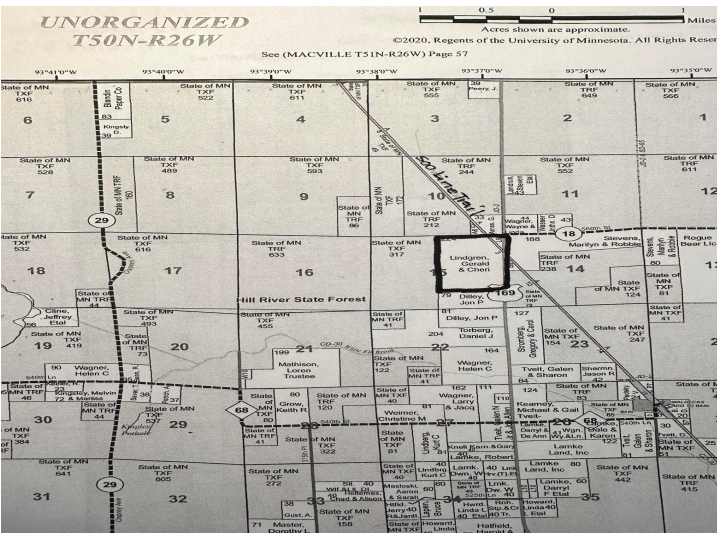
\$139,900
MLS 7048058 Land
xxx U S Hwy 169
Aitkin MN 56469



website: www.AffinityRealEstate.com | email: info@affinityrealestate.com | office: 218-237-3333 | fax:218-237-3377



\$139,900
MLS 7048058 Land
xxx U S Hwy 169
Aitkin MN 56469



website: www.AffinityRealEstate.com | email: info@affinityrealestate.com | office: 218-237-3333 | fax:218-237-3377



\$139,900
 MLS 7048058 Land
 xxx U S Hwy 169
 Aitkin MN 56469