



MLS 7048265 Land

\$159,900

2.15 Acres
Raw Land

Lot 1 454th Place
Aitkin MN 56431

Status: Active

Description:

2.15-acre lot on Birch Lake ready for your summer plans! This beautiful property offers the perfect setting to build your cabin getaway or your dream home. Enjoy peaceful and private lake living with plenty of space to relax and explore. Opportunities like this don't last — don't wait!

Additional Details:

Lot Acres	2.15
Lot Dimensions	113.84x509.72x272.93x404.23x98.35
School District	2275
Taxes	\$134
Taxes with Assessments	\$134
Tax Year	2026

Additional Features:

Driving Directions:

From Garrison, go north on 169 to west on 250th St to south on 445th Ave to west on 245th St to south on 450th Ave to west on 242nd Ln to north on 454th Pl. Property is at the end of 454th Pl. on the left.



Listed By:
RE/MAX Results - Nisswa

Affinity Real Estate Inc. participates in the Regional Multiple Listing Service of Minnesota, Inc Broker Reciprocity (sm) program, allowing us to display other broker's listings on our website. All properties are subject to prior sale, change or withdrawal.



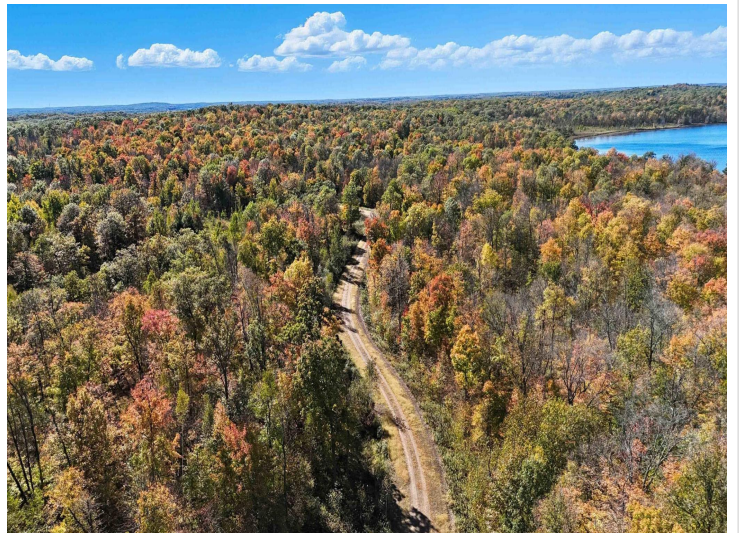
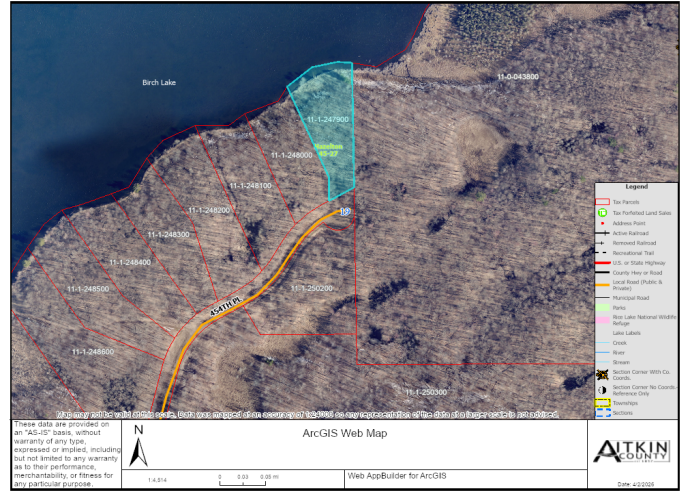
Call Affinity Real Estate

218-237-3333

info@affinityrealestate.com



Affinity Real Estate - 600 Park Avenue South - Park Rapids MN 56470



website: www.AffinityRealEstate.com | email: info@affinityrealestate.com | office: 218-237-3333 | fax: 218-237-3377

Affinity
REAL ESTATE INC

\$159,900
MLS 7048265 Land
Lot 1 454th Place
Aitkin MN 56431



website: www.AffinityRealEstate.com | email: info@affinityrealestate.com | office: 218-237-3333 | fax:218-237-3377



\$159,900
MLS 7048265 Land
Lot 1 454th Place
Aitkin MN 56431