



MLS 7048304 Residential Income

**\$344,900**

**Description:**

Flexible and well-maintained Pine River 4-unit property offering exceptional options for owner-occupants, multi-generational living, or full investment use. Set on a spacious in-town lot, this versatile property offers a rare blend of privacy, usable outdoor space, and convenient access to everyday amenities. The layout allows for multiple living strategies, including occupying part of the property while leasing other units, creating space for extended family, or maximizing income potential with all units in service. Recent seller improvements include a new deck, new kitchen flooring, remote-controlled ceiling fans, and more than \$15,000 in recent updates, giving the property a move-in ready feel while still leaving room for a new owner to personalize over time. Additional features include a 2-stall garage, storage, and a roof warranty for added peace of mind. Located near Pine River-Backus Schools, downtown shopping and dining, and the Paul Bunyan State Trail, this property combines flexibility, function, and location in one unique package. A standout opportunity for buyers seeking a property that can support a variety of lifestyle and investment goals.

**Additional Details:**

|                        |                 |
|------------------------|-----------------|
| Year Built             | 1972            |
| Lot Acres              | 1.4             |
| Lot Dimensions         | irrx326x200x270 |
| Garage Stalls          | 2               |
| School District        | 2174            |
| Taxes                  | \$4,214         |
| Taxes with Assessments | \$4,280         |
| Tax Year               | 2025            |

**Additional Features:**

**Basement:** Block, Egress Window(s), Finished **Fuel:** Electric, Natural Gas **Garage:** 2 **Heat:** Baseboard, Forced Air **Sewer:** City Sewer/Connected **Water:** City Water/Connected

**Driving Directions:**

From 371N continue on to a right on Main St. to a right on Murray Ave, property is on the right.



Listed By:  
eXp Realty

Affinity Real Estate Inc. participates in the Regional Multiple Listing Service of Minnesota, Inc Broker Reciprocity (sm) program, allowing us to display other broker's listings on our website. All properties are subject to prior sale, change or withdrawal.



**Call Affinity Real Estate**

**218-237-3333**

**info@affinityrealestate.com**



**Affinity Real Estate - 600 Park Avenue South - Park Rapids MN 56470**



website: [www.AffinityRealEstate.com](http://www.AffinityRealEstate.com) | email: [info@affinityrealestate.com](mailto:info@affinityrealestate.com) | office: 218-237-3333 | fax: 218-237-3377

**Affinity**  
REAL ESTATE INC

**\$344,900**  
MLS 7048304 Residential  
Income  
450 Murray Avenue  
Pine River MN 56474



website: [www.AffinityRealEstate.com](http://www.AffinityRealEstate.com) | email: [info@affinityrealestate.com](mailto:info@affinityrealestate.com) | office: 218-237-3333 | fax: 218-237-3377

**Affinity**  
REAL ESTATE INC

**\$344,900**  
MLS 7048304 Residential  
Income  
450 Murray Avenue  
Pine River MN 56474



website: [www.AffinityRealEstate.com](http://www.AffinityRealEstate.com) | email: [info@affinityrealestate.com](mailto:info@affinityrealestate.com) | office: 218-237-3333 | fax:218-237-3377



**\$344,900**  
MLS 7048304 Residential  
Income  
450 Murray Avenue  
Pine River MN 56474



website: [www.AffinityRealEstate.com](http://www.AffinityRealEstate.com) | email: [info@affinityrealestate.com](mailto:info@affinityrealestate.com) | office: 218-237-3333 | fax: 218-237-3377

**Affinity**  
REAL ESTATE INC

**\$344,900**  
MLS 7048304 Residential  
Income  
450 Murray Avenue  
Pine River MN 56474



website: [www.AffinityRealEstate.com](http://www.AffinityRealEstate.com) | email: [info@affinityrealestate.com](mailto:info@affinityrealestate.com) | office: 218-237-3333 | fax: 218-237-3377

**Affinity**  
REAL ESTATE INC

**\$344,900**  
MLS 7048304 Residential  
Income  
450 Murray Avenue  
Pine River MN 56474



website: [www.AffinityRealEstate.com](http://www.AffinityRealEstate.com) | email: [info@affinityrealestate.com](mailto:info@affinityrealestate.com) | office: 218-237-3333 | fax:218-237-3377

**Affinity**  
REAL ESTATE INC

**\$344,900**  
MLS 7048304 Residential  
Income  
450 Murray Avenue  
Pine River MN 56474



website: [www.AffinityRealEstate.com](http://www.AffinityRealEstate.com) | email: [info@affinityrealestate.com](mailto:info@affinityrealestate.com) | office: 218-237-3333 | fax:218-237-3377

**Affinity**  
REAL ESTATE INC

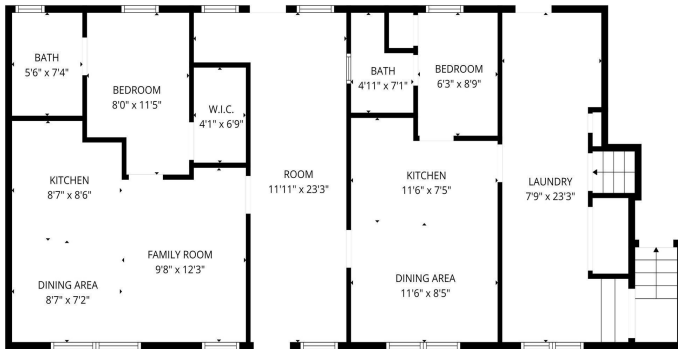
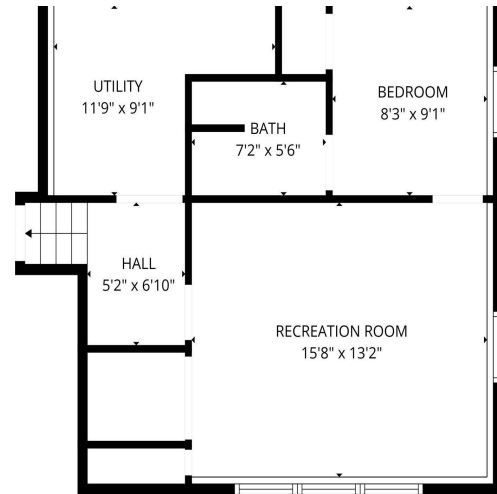
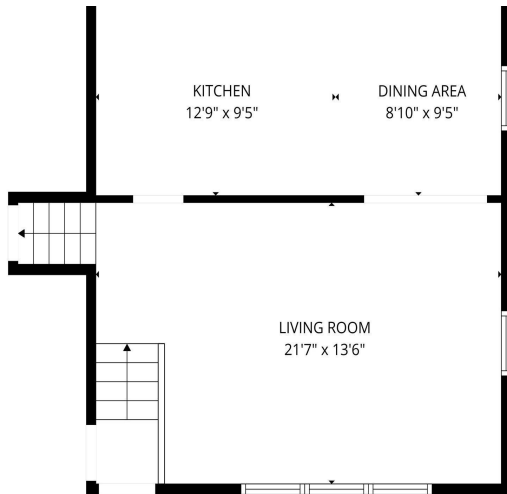
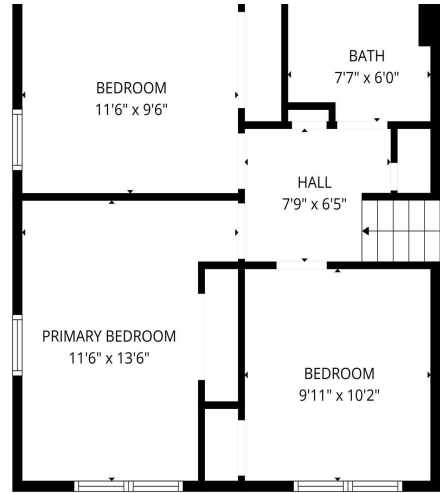
**\$344,900**  
MLS 7048304 Residential  
Income  
450 Murray Avenue  
Pine River MN 56474



website: [www.AffinityRealEstate.com](http://www.AffinityRealEstate.com) | email: [info@affinityrealestate.com](mailto:info@affinityrealestate.com) | office: 218-237-3333 | fax:218-237-3377



**\$344,900**  
MLS 7048304 Residential  
Income  
450 Murray Avenue  
Pine River MN 56474



website: [www.AffinityRealEstate.com](http://www.AffinityRealEstate.com) | email: [info@affinityrealestate.com](mailto:info@affinityrealestate.com) | office: 218-237-3333 | fax: 218-237-3377



**\$344,900**  
 MLS 7048304 Residential  
 Income  
 450 Murray Avenue  
 Pine River MN 56474