



MLS 7048339 Residential

\$919,000

2,612 sq ft
3 bedrooms
3 baths

24927 Viking Drive
Nisswa MN 56468

Status: Coming Soon

Description:

Enjoy breathtaking sunset views over Nisswa Lake on the Gull Chain from this highly sought-after Lazy Brook Townhome. Nestled within a quiet lakeside community, the property features beautifully manicured grounds, the gentle sounds of Lazy Brook meandering throughout, and over 500 feet of level shoreline with a pristine sugar-sand beach. This recently renovated 3-bed, 3-bath end unit offers stunning lake views from nearly every room and an inviting open-concept design. Highlights include a cozy gas fireplace, spacious lakeside four-season porch, and a main-floor primary suite. The upper level features a generous family room, guest bedroom, ¾ bath, and a large bunk room-perfect for hosting family and guests. Additional amenities include a finished and insulated two-car attached garage and a private boat slip. A newly constructed pedestrian tunnel beneath Hwy 371 provides safe and convenient access to nearby Nisswa, further enhancing the appeal of this exceptional Gull Chain property.

Additional Details:

Year Built	1995
Lot Acres	5.4
Lot Dimensions	525x350x920x189
Garage Stalls	2
School District	896
Taxes	\$5,607
Taxes with Assessments	\$5,632
Tax Year	2026

Additional Features:

Fuel: Array **Heat:** Forced Air, Fireplace(s)

Driving Directions:

From Nisswa, Hwy 371 South to the first stoplight, turn right onto Colonel Thorp Ln., left onto Hazelwood Drive, right onto Viking Drive, to sign and property at #24927.



Listed By:
Kurilla Real Estate LTD

Affinity Real Estate Inc. participates in the Regional Multiple Listing Service of Minnesota, Inc Broker Reciprocity (sm) program, allowing us to display other broker's listings on our website. All properties are subject to prior sale, change or withdrawal.



Call Affinity Real Estate

218-237-3333

info@affinityrealestate.com



Affinity Real Estate - 600 Park Avenue South - Park Rapids MN 56470



website: www.AffinityRealEstate.com | email: info@affinityrealestate.com | office: 218-237-3333 | fax: 218-237-3377

Affinity
REAL ESTATE INC

\$919,000
MLS 7048339 Residential
24927 Viking Drive
Nisswa MN 56468



website: www.AffinityRealEstate.com | email: info@affinityrealestate.com | office: 218-237-3333 | fax:218-237-3377

Affinity
REAL ESTATE INC

\$919,000
MLS 7048339 Residential
24927 Viking Drive
Nisswa MN 56468



website: www.AffinityRealEstate.com | email: info@affinityrealestate.com | office: 218-237-3333 | fax:218-237-3377



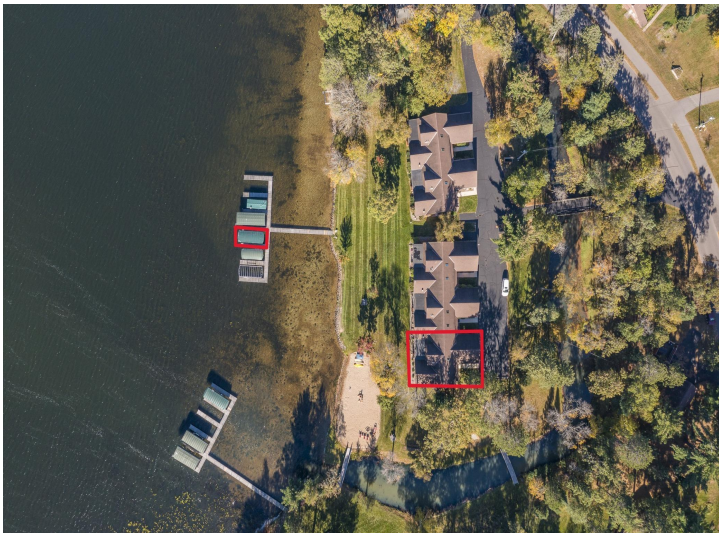
\$919,000
MLS 7048339 Residential
24927 Viking Drive
Nisswa MN 56468



website: www.AffinityRealEstate.com | email: info@affinityrealestate.com | office: 218-237-3333 | fax: 218-237-3377

Affinity
REAL ESTATE INC

\$919,000
MLS 7048339 Residential
24927 Viking Drive
Nisswa MN 56468



website: www.AffinityRealEstate.com | email: info@affinityrealestate.com | office: 218-237-3333 | fax:218-237-3377



\$919,000
MLS 7048339 Residential
24927 Viking Drive
Nisswa MN 56468



website: www.AffinityRealEstate.com | email: info@affinityrealestate.com | office: 218-237-3333 | fax:218-237-3377



\$919,000
MLS 7048339 Residential
24927 Viking Drive
Nisswa MN 56468



website: www.AffinityRealEstate.com | email: info@affinityrealestate.com | office: 218-237-3333 | fax:218-237-3377

Affinity
REAL ESTATE INC

\$919,000
MLS 7048339 Residential
24927 Viking Drive
Nisswa MN 56468



website: www.AffinityRealEstate.com | email: info@affinityrealestate.com | office: 218-237-3333 | fax:218-237-3377



\$919,000
MLS 7048339 Residential
24927 Viking Drive
Nisswa MN 56468