



MLS 7048509 Land

**\$489,900**

113 Acres  
Other

TBD State 64  
Akeley MN 56433

Status: Active

**Description:**

A Rare Opportunity to Own Something Truly Special. Properties like this don't come around often. Spanning approximately 113 +/- acres, this exceptional piece of land offers a unique blend of natural beauty and versatility. With established deer stands and multiple potential building sites, it's ready for your vision—whether that's a private retreat, hunting haven, or future home. Explore a diverse landscape of mature woodlands, fertile tillable fields, and peaceful pond. Enjoy miles of groomed trails perfect for horseback riding or quiet walks, all while taking in the stunning surroundings. This property is also a haven for wildlife, known for trophy-class deer, as well as bear, turkey, and grouse—making it a dream for outdoor enthusiasts and hunters alike. Don't miss your chance to own this one-of-a-kind property. Showings are by appointment only and must be accompanied by real estate agent, no trespassing and pre-approval letter or proof of funds will be required prior to viewing the property.

**Additional Details:**

Year Built	2000
Lot Acres	113
Lot Dimensions	Irregular - See aerial map
School District	693
Taxes	(unreported)
Taxes with Assessments	\$2,948
Tax Year	2026

**Additional Features:**

**Driving Directions:**

From Akeley go South on State 64 to the property on the left. There are no signs on the property.



Listed By:  
Edina Realty, Inc.

Affinity Real Estate Inc. participates in the Regional Multiple Listing Service of Minnesota, Inc Broker Reciprocity (sm) program, allowing us to display other broker's listings on our website. All properties are subject to prior sale, change or withdrawal.



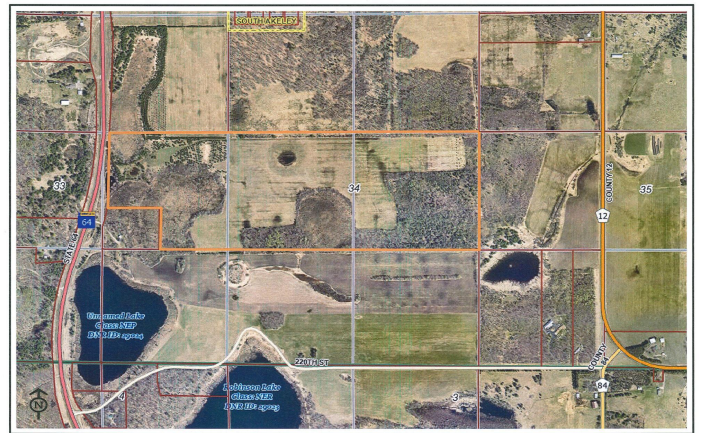
**Call Affinity Real Estate**

**218-237-3333**

**info@affinityrealestate.com**



**Affinity Real Estate - 600 Park Avenue South - Park Rapids MN 56470**



Parcel Viewer  
 Hubbard County - 301 Court Ave, Park Rapids, MN 56470  
 Created 4/3/2026 at 08:00 AM



website: [www.AffinityRealEstate.com](http://www.AffinityRealEstate.com) | email: [info@affinityrealestate.com](mailto:info@affinityrealestate.com) | office: 218-237-3333 | fax: 218-237-3377



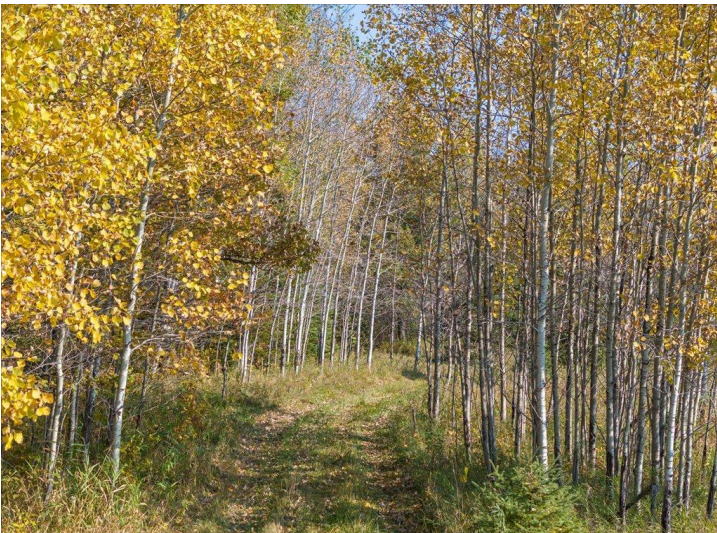
**\$489,900**  
 MLS 7048509 Land  
 TBD State 64  
 Akeley MN 56433



website: [www.AffinityRealEstate.com](http://www.AffinityRealEstate.com) | email: [info@affinityrealestate.com](mailto:info@affinityrealestate.com) | office: 218-237-3333 | fax:218-237-3377

**Affinity**  
REAL ESTATE INC

**\$489,900**  
MLS 7048509 Land  
TBD State 64  
Akeley MN 56433



website: [www.AffinityRealEstate.com](http://www.AffinityRealEstate.com) | email: [info@affinityrealestate.com](mailto:info@affinityrealestate.com) | office: 218-237-3333 | fax:218-237-3377



**\$489,900**  
MLS 7048509 Land  
TBD State 64  
Akeley MN 56433