



MLS 7048596 Lake Home

**\$1,500,000**

2,054 sq ft  
3 bedrooms  
2 baths

12388 Brookwood Circle  
Crosslake MN 56442

Waterfront: Cross Lake Reservoir

Status: Coming Soon

**Description:**

148 Feet of Sandy Cross Lake Shoreline | Whitefish Chain of Lakes | Crosslake, MN

This is one of the most distinctive lakefront opportunities to come to market on Cross Lake — the namesake water and main hub of Minnesota's legendary Whitefish Chain of Lakes. With 148 feet of pristine sandy frontage, hard sand bottom, and crystal-clear, swimmable water, the property offers the kind of shoreline that defines true Northwoods luxury and is increasingly difficult to find anywhere on the Chain.

Designed by a Honeywell engineer and built in 1968–1969, the chalet-style home was sited with intention — placed remarkably close to the water in a position that cannot be replicated under today's shoreline setback regulations. Redwood decking overlooking Cross Lake wraps the home, a hallmark of the era's premium lake construction and a material rarely seen on the Chain today. That close-to-the-lake footprint is the kind of grandfathered advantage that quietly defines the most valuable properties on Cross Lake. Step out the door and you are at the beach. Sit on the deck and you are inside the view.

**The Cross Lake & Whitefish Chain Lifestyle**

Life here is shaped by the rhythm of the lake and the small-town energy of Crosslake itself. Mornings start glass-calm in this quiet, protected no wake zone — just enough off the main traffic area to escape heavy boat traffic, close enough to be inside everything the Chain offers. Untie from your dock and you have access to 14 interconnected lakes spanning more than 13,000 acres of boating, fishing, and exploring on what many consider Minnesota's premier lake system. Cruise to dinner at Manhattan Beach Lodge, Moonlite Bay, or Zorbaz. Drift up the Pine River. Anchor off any of the sandbars around.

When the 4th of July arrives, the fireworks light up the sky from Sand Island — and this property has one of the best private viewing positions on the lake. No crowded public landing, no boat-in traffic. Just your own shoreline and the show overhead.

Crosslake itself is the heart of the Brainerd Lakes Area — a year-round community known for the Crosslake Town Square, Crosswoods Golf Course, the future National Loon Center, and one of Minnesota's most beloved St. Patrick's Day celebrations. Two and a half hours from the Twin Cities, thirty minutes from Brainerd, and a world away from the everyday.

This is a strategic acquisition as much as it is a lake home. The land is the irreplaceable asset. The cabin is fully usable today — bring the family up this summer, fish off the dock, enjoy the lifestyle — while you plan your next chapter. Pursue a thoughtful luxury renovation that honors the original architecture and the detailing. Reimagine the footprint. Or build a new

custom waterfront estate on one of the finest level sand-beach sites on Cross Lake. Live in a lake home in a long-established neighborhood where the long-term value proposition is 8 feet of premium Cross Lake sand frontage on the Whitefish Chain does not come available often, and the real estate is set to be sold for a legacy property that will hold for generations.

As a member of Minnesota's Exclusive Broker Reciprocity (EBR) program, we are pleased to display other broker's listings on our website. All properties are subject to prior sale, change or withdrawal.

**Additional Details:**

Year Built	1969
Lot Acres	0.44
Lot Dimensions	143x235x40x253



Call **Affinity Real Estate**

**218-237-3333**

info@affinityrealestate.com



Affinity Real Estate - 600 Park Avenue South - Park Rapids MN 56470



website: [www.AffinityRealEstate.com](http://www.AffinityRealEstate.com) | email: [info@affinityrealestate.com](mailto:info@affinityrealestate.com) | office: 218-237-3333 | fax:218-237-3377



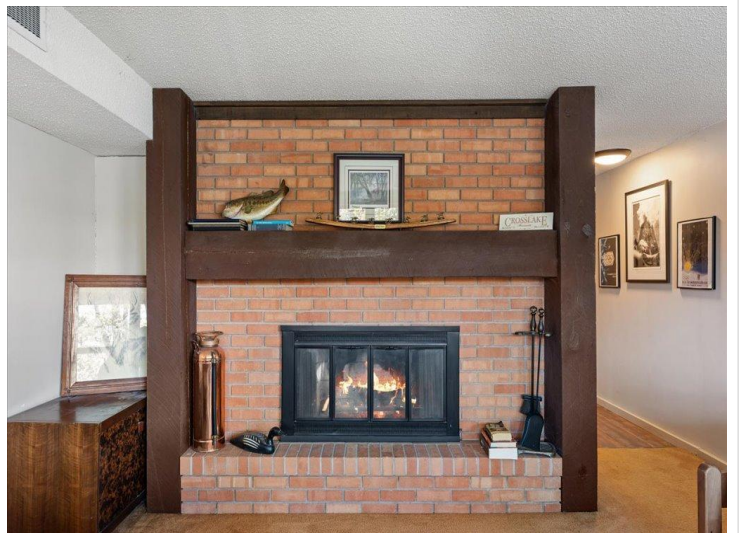
**\$1,500,000**  
MLS 7048596 Lake Home  
12388 Brookwood Circle  
Crosslake MN 56442



website: [www.AffinityRealEstate.com](http://www.AffinityRealEstate.com) | email: [info@affinityrealestate.com](mailto:info@affinityrealestate.com) | office: 218-237-3333 | fax:218-237-3377



**\$1,500,000**  
MLS 7048596 Lake Home  
12388 Brookwood Circle  
Crosslake MN 56442



website: [www.AffinityRealEstate.com](http://www.AffinityRealEstate.com) | email: [info@affinityrealestate.com](mailto:info@affinityrealestate.com) | office: 218-237-3333 | fax:218-237-3377

**Affinity**  
REAL ESTATE INC

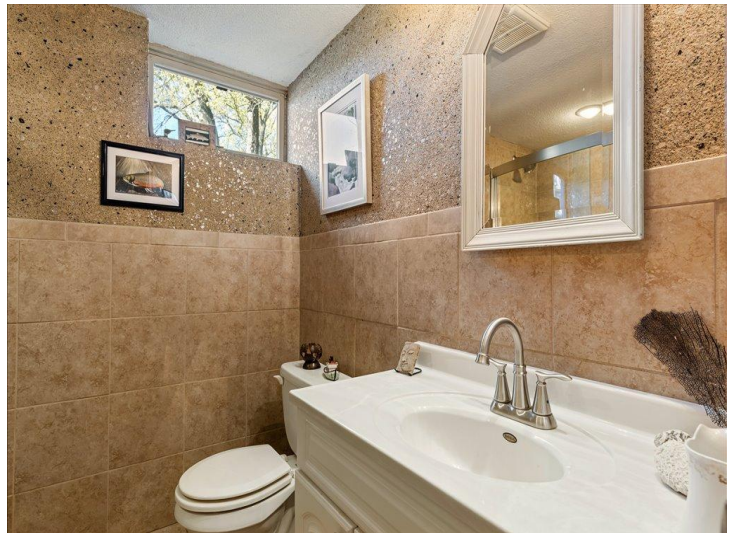
**\$1,500,000**  
MLS 7048596 Lake Home  
12388 Brookwood Circle  
Crosslake MN 56442



website: [www.AffinityRealEstate.com](http://www.AffinityRealEstate.com) | email: [info@affinityrealestate.com](mailto:info@affinityrealestate.com) | office: 218-237-3333 | fax: 218-237-3377

**Affinity**  
REAL ESTATE INC

**\$1,500,000**  
MLS 7048596 Lake Home  
12388 Brookwood Circle  
Crosslake MN 56442



website: [www.AffinityRealEstate.com](http://www.AffinityRealEstate.com) | email: [info@affinityrealestate.com](mailto:info@affinityrealestate.com) | office: 218-237-3333 | fax:218-237-3377

**Affinity**  
REAL ESTATE INC

**\$1,500,000**  
MLS 7048596 Lake Home  
12388 Brookwood Circle  
Crosslake MN 56442



website: [www.AffinityRealEstate.com](http://www.AffinityRealEstate.com) | email: [info@affinityrealestate.com](mailto:info@affinityrealestate.com) | office: 218-237-3333 | fax: 218-237-3377

**Affinity**  
REAL ESTATE INC

**\$1,500,000**  
MLS 7048596 Lake Home  
12388 Brookwood Circle  
Crosslake MN 56442



website: [www.AffinityRealEstate.com](http://www.AffinityRealEstate.com) | email: [info@affinityrealestate.com](mailto:info@affinityrealestate.com) | office: 218-237-3333 | fax:218-237-3377

**Affinity**  
REAL ESTATE INC

**\$1,500,000**  
MLS 7048596 Lake Home  
12388 Brookwood Circle  
Crosslake MN 56442



website: [www.AffinityRealEstate.com](http://www.AffinityRealEstate.com) | email: [info@affinityrealestate.com](mailto:info@affinityrealestate.com) | office: 218-237-3333 | fax:218-237-3377

**Affinity**  
REAL ESTATE INC

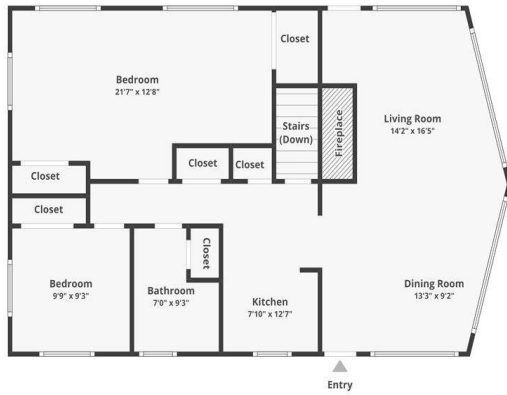
**\$1,500,000**  
MLS 7048596 Lake Home  
12388 Brookwood Circle  
Crosslake MN 56442



website: [www.AffinityRealEstate.com](http://www.AffinityRealEstate.com) | email: [info@affinityrealestate.com](mailto:info@affinityrealestate.com) | office: 218-237-3333 | fax:218-237-3377

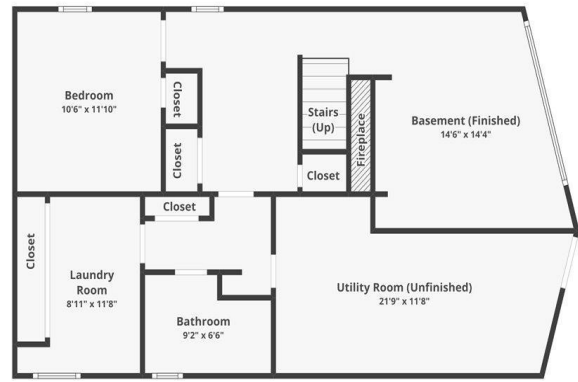


**\$1,500,000**  
MLS 7048596 Lake Home  
12388 Brookwood Circle  
Crosslake MN 56442



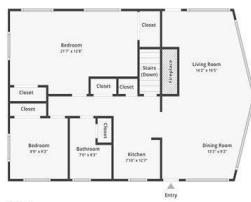
Floor 1

Floor plans are for informational purposes only and not for construction or design use. Measurements are approximate, and square footage may include finished and unfinished areas.



Basement

Floor plans are for informational purposes only and not for construction or design use. Measurements are approximate, and square footage may include finished and unfinished areas.



FLOOR 1



BASEMENT

Floor plans are for informational purposes only and not for construction or design use. Measurements are approximate, and square footage may include finished and unfinished areas.

website: [www.AffinityRealEstate.com](http://www.AffinityRealEstate.com) | email: [info@affinityrealestate.com](mailto:info@affinityrealestate.com) | office: 218-237-3333 | fax: 218-237-3377



**\$1,500,000**  
 MLS 7048596 Lake Home  
 12388 Brookwood Circle  
 Crosslake MN 56442