



MLS 7048625 Land

\$59,900

29653 Square Feet
Plat Designed

TBD Lakelin Drive Lot 4 Drive
Detroit Lakes MN 56501

Status: Active

Description:

Large building lots available for building with no restrictions other than city zoning codes and no used structures, buildings or Mobile Homes. These lots are located in a beautiful setting close to amenities with city water and sewer available.

Additional Details:

| | |
|------------------------|-----------|
| Lot Acres | 29653 |
| Lot Dimensions | Irregular |
| School District | 22 |
| Taxes | \$150 |
| Taxes with Assessments | \$2,723 |
| Tax Year | 2025 |

Additional Features:

Driving Directions:

Shorewood Drive to Lakelin Drive



Listed By:

Affinity Real Estate Inc. participates in the Regional Multiple Listing Service of Minnesota, Inc Broker Reciprocity (sm) program, allowing us to display other broker's listings on our website. All properties are subject to prior sale, change or withdrawal.



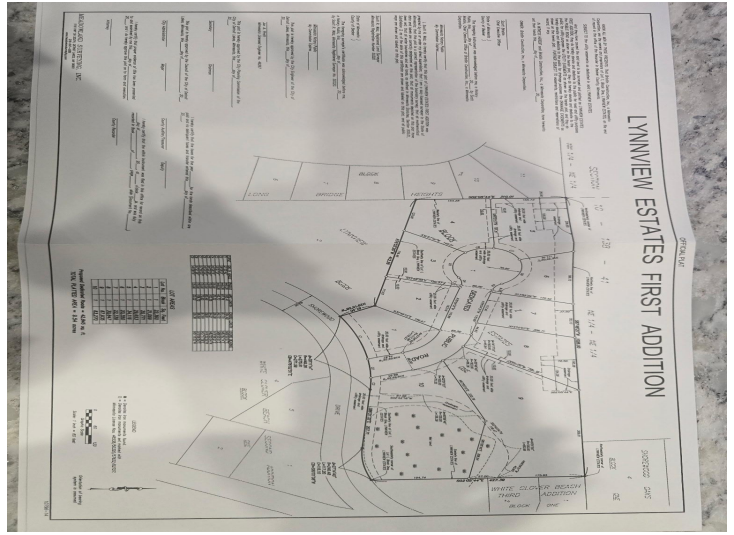
Call Affinity Real Estate

218-237-3333

info@affinityrealestate.com



Affinity Real Estate - 600 Park Avenue South - Park Rapids MN 56470



website: www.AffinityRealEstate.com | email: info@affinityrealestate.com | office: 218-237-3333 | fax:218-237-3377



\$59,900
 MLS 7048625 Land
 TBD Lakelin Drive Lot 4
 Drive
 Detroit Lakes MN 56501