



MLS 7048642 Land

\$54,900

30847 Square Feet
Plat Designed

TBD Lakelin Lot 8 Drive
Detroit Lakes MN 56501

Status: Pending

Description:

Large building lots available for building with no restrictions other than city zoning codes and no used structures or buildings. These lots are located in a beautiful setting close to amenities with city water and sewer available.

Additional Details:

Lot Acres	30847
Lot Dimensions	Irregular
School District	1074
Taxes	\$150
Taxes with Assessments	\$2,723
Tax Year	2025

Additional Features:

Driving Directions:

Shorewood Drive to Lakelin Drive



Listed By:
The Real Estate Company of Detroit Lakes

Affinity Real Estate Inc. participates in the Regional Multiple Listing Service of Minnesota, Inc Broker Reciprocity (sm) program, allowing us to display other broker's listings on our website. All properties are subject to prior sale, change or withdrawal.



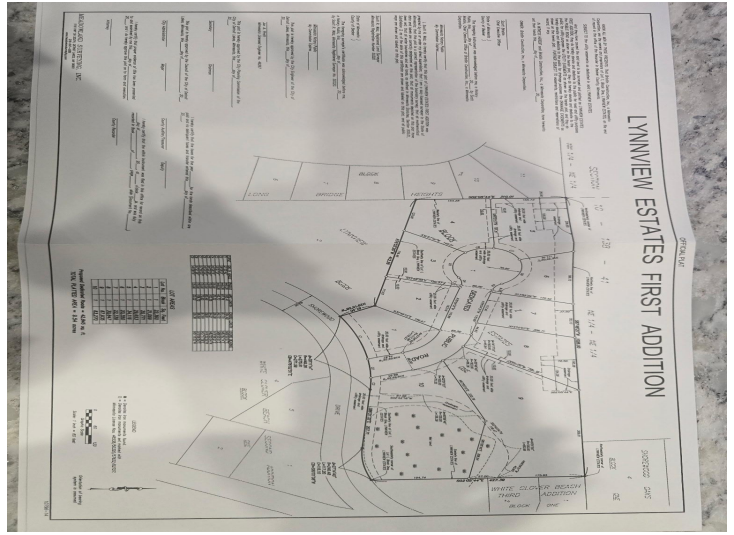
Call Affinity Real Estate

218-237-3333

info@affinityrealestate.com



Affinity Real Estate - 600 Park Avenue South - Park Rapids MN 56470



website: www.AffinityRealEstate.com | email: info@affinityrealestate.com | office: 218-237-3333 | fax:218-237-3377



\$54,900
 MLS 7048642 Land
 TBD Lakelin Lot 8 Drive
 Detroit Lakes MN 56501