



MLS 7048646 Land

**\$49,900**

83270 Square Feet  
Plat Designed

TBD Lakelin Lot 10 Drive  
Detroit Lakes MN 56501

Status: Active

**Description:**

Large building lots available for building with no restrictions other than city zoning codes and no used structures or buildings. These lots are located in a beautiful setting close to amenities with city water and sewer available.

**Additional Details:**

Lot Acres	83270
Lot Dimensions	Irregular
School District	1074
Taxes	\$150
Taxes with Assessments	\$2,723
Tax Year	2025

**Additional Features:**

**Driving Directions:**

Shorewood Drive to Lakelin Drive



Listed By:  
The Real Estate Company of Detroit Lakes

Affinity Real Estate Inc. participates in the Regional Multiple Listing Service of Minnesota, Inc Broker Reciprocity (sm) program, allowing us to display other broker's listings on our website. All properties are subject to prior sale, change or withdrawal.



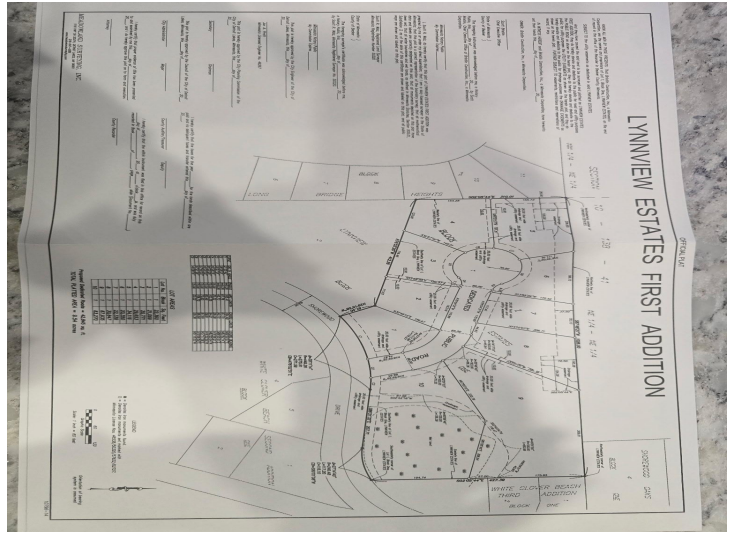
Call Affinity Real Estate

**218-237-3333**

[info@affinityrealestate.com](mailto:info@affinityrealestate.com)



Affinity Real Estate - 600 Park Avenue South - Park Rapids MN 56470



website: [www.AffinityRealEstate.com](http://www.AffinityRealEstate.com) | email: [info@affinityrealestate.com](mailto:info@affinityrealestate.com) | office: 218-237-3333 | fax:218-237-3377



**\$49,900**  
 MLS 7048646 Land  
 TBD Lakelin Lot 10 Drive  
 Detroit Lakes MN 56501