



MLS 7048774 Residential

\$99,500

872 sq ft
3 bedrooms
1 baths

15 Lund Avenue
Glyndon MN 56547

Status: Active

Description:

Discover small-town charm in peaceful Glyndon, just minutes from Fargo/Moorhead. This cozy 1 level living with 3-bed, 1-bath home offers 872 sq ft of comfortable living space on a quiet street. Updates include new roof (2 years) and electric heat with gas stubbed for future updates. You'll fall in love with the HUGE 18,000+ sq ft fully fenced in yard. Single stall garage with plenty of off street parking in front. A welcoming neighborhood, and convenient access to local amenities, it's the perfect move-in ready house at a wonderful price. Owner is licensed Realtor

Additional Details:

Year Built	1945
Lot Acres	0.42
Lot Dimensions	108x170
Garage Stalls	1
School District	1055
Taxes	\$950
Taxes with Assessments	\$950
Tax Year	2025

Additional Features:

Basement: Crawl Space **Fuel:** Array **Garage:** 1 **Heat:** Baseboard **Sewer:** City Sewer/Connected **Water:** City Water/Connected **Air Conditioning:** Window Unit(s)

Driving Directions:

SE corner of Viking Trail and Lund ave s



Listed By:
Park Co., REALTORS®

Affinity Real Estate Inc. participates in the Regional Multiple Listing Service of Minnesota, Inc Broker Reciprocity (sm) program, allowing us to display other broker's listings on our website. All properties are subject to prior sale, change or withdrawal.



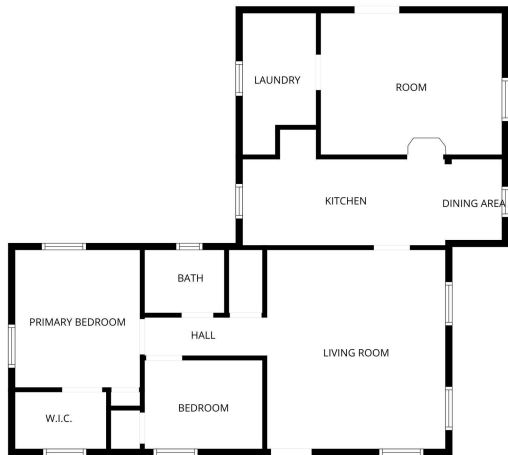
Call Affinity Real Estate

218-237-3333

info@affinityrealestate.com



Affinity Real Estate - 600 Park Avenue South - Park Rapids MN 56470



website: www.AffinityRealEstate.com | email: info@affinityrealestate.com | office: 218-237-3333 | fax: 218-237-3377

Affinity
REAL ESTATE INC

\$99,500
MLS 7048774 Residential
15 Lund Avenue
Glyndon MN 56547



website: www.AffinityRealEstate.com | email: info@affinityrealestate.com | office: 218-237-3333 | fax: 218-237-3377



\$99,500
MLS 7048774 Residential
15 Lund Avenue
Glyndon MN 56547



website: www.AffinityRealEstate.com | email: info@affinityrealestate.com | office: 218-237-3333 | fax:218-237-3377



\$99,500
MLS 7048774 Residential
15 Lund Avenue
Glyndon MN 56547



website: www.AffinityRealEstate.com | email: info@affinityrealestate.com | office: 218-237-3333 | fax:218-237-3377



\$99,500
MLS 7048774 Residential
15 Lund Avenue
Glyndon MN 56547