



MLS 7048988 Land

**\$94,900**

5.03 Acres  
Other

49928 County Highway 54  
New York Mills MN 56567

Status: Active

**Description:**

5.03 acre wooded lot, with FULL SERVICES (ELECTRIC/SEPTIC/SHARED WELL) and also includes a 10' Lake Easement Access to Buchanan Lake down the road! Very level with mature tree's throughout. Parcel has a 200A service, independent septic and a shared Well with neighboring lot (also available for purchase). Great location between Ottertail and New York Mills, with many lakes nearby. Well placed clearings with tree's outlining the property for privacy, perfect location for an RV Camp or build a homestead. The 10' lake easement is level with sandy bottom, Dock/Lift allowed, and directly next to Highway 54 on the north side of Buchanan Lake.

**Additional Details:**

Lot Acres	5.03
Lot Dimensions	335'335'
School District	1962
Taxes	\$420
Taxes with Assessments	\$420
Tax Year	2025

**Additional Features:**

**Driving Directions:**

Take Hwy 67 South from Henning, take a Right on County Road 54 3 miles. Property on South side of County Road 54.



Listed By:  
Boll Realty

Affinity Real Estate Inc. participates in the Regional Multiple Listing Service of Minnesota, Inc Broker Reciprocity (sm) program, allowing us to display other broker's listings on our website. All properties are subject to prior sale, change or withdrawal.



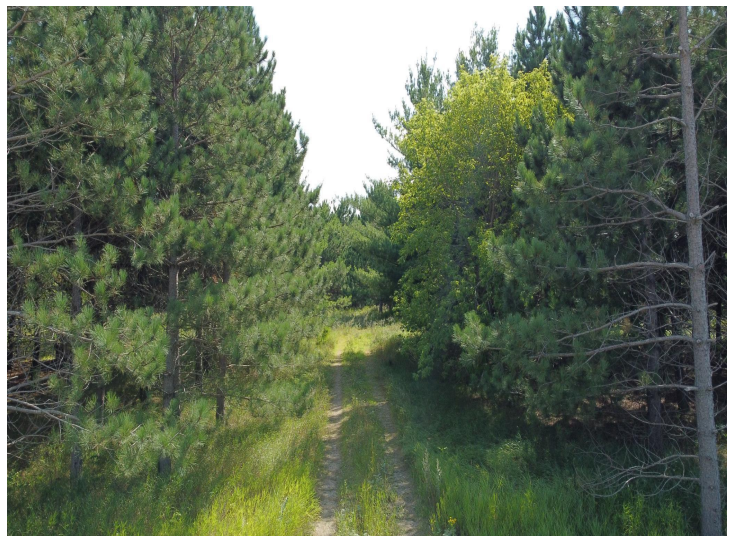
Call Affinity Real Estate

**218-237-3333**

[info@affinityrealestate.com](mailto:info@affinityrealestate.com)



Affinity Real Estate - 600 Park Avenue South - Park Rapids MN 56470



website: [www.AffinityRealEstate.com](http://www.AffinityRealEstate.com) | email: [info@affinityrealestate.com](mailto:info@affinityrealestate.com) | office: 218-237-3333 | fax:218-237-3377



**\$94,900**  
MLS 7048988 Land  
49928 County Highway 54  
New York Mills MN 56567



website: [www.AffinityRealEstate.com](http://www.AffinityRealEstate.com) | email: [info@affinityrealestate.com](mailto:info@affinityrealestate.com) | office: 218-237-3333 | fax:218-237-3377



**\$94,900**  
MLS 7048988 Land  
49928 County Highway 54  
New York Mills MN 56567



website: [www.AffinityRealEstate.com](http://www.AffinityRealEstate.com) | email: [info@affinityrealestate.com](mailto:info@affinityrealestate.com) | office: 218-237-3333 | fax:218-237-3377



**\$94,900**  
MLS 7048988 Land  
49928 County Highway 54  
New York Mills MN 56567



website: [www.AffinityRealEstate.com](http://www.AffinityRealEstate.com) | email: [info@affinityrealestate.com](mailto:info@affinityrealestate.com) | office: 218-237-3333 | fax:218-237-3377



**\$94,900**  
MLS 7048988 Land  
49928 County Highway 54  
New York Mills MN 56567



website: [www.AffinityRealEstate.com](http://www.AffinityRealEstate.com) | email: [info@affinityrealestate.com](mailto:info@affinityrealestate.com) | office: 218-237-3333 | fax:218-237-3377



**\$94,900**  
MLS 7048988 Land  
49928 County Highway 54  
New York Mills MN 56567



website: [www.AffinityRealEstate.com](http://www.AffinityRealEstate.com) | email: [info@affinityrealestate.com](mailto:info@affinityrealestate.com) | office: 218-237-3333 | fax:218-237-3377



**\$94,900**  
MLS 7048988 Land  
49928 County Highway 54  
New York Mills MN 56567



website: [www.AffinityRealEstate.com](http://www.AffinityRealEstate.com) | email: [info@affinityrealestate.com](mailto:info@affinityrealestate.com) | office: 218-237-3333 | fax:218-237-3377



**\$94,900**  
MLS 7048988 Land  
49928 County Highway 54  
New York Mills MN 56567