



MLS 7049051 Land

\$199,000

1.01 Acres
Other

Lot 8 Branch Creek Road
Detroit Lakes MN 56501

Status: Active

Description:

Direct Access to DETROIT LAKE. Great location to build your dream home. Includes boat slip.

Additional Details:

Lot Acres	1.01
Lot Dimensions	irr
School District	1074
Taxes	\$248
Taxes with Assessments	\$268
Tax Year	2026

Additional Features:

Driving Directions:

Hwy 59 to Branch Creek Drive



Listed By:
REMAX Lakes Region

Affinity Real Estate Inc. participates in the Regional Multiple Listing Service of Minnesota, Inc Broker Reciprocity (sm) program, allowing us to display other broker's listings on our website. All properties are subject to prior sale, change or withdrawal.



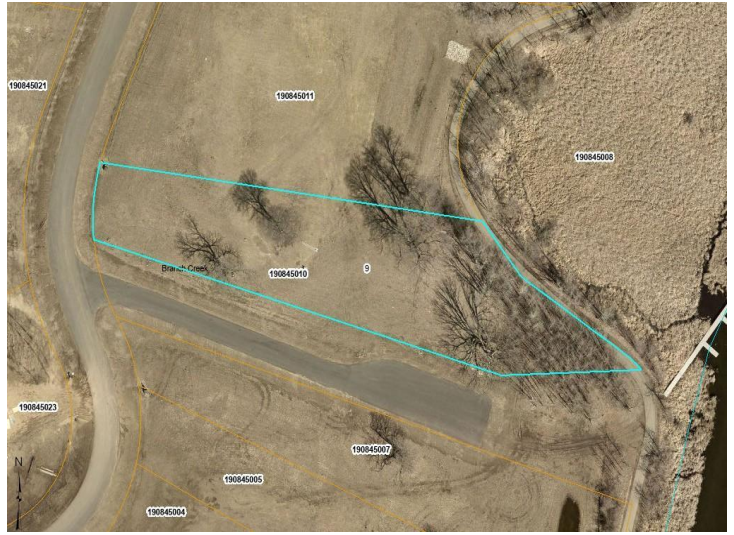
Call Affinity Real Estate

218-237-3333

info@affinityrealestate.com



Affinity Real Estate - 600 Park Avenue South - Park Rapids MN 56470



website: www.AffinityRealEstate.com | email: info@affinityrealestate.com | office: 218-237-3333 | fax:218-237-3377



\$199,000
MLS 7049051 Land
Lot 8 Branch Creek Road
Detroit Lakes MN 56501



website: www.AffinityRealEstate.com | email: info@affinityrealestate.com | office: 218-237-3333 | fax:218-237-3377



\$199,000
MLS 7049051 Land
Lot 8 Branch Creek Road
Detroit Lakes MN 56501



website: www.AffinityRealEstate.com | email: info@affinityrealestate.com | office: 218-237-3333 | fax:218-237-3377



\$199,000
MLS 7049051 Land
Lot 8 Branch Creek Road
Detroit Lakes MN 56501



website: www.AffinityRealEstate.com | email: info@affinityrealestate.com | office: 218-237-3333 | fax:218-237-3377



\$199,000
MLS 7049051 Land
Lot 8 Branch Creek Road
Detroit Lakes MN 56501