



MLS 7049057 Land

\$235,000

3.4 Acres
Raw Land

TBD Lot 7 County Rd 39 NE
Longville MN 56655

Status: Active

Description:

Discover the perfect Northwoods escape on this expansive Leech Lake lot, offering 100 feet of pristine west facing shoreline and over 3 acres of wooded privacy. Multiple lots are available. Conveniently located between Walker and Longville, this property offers quick access to dining, shopping, and trails. With no covenants or restrictions, access right off the tar road on the east side, and power already running across the property, this lot offers complete freedom to park your camper, build your dream cabin, or lakeside retreat. Enjoy direct access to world-class fishing, boating, and sunsets on one of Minnesota's most sought-after lakes. There are also thousands of acres of National Forest and other public land on the south side of these lots, with 20,000+ acres of National forest and other public lands within a few miles of this property.

Contract for deed is available.

Owner/Agent

Additional Details:

Lot Acres	3.4
Lot Dimensions	100x1461
School District	693
Taxes	\$1,000
Taxes with Assessments	\$1,000
Tax Year	2025

Additional Features:

Driving Directions:

From Hwy 200, head north on County Rd 39 NE, lots are on the west side of the road, on the north side of white rock ln. There is a sign on lot 8.



Listed By:
Raboin Realty

Affinity Real Estate Inc. participates in the Regional Multiple Listing Service of Minnesota, Inc Broker Reciprocity (sm) program, allowing us to display other broker's listings on our website. All properties are subject to prior sale, change or withdrawal.



Call Affinity Real Estate

218-237-3333

info@affinityrealestate.com



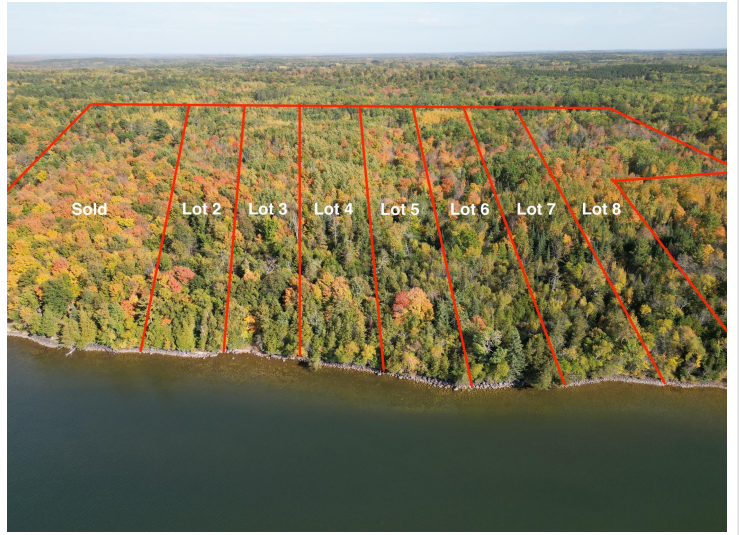
Affinity Real Estate - 600 Park Avenue South - Park Rapids MN 56470



website: www.AffinityRealEstate.com | email: info@affinityrealestate.com | office: 218-237-3333 | fax:218-237-3377



\$235,000
MLS 7049057 Land
TBD Lot 7 County Rd 39 NE
Longville MN 56655



website: www.AffinityRealEstate.com | email: info@affinityrealestate.com | office: 218-237-3333 | fax:218-237-3377



\$235,000
MLS 7049057 Land
TBD Lot 7 County Rd 39 NE
Longville MN 56655