



MLS 7049085 Land

\$17,500

0.13 Acres
Plat Designed

Lot 11 Irvine Avenue
Bemidji MN 56601

Status: Active

Description:

Looking to build your new home in Bemidji. The Villas at Natures Edge Gives you a view of nature out your back windows or patio while being conveniently located near all that Bemidji has to offer.

Additional Details:

Lot Acres	0.13
Lot Dimensions	65.16, 103.22, 71.22, 75.65
School District	1386
Taxes	\$364
Taxes with Assessments	\$364
Tax Year	2025

Additional Features:

Driving Directions:

From Bemidji, North on Irvine Avenue 1.3 miles to Rt into Villas At Natures Edge to Lot #11



Listed By:
Timber Ghost Realty, LLC

Affinity Real Estate Inc. participates in the Regional Multiple Listing Service of Minnesota, Inc Broker Reciprocity (sm) program, allowing us to display other broker's listings on our website. All properties are subject to prior sale, change or withdrawal.



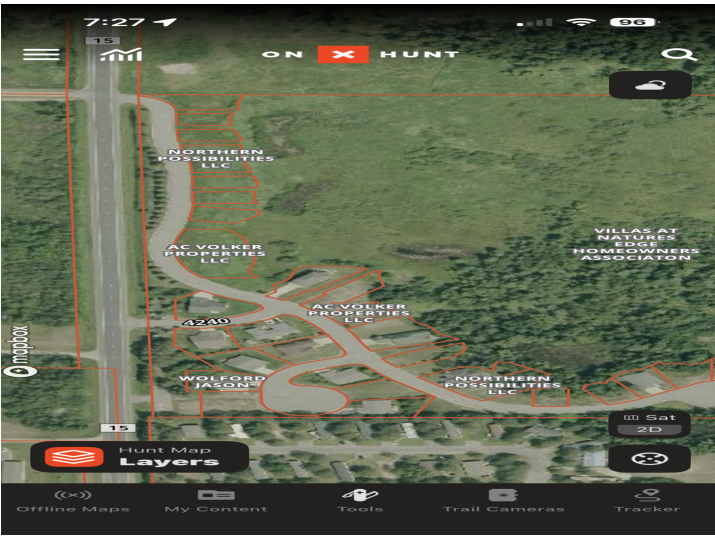
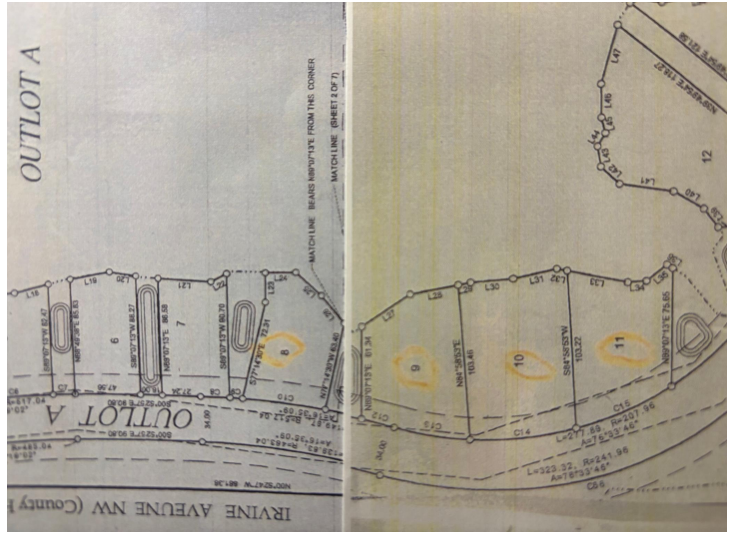
Call Affinity Real Estate

218-237-3333

info@affinityrealestate.com



Affinity Real Estate - 600 Park Avenue South - Park Rapids MN 56470



website: www.AffinityRealEstate.com | email: info@affinityrealestate.com | office: 218-237-3333 | fax:218-237-3377



\$17,500
 MLS 7049085 Land
 Lot 11 Irvine Avenue
 Bemidji MN 56601