



MLS 7049295 Residential

\$339,900

3,956 sq ft
5 bedrooms
3 baths

14584 Southshores Circle
Lake Park MN 56554

Status: Active

Description:

Spacious 2022-built home situated on approximately 3.4 acres with 334 feet of frontage on West LaBelle Lake. Offering 5 bedrooms, 3 bathrooms, and nearly 4,000 finished square feet, this property features an open-concept layout with a large kitchen, main floor primary suite with private bath and walk-in closet, and expansive lower level with additional living space. Attached 3-stall garage provides ample storage and functionality. The setting offers a blend of privacy and open space with scenic lake views and room to enjoy the outdoors. Conveniently located near Lake Park with easy access to Highway 10 for commuting.

Additional Details:

Year Built	2022
Lot Acres	3.4
Lot Dimensions	274' x 1400'
Garage Stalls	3
School District	1299
Taxes	\$2,060
Taxes with Assessments	\$2,060
Tax Year	2026

Additional Features:

Basement: Block, Daylight/Lookout Windows, Egress Window(s), Finished, Full **Fuel:** Array **Garage:** 3 **Heat:** Forced Air, Fireplace(s)
Sewer: Mound Septic, Private Sewer, Septic System Compliant - Yes **Water:** Private, Well **Air Conditioning:** Central Air

Driving Directions:

From US-10 W turn right onto 2nd Street, go 1 mile and turn right onto North St. Turn left onto Southshores Circle. House will be first on your left.



Listed By:
Gallery of Homes

Affinity Real Estate Inc. participates in the Regional Multiple Listing Service of Minnesota, Inc Broker Reciprocity (sm) program, allowing us to display other broker's listings on our website. All properties are subject to prior sale, change or withdrawal.



Call Affinity Real Estate

218-237-3333

info@affinityrealestate.com



Affinity Real Estate - 600 Park Avenue South - Park Rapids MN 56470



website: www.AffinityRealEstate.com | email: info@affinityrealestate.com | office: 218-237-3333 | fax:218-237-3377



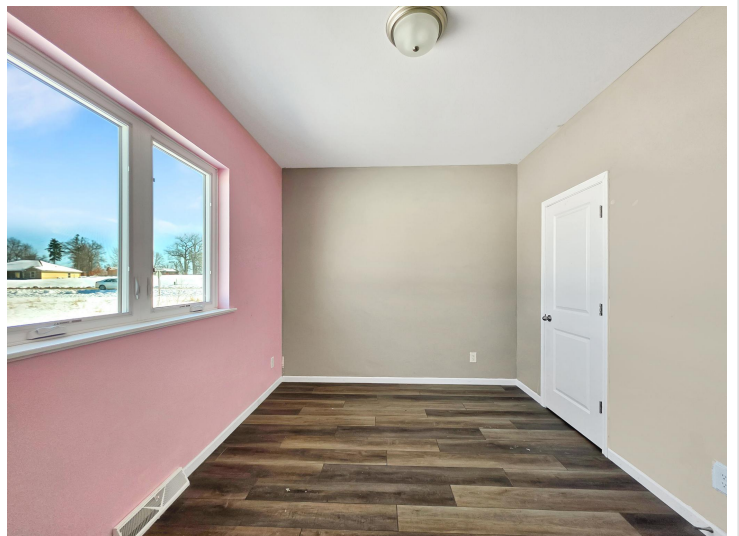
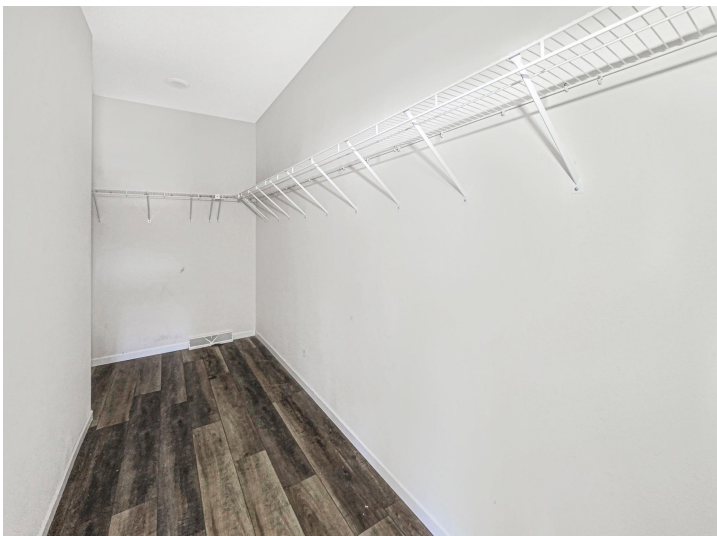
\$339,900
MLS 7049295 Residential
14584 Southshores Circle
Lake Park MN 56554



website: www.AffinityRealEstate.com | email: info@affinityrealestate.com | office: 218-237-3333 | fax:218-237-3377

Affinity
REAL ESTATE INC

\$339,900
MLS 7049295 Residential
14584 Southshores Circle
Lake Park MN 56554



website: www.AffinityRealEstate.com | email: info@affinityrealestate.com | office: 218-237-3333 | fax:218-237-3377



\$339,900
MLS 7049295 Residential
14584 Southshores Circle
Lake Park MN 56554



website: www.AffinityRealEstate.com | email: info@affinityrealestate.com | office: 218-237-3333 | fax: 218-237-3377



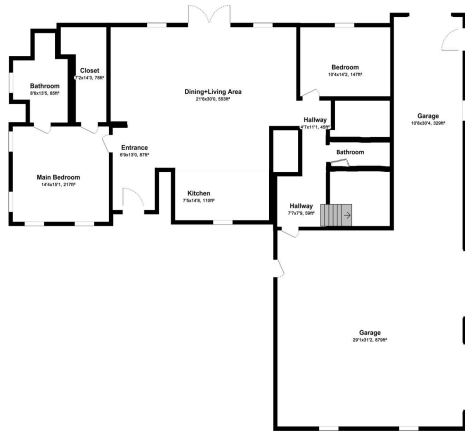
\$339,900
MLS 7049295 Residential
14584 Southshores Circle
Lake Park MN 56554



website: www.AffinityRealEstate.com | email: info@affinityrealestate.com | office: 218-237-3333 | fax:218-237-3377

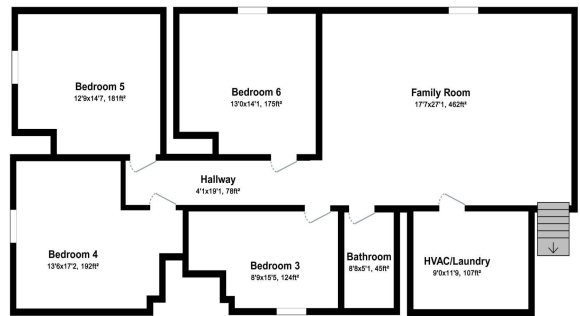


\$339,900
MLS 7049295 Residential
14584 Southshores Circle
Lake Park MN 56554



For illustration purposes only. Not to scale.

Ground Floor



For illustration purposes only. Not to scale.

Basement

website: www.AffinityRealEstate.com | email: info@affinityrealestate.com | office: 218-237-3333 | fax: 218-237-3377



\$339,900
 MLS 7049295 Residential
 14584 Southshores Circle
 Lake Park MN 56554