



MLS 7049606 Residential

\$629,860

1,008 sq ft
3 bedrooms
2 baths

15849 Maple Ridge Road
Audubon MN 56511

Status: Active

Description:

Lakefront Retreat on Little Cormorant Lake – Turnkey Living with Modern Updates!

Welcome to 15849 Maple Ridge Rd, a beautifully updated 3 bed 2 bath lakefront home offering a sandy beach, mature trees, great updates, and an optional 1-acre backlot with a 60'x88' shop! Whether you're looking for a year-round residence or the perfect weekend escape, this property blends modern comfort with the best of Minnesota lake living.

Inside you'll find a fully updated kitchen featuring butcher block countertops, stainless steel appliances, and a convenient breakfast bar that opens to panoramic lake views. The bright and inviting living area is surrounded by all vinyl windows, filling the space with natural light throughout the day. A functional wood stove adds warmth and charm, while a patio door provides direct access to the expansive wraparound deck. The primary bedroom serves as a private retreat, complete with its own private walkout to the deck, allowing you to wake up to serene waterfront scenery in peace. It also includes a private en-suite bathroom with in-unit laundry for added convenience.


Outside you can enjoy 65' of sandy shoreline with beautiful mature trees, complete with a new 32' aluminum dock for all your favorite lake activities. Then there's the convenient 1.5-stall drive-through garage, providing ample space for storing all your lake gear and getting your toys on the lake without needing a public access. Other key features include fresh sod, a newer well, and new 1500gal holding tank

Want more space? There's also a 1-acre backlot featuring a massive 60' x 88' metal shop that can be included for an additional \$250k, or bought separately, perfect for hobbies, storage, or even rental opportunities.

Don't miss this rare chance to own a slice of lakefront paradise in the heart of Lake Country. Schedule your showing today and experience lake life at its best!

Additional Details:

Year Built 1975
Lot Acres 0.25
Lot Dimensions 65x175 +/-

Garage Stalls	1
 Listed By: 299 Beyond Realty	
Taxes	\$2,412
Taxes with Assessments	\$2,412
Tax Year	2020

Affinity Real Estate Inc. participates in the Regional Multiple Listing Service of Minnesota, Inc Broker Reciprocity (sm) program, allowing us to display other broker's listings on our website. All properties are subject to prior sale, change or withdrawal.



Call Affinity Real Estate
218-237-3333
info@affinityrealestate.com



Affinity Real Estate - 600 Park Avenue South - Park Rapids MN 56470

Additional Features:

Basement: Block, Crawl Space **Fuel:** Array **Garage:** Min **Heat:** Baseboard, Outdoor Furnace, Wood Stove **Sewer:** Septic System Compliant **Water:** Private, Well **Air Conditioning:** Central Air, Dual

Driving Directions:



website: www.AffinityRealEstate.com | email: info@affinityrealestate.com | office: 218-237-3333 | fax:218-237-3377

Affinity
REAL ESTATE INC

\$629,860
MLS 7049606 Residential
15849 Maple Ridge Road
Audubon MN 56511



website: www.AffinityRealEstate.com | email: info@affinityrealestate.com | office: 218-237-3333 | fax:218-237-3377



\$629,860
MLS 7049606 Residential
15849 Maple Ridge Road
Audubon MN 56511



website: www.AffinityRealEstate.com | email: info@affinityrealestate.com | office: 218-237-3333 | fax:218-237-3377

Affinity
REAL ESTATE INC

\$629,860
MLS 7049606 Residential
15849 Maple Ridge Road
Audubon MN 56511



website: www.AffinityRealEstate.com | email: info@affinityrealestate.com | office: 218-237-3333 | fax:218-237-3377

Affinity
REAL ESTATE INC

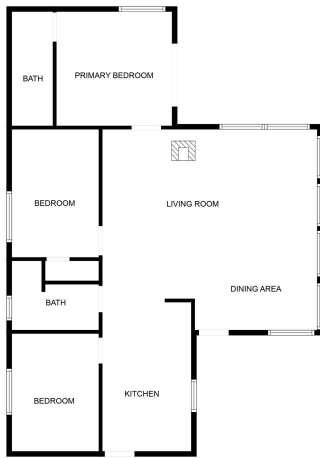
\$629,860
MLS 7049606 Residential
15849 Maple Ridge Road
Audubon MN 56511



website: www.AffinityRealEstate.com | email: info@affinityrealestate.com | office: 218-237-3333 | fax:218-237-3377

Affinity
REAL ESTATE INC

\$629,860
MLS 7049606 Residential
15849 Maple Ridge Road
Audubon MN 56511



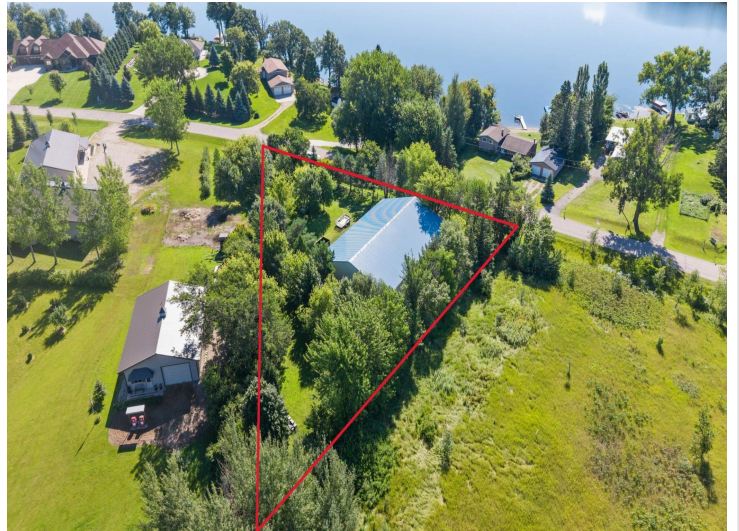
FLOOR PLAN CREATED BY CUBSCASA APP. MEASUREMENTS DEEMED HIGHLY RELIABLE BUT NOT GUARANTEED.



website: www.AffinityRealEstate.com | email: info@affinityrealestate.com | office: 218-237-3333 | fax: 218-237-3377



\$629,860
MLS 7049606 Residential
15849 Maple Ridge Road
Audubon MN 56511



website: www.AffinityRealEstate.com | email: info@affinityrealestate.com | office: 218-237-3333 | fax:218-237-3377



\$629,860
MLS 7049606 Residential
15849 Maple Ridge Road
Audubon MN 56511



website: www.AffinityRealEstate.com | email: info@affinityrealestate.com | office: 218-237-3333 | fax:218-237-3377

Affinity
REAL ESTATE INC

\$629,860
MLS 7049606 Residential
15849 Maple Ridge Road
Audubon MN 56511



website: www.AffinityRealEstate.com | email: info@affinityrealestate.com | office: 218-237-3333 | fax:218-237-3377



\$629,860
MLS 7049606 Residential
15849 Maple Ridge Road
Audubon MN 56511