



MLS 7049726 Land

**\$199,900**

40.17 Acres  
Raw Land

TBD Sleepy Hollow Road  
Brainerd MN 56449

Status: Active

**Description:**

Multiple offers received. Highest and best offers are due 4/11/26 by 1pm. 40 acres on Sleepy Hollow road. All high ground, heavily wooded, with great road access. Great location ten minutes south of Brainerd/Baxter.

**Additional Details:**

Lot Acres	40.17
Lot Dimensions	1329x1316
School District	896
Taxes	\$708
Taxes with Assessments	\$708
Tax Year	2025

**Additional Features:**

**Driving Directions:**

From MN-371 S: Turn left onto 50th Ave SW, turn left onto Sleep Hollow Rd, and continue for about four and a half miles. The lot will be on the right.



Listed By:  
eXp Realty

Affinity Real Estate Inc. participates in the Regional Multiple Listing Service of Minnesota, Inc Broker Reciprocity (sm) program, allowing us to display other broker's listings on our website. All properties are subject to prior sale, change or withdrawal.



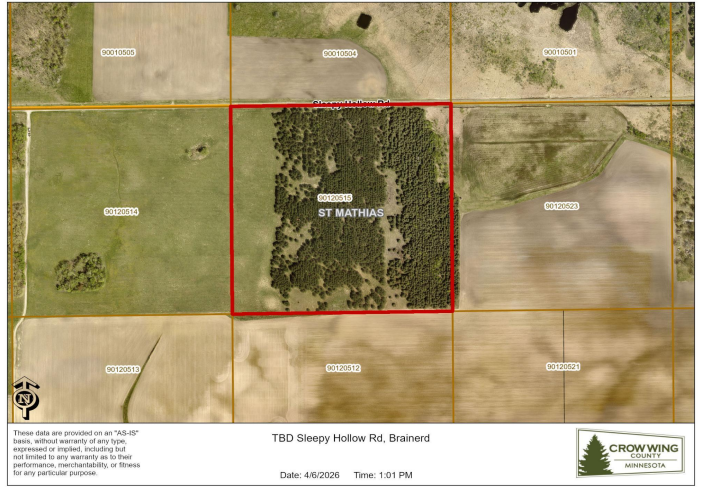
Call Affinity Real Estate

**218-237-3333**

[info@affinityrealestate.com](mailto:info@affinityrealestate.com)



Affinity Real Estate - 600 Park Avenue South - Park Rapids MN 56470



website: [www.AffinityRealEstate.com](http://www.AffinityRealEstate.com) | email: [info@affinityrealestate.com](mailto:info@affinityrealestate.com) | office: 218-237-3333 | fax:218-237-3377



**\$199,900**  
MLS 7049726 Land  
TBD Sleepy Hollow Road  
Brainerd MN 56449



website: [www.AffinityRealEstate.com](http://www.AffinityRealEstate.com) | email: [info@affinityrealestate.com](mailto:info@affinityrealestate.com) | office: 218-237-3333 | fax:218-237-3377



**\$199,900**  
MLS 7049726 Land  
TBD Sleepy Hollow Road  
Brainerd MN 56449