



MLS 7050195 Residential

\$671,000

1,962 sq ft
4 bedrooms
3 baths

38700 Osprey Trail
Laporte MN 56461

Status: Active

Description:

This is a property you will not want to miss out on! 38700 Osprey Trail sits on 21.12 acres with 302 feet of shoreline on Garfield Lake, which has loads of potential. As you pull into the property, which is located at the end of a dead-end private road, you will first see the home with an attached woodshed, and around the corner, you will find the old greenhouse next to an amazing newer greenhouse. Walk around to see many other outbuildings, all clad in matching green metal siding, such as the storage shed and a garden shed that includes a small toilet, sink, stove, and water heater. Step out of the garden shed to what was once a beautiful orchard, follow to the pond, and then to the lakeshore. But wait, we can't forget the house! This spacious 4-bedroom, 3-bathroom home is handicap accessible with an elevator that goes from the dining room down to the basement and a wheelchair lift in the garage. Build instant equity. This home is listed under assessed value, and it's waiting for you and your custom touches!

Additional Details:

Year Built	1996
Lot Acres	21.12
Lot Dimensions	irregular
Garage Stalls	3
School District	1375
Taxes	\$3,828
Taxes with Assessments	\$3,828
Tax Year	2026

Additional Features:

Basement: Block, Sump Pump, Tile Shower, Unfinished, Walkout **Fuel:** Array **Garage:** 3 **Heat:** Forced Air **Sewer:** Mound Septic, Private Sewer
Water: Well **Air Conditioning:** Central Air

Driving Directions:

In Laporte, head southeast on #200 to a left on #45, left on 393rd St, left on Old Sunset Dr, right on Osprey Trail. Home is at the end.



Listed By:
Realty Experts, LLC

Affinity Real Estate Inc. participates in the Regional Multiple Listing Service of Minnesota, Inc Broker Reciprocity (sm) program, allowing us to display other broker's listings on our website. All properties are subject to prior sale, change or withdrawal.



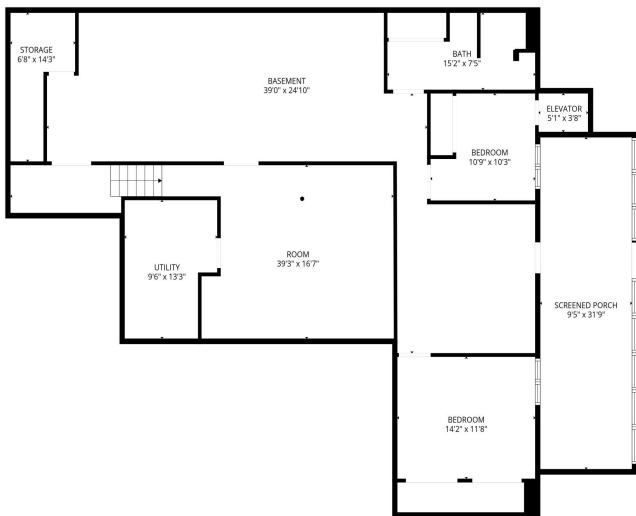
Call Affinity Real Estate

218-237-3333

info@affinityrealestate.com



Affinity Real Estate - 600 Park Avenue South - Park Rapids MN 56470



website: www.AffinityRealEstate.com | email: info@affinityrealestate.com | office: 218-237-3333 | fax: 218-237-3377



\$671,000
 MLS 7050195 Residential
 38700 Osprey Trail
 Laporte MN 56461



website: www.AffinityRealEstate.com | email: info@affinityrealestate.com | office: 218-237-3333 | fax:218-237-3377

Affinity
REAL ESTATE INC

\$671,000
MLS 7050195 Residential
38700 Osprey Trail
Laporte MN 56461



website: www.AffinityRealEstate.com | email: info@affinityrealestate.com | office: 218-237-3333 | fax: 218-237-3377

Affinity
REAL ESTATE INC

\$671,000
MLS 7050195 Residential
38700 Osprey Trail
Laporte MN 56461



website: www.AffinityRealEstate.com | email: info@affinityrealestate.com | office: 218-237-3333 | fax:218-237-3377



\$671,000
MLS 7050195 Residential
38700 Osprey Trail
Laporte MN 56461



website: www.AffinityRealEstate.com | email: info@affinityrealestate.com | office: 218-237-3333 | fax:218-237-3377

Affinity
REAL ESTATE INC

\$671,000
MLS 7050195 Residential
38700 Osprey Trail
Laporte MN 56461



website: www.AffinityRealEstate.com | email: info@affinityrealestate.com | office: 218-237-3333 | fax: 218-237-3377

Affinity
REAL ESTATE INC

\$671,000
MLS 7050195 Residential
38700 Osprey Trail
Laporte MN 56461



website: www.AffinityRealEstate.com | email: info@affinityrealestate.com | office: 218-237-3333 | fax:218-237-3377



\$671,000
MLS 7050195 Residential
38700 Osprey Trail
Laporte MN 56461



website: www.AffinityRealEstate.com | email: info@affinityrealestate.com | office: 218-237-3333 | fax:218-237-3377

Affinity
REAL ESTATE INC

\$671,000
MLS 7050195 Residential
38700 Osprey Trail
Laporte MN 56461



website: www.AffinityRealEstate.com | email: info@affinityrealestate.com | office: 218-237-3333 | fax:218-237-3377

Affinity
REAL ESTATE INC

\$671,000
MLS 7050195 Residential
38700 Osprey Trail
Laporte MN 56461



website: www.AffinityRealEstate.com | email: info@affinityrealestate.com | office: 218-237-3333 | fax:218-237-3377



\$671,000
MLS 7050195 Residential
38700 Osprey Trail
Laporte MN 56461



website: www.AffinityRealEstate.com | email: info@affinityrealestate.com | office: 218-237-3333 | fax:218-237-3377



\$671,000
MLS 7050195 Residential
38700 Osprey Trail
Laporte MN 56461



website: www.AffinityRealEstate.com | email: info@affinityrealestate.com | office: 218-237-3333 | fax:218-237-3377



\$671,000
MLS 7050195 Residential
38700 Osprey Trail
Laporte MN 56461