



MLS 7050316 Residential

\$499,900

1,664 sq ft
3 bedrooms
2 baths

4850 Van Buren Avenue
Bemidji MN 56601

Status: Active

Description:

Welcome to this well-maintained 1,650 sq ft home set on 40 acres of beautiful, level land just 10 minutes from downtown Bemidji, hospitals, and local shopping. The home features 3 bedrooms and 2 bathrooms, along with recent upgrades including brand-new shingles, seamless gutters, new gutter guard, seamless steel siding, large concrete driveway for low-maintenance living. For those needing extra space, the impressive 60x40 shop provides excellent storage or workspace, and partially insulated. The land itself is a mix of trees and open areas, privacy, usability, and endless possibilities whether for recreation, hobby farming, or simply enjoying the outdoors. A rare opportunity to own acreage this close to Bemidji with both modern updates and room to grow

Additional Details:


Year Built	2000
Lot Acres	40.14
Lot Dimensions	1500x640
Garage Stalls	3
School District	31
Taxes	\$3,972
Taxes with Assessments	\$3,972
Tax Year	2026

Additional Features:

Basement: None **Fuel:** Electric, Propane **Garage:** 3 **Heat:** Dual Fuel/Off Peak, Forced Air, Fireplace(s), In-Floor Heating **Sewer:** Private Sewer, Tank with Drainage Field **Water:** 4-Inch Submersible, Drilled, Private **Air Conditioning:** Central Air

Driving Directions:

From Bemidji Hwy 2 East to County 4 Head e .25 miles N on Van Buren home is on right

 Listed By:
218 Real Estate

Affinity Real Estate Inc. participates in the Regional Multiple Listing Service of Minnesota, Inc Broker Reciprocity (sm) program, allowing us to display other broker's listings on our website. All properties are subject to prior sale, change or withdrawal.



Call Affinity Real Estate

218-237-3333

info@affinityrealestate.com



Affinity Real Estate - 600 Park Avenue South - Park Rapids MN 56470



website: www.AffinityRealEstate.com | email: info@affinityrealestate.com | office: 218-237-3333 | fax:218-237-3377

Affinity
REAL ESTATE INC

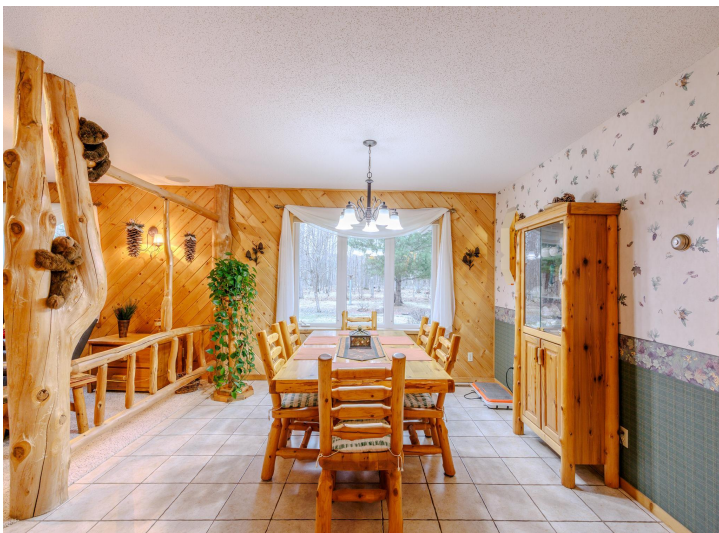
\$499,900
MLS 7050316 Residential
4850 Van Buren Avenue
Bemidji MN 56601



website: www.AffinityRealEstate.com | email: info@affinityrealestate.com | office: 218-237-3333 | fax:218-237-3377

Affinity
REAL ESTATE INC

\$499,900
MLS 7050316 Residential
4850 Van Buren Avenue
Bemidji MN 56601



website: www.AffinityRealEstate.com | email: info@affinityrealestate.com | office: 218-237-3333 | fax:218-237-3377

Affinity
REAL ESTATE INC

\$499,900
MLS 7050316 Residential
4850 Van Buren Avenue
Bemidji MN 56601



website: www.AffinityRealEstate.com | email: info@affinityrealestate.com | office: 218-237-3333 | fax:218-237-3377

Affinity
REAL ESTATE INC

\$499,900
MLS 7050316 Residential
4850 Van Buren Avenue
Bemidji MN 56601



website: www.AffinityRealEstate.com | email: info@affinityrealestate.com | office: 218-237-3333 | fax:218-237-3377

Affinity
REAL ESTATE INC

\$499,900
MLS 7050316 Residential
4850 Van Buren Avenue
Bemidji MN 56601



website: www.AffinityRealEstate.com | email: info@affinityrealestate.com | office: 218-237-3333 | fax:218-237-3377

Affinity
REAL ESTATE INC

\$499,900
MLS 7050316 Residential
4850 Van Buren Avenue
Bemidji MN 56601



website: www.AffinityRealEstate.com | email: info@affinityrealestate.com | office: 218-237-3333 | fax: 218-237-3377

Affinity
REAL ESTATE INC

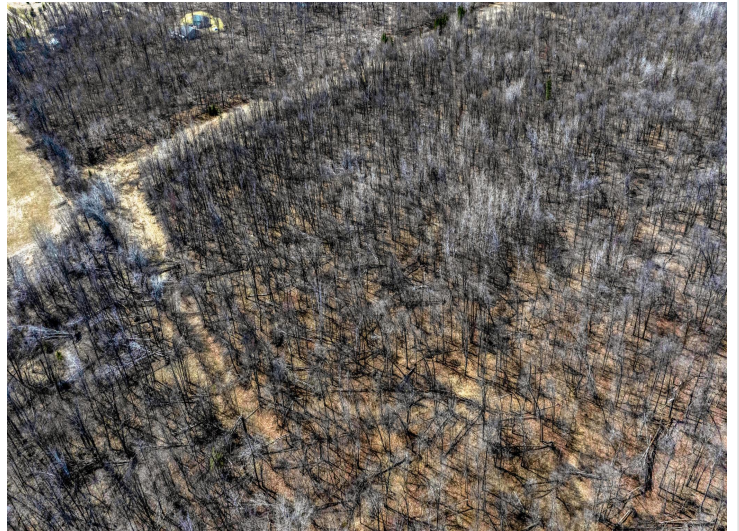
\$499,900
MLS 7050316 Residential
4850 Van Buren Avenue
Bemidji MN 56601



website: www.AffinityRealEstate.com | email: info@affinityrealestate.com | office: 218-237-3333 | fax:218-237-3377



\$499,900
MLS 7050316 Residential
4850 Van Buren Avenue
Bemidji MN 56601



website: www.AffinityRealEstate.com | email: info@affinityrealestate.com | office: 218-237-3333 | fax:218-237-3377

Affinity
REAL ESTATE INC

\$499,900
MLS 7050316 Residential
4850 Van Buren Avenue
Bemidji MN 56601



website: www.AffinityRealEstate.com | email: info@affinityrealestate.com | office: 218-237-3333 | fax:218-237-3377



\$499,900
MLS 7050316 Residential
4850 Van Buren Avenue
Bemidji MN 56601



website: www.AffinityRealEstate.com | email: info@affinityrealestate.com | office: 218-237-3333 | fax:218-237-3377



\$499,900
MLS 7050316 Residential
4850 Van Buren Avenue
Bemidji MN 56601



website: www.AffinityRealEstate.com | email: info@affinityrealestate.com | office: 218-237-3333 | fax: 218-237-3377

Affinity
REAL ESTATE INC

\$499,900
MLS 7050316 Residential
4850 Van Buren Avenue
Bemidji MN 56601



website: www.AffinityRealEstate.com | email: info@affinityrealestate.com | office: 218-237-3333 | fax:218-237-3377



\$499,900
MLS 7050316 Residential
4850 Van Buren Avenue
Bemidji MN 56601



website: www.AffinityRealEstate.com | email: info@affinityrealestate.com | office: 218-237-3333 | fax: 218-237-3377

Affinity
REAL ESTATE INC

\$499,900
MLS 7050316 Residential
4850 Van Buren Avenue
Bemidji MN 56601



website: www.AffinityRealEstate.com | email: info@affinityrealestate.com | office: 218-237-3333 | fax:218-237-3377



\$499,900
MLS 7050316 Residential
4850 Van Buren Avenue
Bemidji MN 56601