



MLS 7050394 Residential

**\$750,000**

2,176 sq ft  
2 bedrooms  
2 baths

46367 State Highway 210  
Vining MN 56588

Status: Active

**Description:**

This is a one of a kind property, situated on a park like setting, it boasts pride of ownership. Numerous opportunities exist for this property. Many large shop buildings and storage buildings could be used for business and storage units, with an asphalt driveway to home and buildings and a great location on state highway 210. Upon entering the home, the thoughtful design, an open feel, and large windows allowing for natural light and spectacular views will impress you. Attached to the home you'll appreciate an insulated and heated garage with workshop. A successful repair business was operated out of the main shop building for many years. Don't let this incredible opportunity slip by you.

**Additional Details:**


Year Built	1998
Lot Acres	13.31
Lot Dimensions	irregular
Garage Stalls	4
School District	1945
Taxes	\$4,924
Taxes with Assessments	\$4,924
Tax Year	2025

**Additional Features:**

**Basement:** Crawl Space **Fuel:** Array **Garage:** 4 **Heat:** Boiler, Forced Air, Wood Stove **Sewer:** Tank with Drainage Field **Water:** Private **Air Conditioning:** Central Air

**Driving Directions:**

While traveling on highway 210 head east through Vining, property is located 1 mile east of Vining on the north side of highway 210.

 Listed By:  
Weichert, Realtors - Paulson Land Co

Affinity Real Estate Inc. participates in the Regional Multiple Listing Service of Minnesota, Inc Broker Reciprocity (sm) program, allowing us to display other broker's listings on our website. All properties are subject to prior sale, change or withdrawal.

 **Call Affinity Real Estate**  
**218-237-3333**  
**info@affinityrealestate.com**

**Affinity Real Estate - 600 Park Avenue South - Park Rapids MN 56470**



website: [www.AffinityRealEstate.com](http://www.AffinityRealEstate.com) | email: [info@affinityrealestate.com](mailto:info@affinityrealestate.com) | office: 218-237-3333 | fax: 218-237-3377

**Affinity**  
REAL ESTATE INC

**\$750,000**  
MLS 7050394 Residential  
46367 State Highway 210  
Vining MN 56588



website: [www.AffinityRealEstate.com](http://www.AffinityRealEstate.com) | email: [info@affinityrealestate.com](mailto:info@affinityrealestate.com) | office: 218-237-3333 | fax:218-237-3377

**Affinity**  
REAL ESTATE INC

**\$750,000**  
MLS 7050394 Residential  
46367 State Highway 210  
Vining MN 56588



website: [www.AffinityRealEstate.com](http://www.AffinityRealEstate.com) | email: [info@affinityrealestate.com](mailto:info@affinityrealestate.com) | office: 218-237-3333 | fax: 218-237-3377

**Affinity**  
REAL ESTATE INC

**\$750,000**  
MLS 7050394 Residential  
46367 State Highway 210  
Vining MN 56588



website: [www.AffinityRealEstate.com](http://www.AffinityRealEstate.com) | email: [info@affinityrealestate.com](mailto:info@affinityrealestate.com) | office: 218-237-3333 | fax:218-237-3377

**Affinity**  
REAL ESTATE INC

**\$750,000**  
MLS 7050394 Residential  
46367 State Highway 210  
Vining MN 56588



website: [www.AffinityRealEstate.com](http://www.AffinityRealEstate.com) | email: [info@affinityrealestate.com](mailto:info@affinityrealestate.com) | office: 218-237-3333 | fax:218-237-3377



**\$750,000**  
MLS 7050394 Residential  
46367 State Highway 210  
Vining MN 56588



website: [www.AffinityRealEstate.com](http://www.AffinityRealEstate.com) | email: [info@affinityrealestate.com](mailto:info@affinityrealestate.com) | office: 218-237-3333 | fax:218-237-3377



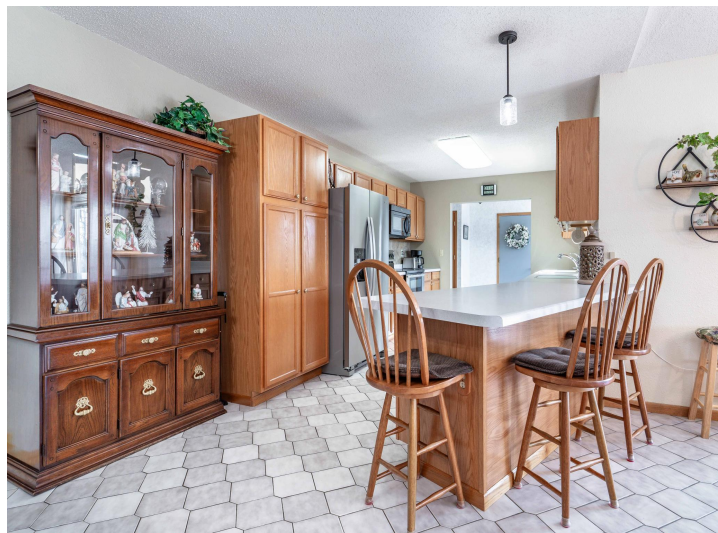
**\$750,000**  
MLS 7050394 Residential  
46367 State Highway 210  
Vining MN 56588



website: [www.AffinityRealEstate.com](http://www.AffinityRealEstate.com) | email: [info@affinityrealestate.com](mailto:info@affinityrealestate.com) | office: 218-237-3333 | fax:218-237-3377



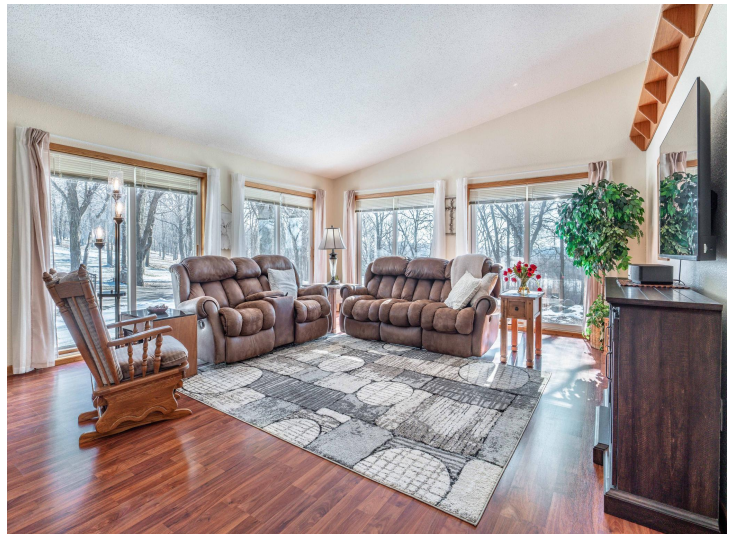
**\$750,000**  
MLS 7050394 Residential  
46367 State Highway 210  
Vining MN 56588



website: [www.AffinityRealEstate.com](http://www.AffinityRealEstate.com) | email: [info@affinityrealestate.com](mailto:info@affinityrealestate.com) | office: 218-237-3333 | fax: 218-237-3377

**Affinity**  
REAL ESTATE INC

**\$750,000**  
MLS 7050394 Residential  
46367 State Highway 210  
Vining MN 56588



website: [www.AffinityRealEstate.com](http://www.AffinityRealEstate.com) | email: [info@affinityrealestate.com](mailto:info@affinityrealestate.com) | office: 218-237-3333 | fax: 218-237-3377

**Affinity**  
REAL ESTATE INC

**\$750,000**  
MLS 7050394 Residential  
46367 State Highway 210  
Vining MN 56588



website: [www.AffinityRealEstate.com](http://www.AffinityRealEstate.com) | email: [info@affinityrealestate.com](mailto:info@affinityrealestate.com) | office: 218-237-3333 | fax:218-237-3377

**Affinity**  
REAL ESTATE INC

**\$750,000**  
MLS 7050394 Residential  
46367 State Highway 210  
Vining MN 56588



website: [www.AffinityRealEstate.com](http://www.AffinityRealEstate.com) | email: [info@affinityrealestate.com](mailto:info@affinityrealestate.com) | office: 218-237-3333 | fax: 218-237-3377

**Affinity**  
REAL ESTATE INC

**\$750,000**  
MLS 7050394 Residential  
46367 State Highway 210  
Vining MN 56588



website: [www.AffinityRealEstate.com](http://www.AffinityRealEstate.com) | email: [info@affinityrealestate.com](mailto:info@affinityrealestate.com) | office: 218-237-3333 | fax:218-237-3377

**Affinity**  
REAL ESTATE INC

**\$750,000**  
MLS 7050394 Residential  
46367 State Highway 210  
Vining MN 56588



website: [www.AffinityRealEstate.com](http://www.AffinityRealEstate.com) | email: [info@affinityrealestate.com](mailto:info@affinityrealestate.com) | office: 218-237-3333 | fax: 218-237-3377

**Affinity**  
REAL ESTATE INC

**\$750,000**  
MLS 7050394 Residential  
46367 State Highway 210  
Vining MN 56588



website: [www.AffinityRealEstate.com](http://www.AffinityRealEstate.com) | email: [info@affinityrealestate.com](mailto:info@affinityrealestate.com) | office: 218-237-3333 | fax: 218-237-3377

**Affinity**  
REAL ESTATE INC

**\$750,000**  
MLS 7050394 Residential  
46367 State Highway 210  
Vining MN 56588



website: [www.AffinityRealEstate.com](http://www.AffinityRealEstate.com) | email: [info@affinityrealestate.com](mailto:info@affinityrealestate.com) | office: 218-237-3333 | fax:218-237-3377

**Affinity**  
REAL ESTATE INC

**\$750,000**  
MLS 7050394 Residential  
46367 State Highway 210  
Vining MN 56588



website: [www.AffinityRealEstate.com](http://www.AffinityRealEstate.com) | email: [info@affinityrealestate.com](mailto:info@affinityrealestate.com) | office: 218-237-3333 | fax:218-237-3377

**Affinity**  
REAL ESTATE INC

**\$750,000**  
MLS 7050394 Residential  
46367 State Highway 210  
Vining MN 56588



website: [www.AffinityRealEstate.com](http://www.AffinityRealEstate.com) | email: [info@affinityrealestate.com](mailto:info@affinityrealestate.com) | office: 218-237-3333 | fax: 218-237-3377

**Affinity**  
REAL ESTATE INC

**\$750,000**  
MLS 7050394 Residential  
46367 State Highway 210  
Vining MN 56588



website: [www.AffinityRealEstate.com](http://www.AffinityRealEstate.com) | email: [info@affinityrealestate.com](mailto:info@affinityrealestate.com) | office: 218-237-3333 | fax:218-237-3377



**\$750,000**  
MLS 7050394 Residential  
46367 State Highway 210  
Vining MN 56588



website: [www.AffinityRealEstate.com](http://www.AffinityRealEstate.com) | email: [info@affinityrealestate.com](mailto:info@affinityrealestate.com) | office: 218-237-3333 | fax:218-237-3377



**\$750,000**  
MLS 7050394 Residential  
46367 State Highway 210  
Vining MN 56588